

Indiana Collegiate Action Network

Results of the
**Indiana College
Substance Use Survey**
2010



Results of the Indiana College Substance Use Survey 2010

by

Rosemary King, M.P.H.
Mi Kyung Jun, Ph.D.

Indiana Prevention Resource Center
501 N. Morton St., Suite 110
Bloomington, Indiana 47404
www.drugs.indiana.edu

Online survey and report cover designed by Junghun Lee, M.S.
Paper survey designed by Roger Morris, M.S., M.I.S.

Funded by the Indiana Family and Social Services Administration,
Division of Mental Health and Addiction
through a contract with the Indiana Collegiate Action Network

TABLE OF CONTENTS

| | |
|--|----|
| List of Tables and Figures..... | ii |
| Introduction..... | 1 |
| Methodology | 3 |
| Key Findings..... | 5 |
| Annual Prevalence | 8 |
| Monthly Prevalence..... | 9 |
| Binge Drinking..... | 10 |
| Consequences..... | 11 |
| Risk Factors..... | 13 |
| Age of First Time Use..... | 16 |
| Alcohol Selection and Availability..... | 17 |
| Perception of Peer Behaviors | 20 |
| Gambling Behaviors..... | 21 |
| Characteristics of Survey Participants | 24 |
| References..... | 26 |
| Frequency Tables..... | 28 |

LIST OF TABLES AND FIGURES

| | |
|--|----|
| Table 1. Select demographic characteristics of survey respondents, 2009 & 2010 | 2 |
| Table 2. Response rate..... | 4 |
| Table 3. Number of usable surveys | 4 |
| Table 4. Percentage of students reporting use of select substances in past year..... | 8 |
| Table 5. Percentage of students reporting use of select substances in past month. | 9 |
| Table 6. Percentage of students reporting binge drinking in the past two weeks. | 10 |
| Figure 1. Number of times students reported binge drinking in the past two weeks..... | 10 |
| Table 7. Percentage of students reporting select consequences as a result of their drinking. | 11 |
| Table 8. Percentage of students reporting select consequences as a result of their drug use. | 12 |
| Table 9. Average age of first time use of select substances. | 16 |
| Table 10. Three easiest ways of getting alcohol by underage students. | 17 |
| Figure 2. Percentage of students under 21 who reported purchasing alcohol. | 17 |
| Figure 3. Methods used by underage students to purchase alcohol..... | 18 |
| Figure 4. Places where underage students purchase alcohol..... | 18 |
| Figure 5. Usual type of alcohol students drank in past month. | 19 |
| Table 11. Perception of mean number of drinks the typical student consumes. | 20 |
| Table 12. Perception of other students' approval/disapproval of select behaviors..... | 20 |
| Table 13. Percentage of students reporting gambling experiences in past year..... | 22 |
| Figure 6. Percentage of students who reported weekly or more frequent gambling behavior..... | 23 |
| Table 14. Percentage of students reporting select consequences as a result of their gambling. | 23 |
| Table 15. Demographic characteristics of survey participants | 24 |

INTRODUCTION

Substance use by college students has long been recognized as a serious problem on our nation's campuses, with alcohol being the most widely used substance. In 1998, the National Institute on Alcohol Abuse and Alcoholism undertook a comprehensive assessment of drinking on college campuses, concluding that social and environmental influences present on most campuses have created a culture of drinking, where alcohol consumption has become a rite of passage. Drinking to excess (binge drinking) is widespread among college students, and has serious consequences (NIAAA, 2002). The rates of alcohol and drug use have remained relatively steady over the past decade, with approximately 80% of college students nationwide using alcohol in the past year and approximately one-third using illicit drugs (Johnston et al., 2010).

In 2006, the Indiana Collegiate Action Network (ICAN) provided funding for the first uniform assessment of substance use across institutions of higher education in Indiana, utilizing the Core Alcohol and Drug Survey. Beginning in 2008, the Indiana Division of Mental Health and Addiction (DMHA) has awarded funding to ICAN to continue the statewide collection and analysis of data on the prevalence of substance use by Indiana college students. ICAN, in conjunction with the Indiana Prevention Resource Center (IPRC) developed a new survey instrument in 2009, called the Indiana College Substance Use Survey, to collect information on items of interest to Indiana colleges.

This report summarizes the findings of the second annual Indiana College Substance Use Survey that was conducted by the Indiana Prevention Resource Center in the spring of 2010. Findings on the prevalence of alcohol, tobacco and other drug use, consequences of use, alcohol availability, and student perceptions of peer behaviors are presented. The findings have been analyzed across gender and age variables. National prevalence data from the Monitoring the Future Study have been included to facilitate comparison between the participating Indiana college students and the national rates, where available. The Monitoring the Future data is the most recent national data (2009) on college students' prevalence rates of substance use available at the time of this report.

Results from the 2009 Indiana College Substance Use Survey are not presented in this report because the participating schools were largely different between the two years. The small number of schools participating in the survey and the absence of a random sampling technique make it unsuitable to generalize the findings to Indiana college students overall. Therefore, the data should not be compared to identify any trends in behaviors over time. The following table compares some of the demographic characteristics of the survey participants in 2009 and 2010. There were higher percentages of females and students 21 or older in the 2010 respondents, with smaller percentages of

full-time students and students living on campus this year. The 2009 report can be found at www.drugs.indiana.edu/data-survey_icsus.html for those interested in last year's results.

Table 1. Select demographic characteristics of 2009 and 2010 survey respondents.

| | 2009 | 2010 |
|------------------------------|-------|-------|
| | % | % |
| Gender | | |
| Male | 42.9 | 36.8 |
| Female | 57.1 | 63.2 |
| Age | | |
| Under 21 | 53.4 | 46.1 |
| 21 or older | 46.6 | 53.8 |
| Race | | |
| White | 86.9 | 87.9 |
| Black/African American | 2.3 | 3.7 |
| Asian | 3.7 | 2.6 |
| Other | 6.4 | 5.2 |
| Ethnicity | | |
| Hispanic | 5.5 | 3.2 |
| Student status | | |
| Full-time | 95.6 | 89.5 |
| Location of residence | | |
| On-campus | 61.9 | 50.3 |
| # of usable surveys | 4,885 | 5,928 |

METHODOLOGY

The Indiana College Substance Use Survey was developed in 2009 by the Indiana Collegiate Action Network (ICAN) and the Indiana Prevention Resource Center (IPRC), with input from Indiana institutions of higher education and the Indiana State Epidemiology and Outcomes Workgroup. The survey was developed to assess substance use and consequences, as well as variables identified in the research literature as associated with use (availability, peer attitudes and norms, and age of first use). Survey items were adapted from several sources, including the Core Alcohol and Drug Survey (Core Institute, Southern Illinois University - Carbondale), the National College Health Assessment II (American College Health Association), and the Monitoring the Future Survey (Institute for Social Research, University of Michigan). In 2010, two questions on gambling behavior were added to the Indiana survey to assess both the level of gambling among college students and negative consequences experienced by the students. The questions were taken from the Minnesota Student Survey (Stinchfield, Kushner, & Winters, 2005; Winters & Anderson, 2000), and used with the permission of the Minnesota Department of Education.

All two- and four-year colleges in Indiana were invited to participate in the survey. Thirteen colleges participated in the 2010 survey, including twelve four-year colleges and one two-year college. Participating schools could choose from either an online or paper format, with all schools but one using the online version. Students were surveyed either before spring break or at least one month after spring break. The period immediately following spring break was avoided because of the historically higher rates of use during that time. For the online version, students were surveyed during a two-week period. They received an e-mail invitation which included a link to the survey website, and a reminder e-mail midway through the survey period. Incentives were offered by some schools to improve participation rates (e.g., cash, gift cards, etc.).

Selection of students was determined by the participating school. Eight schools chose to survey an entire population of the student body; e.g. all students, all undergraduate students, all full-time students, etc. Four schools chose a random sampling of students. Participation in the survey was voluntary and anonymous. The survey procedures were reviewed by the Indiana University-Bloomington Institutional Review Board to ensure protection of participants as required by federal Human Subjects regulations.

A total of 63,332 students were invited to participate in the 2010 Indiana College Substance Use Survey, including 62,847 using the online format and 485 using paper surveys. A total of 6,524 students responded to the survey, for a response rate of 10.3%. The overall response rate was skewed by one school that invited all students who had registered for a class in the last two years

(over 40,000) with only 2.2% of them responding. All other schools had response rates between 13.1% and 54.4%.

Table 2. Response rate

| Number of students invited to participate | Number of respondents | Response Rate |
|---|-----------------------|---------------|
| 63,332 | 6,524 | 10.3% |

Three criteria were used to clean the data. Surveys were discarded if any of the following conditions were met:

- gender information missing,
- inconsistent responses on substance use across time measures (monthly vs. annually) for more than one-third of the substances queried, and
- patterns of responses were pharmacologically implausible (i.e., a combination of drugs and frequencies of use whose cumulative effect would be lethal).

A total of 596 surveys were rejected due to meeting at least one of the criteria, leaving 5,928 usable surveys (90.9%).

Table 3. Number of usable surveys

| | Frequency | Percent |
|---------------------------------------|--------------|-------------|
| No gender reported | 482 | 7.4 |
| Surveys rejected due to error check | 114 | 1.7 |
| Total number of usable surveys | 5,928 | 90.9 |
| Total | 6,524 | 100.0 |

KEY FINDINGS

PREVALENCE OF USE WITHIN THE PAST YEAR

Nearly three-fourths of the Indiana college students who participated in the 2010 Indiana College Substance Use Survey (73%) reported drinking alcohol in the past year, including two-thirds of the students under 21 years of age (66%). These rates indicate the pervasiveness and widespread use of alcohol among the college students participating in the survey. Additionally, almost three in ten (28%) reported using cigarettes, and approximately one-fourth (22%) used marijuana. Marijuana is the most widely used illicit drug, followed by use of prescription medication not prescribed to the student (10%). Annual prevalence rates for all substances investigated are provided in Table 4.

Male students used almost all substances at significantly higher rates than females during the past year, including tobacco, marijuana, cocaine, hallucinogens and misuse of prescription medication. Twenty-seven percent of the male students had used marijuana in the past year, compared to 19% of the female students. One in eight male students (13%) reported taking prescription medications not prescribed to them, compared to one in eleven female students (9%). The rates of alcohol use were nearly identical for both genders.

While students 21 or older were more likely to report alcohol use in the past year (79% vs. 66%), the younger students reported significantly higher rates of marijuana use (25% vs. 20%). Use of tobacco products also varied by age, with students 21 or older reporting significantly higher rates of cigarette use while younger students reported higher rates of all other forms of tobacco use.

PREVALENCE OF USE WITHIN THE PAST MONTH

Two-thirds of the Indiana students (66%) drank alcohol in the past month, including over half of the underage students (57%). One in five of the students (20%) smoked cigarettes in the past month, and 15% reported marijuana use over the same period. Following alcohol, tobacco and marijuana, misuse of prescription medication was the next most widely used substance by the students, with 6% reporting taking prescription medication not prescribed to them (Table 5).

As with the annual prevalence rates, the male college students reported statistically higher rates of use within the past month for nearly every substance investigated on the survey. Almost one in five male students (18%) reported using marijuana in the past month compared to 13% of the female students. Males used all forms of tobacco at significantly greater rates, with 22% smoking cigarettes, 21% smoking cigars, 14% using a water pipe, and 12% using smokeless tobacco. Almost one-fifth of the females (19%) smoked cigarettes and one in ten (10%) smoked tobacco with a water

pipe. Again, rates of alcohol use in the past month were not significantly different between the genders.

Parallel variations by students' age were observed between the annual and monthly use of substances, with students 21 or older reporting higher rates of alcohol use in the past month (73% vs. 57%), but younger students reporting higher rates of marijuana use (17% vs. 13%). Use of tobacco products in the past month also mirrored the annual prevalence findings, with students 21 or older reporting significantly higher rates of cigarette use while younger students reported higher rates of all other forms of tobacco use.

PREVALENCE OF BINGE DRINKING

Binge drinking was defined in the Indiana College Substance Use Survey as four or more drinks in one sitting for females and five or more drinks in one sitting for males. This gender-specific standard follows the definition established by the National Institute on Alcohol Abuse and Alcoholism (NIAAA, 2004). As a group, college students are significantly and substantially more likely to binge drink than non-college peers (Johnston et al., 2009). Students who binge drink experience significantly more adverse consequences than those who do not. One study found that college students who binge drank occasionally were five times more likely to experience five or more alcohol-related problems compared to students who did not binge drink. Students who were frequent binge drinkers (binge drinking three or more times in the past two weeks) were 4 to 15 times more likely to experience a particular problem than non-binge drinkers (Wechsler et al., 2000b).

In Indiana, over one-third of the students surveyed (37%) reported binge drinking in the past two weeks, with 43% of the male students reporting the behavior and 33% of the female students. There was no statistically significant difference between the percentage of students under 21 who reported binge drinking compared to those 21 or older (Table 6). Over one in five of the students (21%) reported binge drinking once or twice in the past two weeks, and one in six (16%) reported binge drinking three or more times in the same period (Figure 1).

PREVALENCE OF ADVERSE CONSEQUENCES FROM SUBSTANCE USE

Consequences resulting from alcohol use include violence, unintentional injuries, risky sexual behavior, diminished academic performance and use of other drugs. Many times the negative consequences from college students' alcohol use affect not only the individuals consuming the alcohol but those around them as well (NIAAA, 2004/2005; Wechsler & Nelson, 2008). Researchers estimated that alcohol-related problems experienced by 18-24 year old U.S. college students in 2001 included 1,700 student deaths from alcohol-related injuries and approximately 599,000 unintentional injuries

while under the influence of alcohol. The researchers estimated the level of violence associated with alcohol use by college students to be approximately 696,000 students assaulted by other students who had been drinking, including 97,000 sexual assaults (Hingson et al., 2005).

The Indiana College Substance Use Survey asked students to indicate the number of times they experienced select consequences due to their drinking or drug use. Students reported alarming levels of adverse consequences as a result of their drinking. Over one-fourth of the students who drank within the past six months (26%) reported blacking out (forgetting where they were or what they did) and one in five (20%) had driven a car while under the influence. One in seven of the students (14%) reported engaging in risky sexual behavior and one in nine (11%) had experienced unwanted sexual attention. The impact of drinking on academic performance was also confirmed by the survey participants, with 16% of the students who drank alcohol in the past six months reporting missing classes or assignments as a result of their drinking. Over one-fourth of the students who drank alcohol in the past six months (27%) reported feeling bad about their drinking.

Approximately one-quarter of the students surveyed reported the following consequences as a result of their drug use: driving a car while under the influence (25%), feeling bad/guilty about their use (26%), and abusing more than one drug at a time (25%). Ten percent of the students said they missed class or an assignment due to their drug use.

ANNUAL PREVALENCE

Table 4. Percentage of students reporting use of select substances in past year

| Substance | All Students | | By Gender | | By Age | |
|--|--------------|-------------------|-----------|----------|----------|------------|
| | Indiana | U.S. ¹ | Males | Females | Under 21 | 21 or Over |
| Cigarettes | 27.6 | 30.0 | 29.3 | 26.7 * | 24.5 | 30.4 *** |
| Cigars | 20.6 | | 35.9 | 11.8 *** | 24.4 | 17.4 *** |
| Chewing/smokeless tobacco | 8.1 | | 17.0 | 3.0 *** | 9.3 | 7.2 ** |
| Smoking tobacco with hookah/water pipe | 22.9 | | 26.3 | 20.9 *** | 27.6 | 18.8 *** |
| Alcohol | 72.9 | 82.1 | 72.8 | 72.9 | 65.7 | 79.0 *** |
| Marijuana | 22.0 | 32.3 | 26.8 | 19.2 *** | 24.5 | 19.9 *** |
| Cocaine | 3.1 | 4.4 | 4.0 | 2.5 ** | 2.6 | 3.4 |
| Hallucinogens | 3.8 | 5.1 | 5.6 | 2.7 *** | 3.8 | 3.7 |
| Opiates | 2.1 | | 2.4 | 1.9 | 2.2 | 2.0 |
| Designer drugs | 3.1 | | 3.9 | 2.7 ** | 3.5 | 2.8 |
| Inhalants | 1.9 | 1.1 | 2.2 | 1.8 | 2.0 | 1.9 |
| Steroids | 1.9 | | 2.0 | 1.8 | 1.8 | 2.0 |
| Other illegal drugs | 3.0 | | 4.0 | 2.4 *** | 3.1 | 2.9 |
| Prescription pills not prescribed to student | 10.4 | | 12.8 | 9.1 *** | 10.0 | 10.9 |
| Prescription medicines to get high | 4.9 | | 6.4 | 4.1 *** | 5.2 | 4.7 |
| Over-the-counter medications to get high | 2.9 | | 3.4 | 2.6 | 3.7 | 2.2 *** |
| Methamphetamine | 1.7 | 0.5 | 1.7 | 1.6 | 1.6 | 1.8 |

Note: Statistically significant difference at: * p < .05, ** p < .01, *** p < .001

¹National data is from the 2009 Monitoring the Future survey, Johnston et al., 2010.

MONTHLY PREVALENCE

Table 5. Percentage of students reporting use of select substances in past month

| Substance | All Students | | By Gender | | By Age | |
|--|--------------|-------------------|-----------|---------|----------|------------|
| | Indiana | U.S. ¹ | Males | Females | Under 21 | 21 or Over |
| Cigarettes | 20.4 | 17.9 | 22.4 | 19.3 | 17.3 | 23.1 |
| Cigars | 10.9 | | 20.5 | 5.4 | 12.8 | 9.4 |
| Chewing/smokeless tobacco | 4.9 | | 11.5 | 1.1 | 5.9 | 4.1 |
| Smoking tobacco with hookah/water pipe | 11.4 | | 14.3 | 9.7 | 14.4 | 8.8 |
| Alcohol | 65.7 | 69.0 | 66.7 | 65.0 | 57.4 | 72.7 |
| Marijuana | 14.6 | 17.0 | 18.2 | 12.5 | 16.7 | 12.8 |
| Cocaine | 0.9 | 1.2 | 1.5 | 0.5 | 0.7 | 1.0 |
| Hallucinogens | 0.9 | 1.7 | 1.7 | 0.5 | 1.2 | 0.8 |
| Opiates | 0.4 | | 0.6 | 0.3 | 0.5 | 0.3 |
| Designer drugs | 0.6 | | 1.1 | 0.3 | 0.7 | 0.5 |
| Inhalants | 0.3 | 0.4 | 0.4 | 0.2 | 0.4 | 0.2 |
| Steroids | 0.3 | | 0.5 | 0.3 | 0.3 | 0.4 |
| Other illegal drugs | 0.8 | | 1.3 | 0.5 | 0.8 | 0.7 |
| Prescription pills not prescribed to student | 6.1 | | 7.5 | 5.3 | 6.0 | 6.2 |
| Prescription medicines to get high | 2.2 | | 2.7 | 1.9 | 2.5 | 1.9 |
| Over-the-counter medications to get high | 0.8 | | 1.1 | 0.6 | 1.2 | 0.3 |
| Methamphetamine | 0.2 | 0.0 | 0.3 | 0.2 | 0.3 | 0.2 |

Note: Statistically significant difference at: * p < .05, ** p < .01, *** p < .001

¹National data is from the 2009 Monitoring the Future survey, Johnston et al., 2010.

BINGE DRINKING

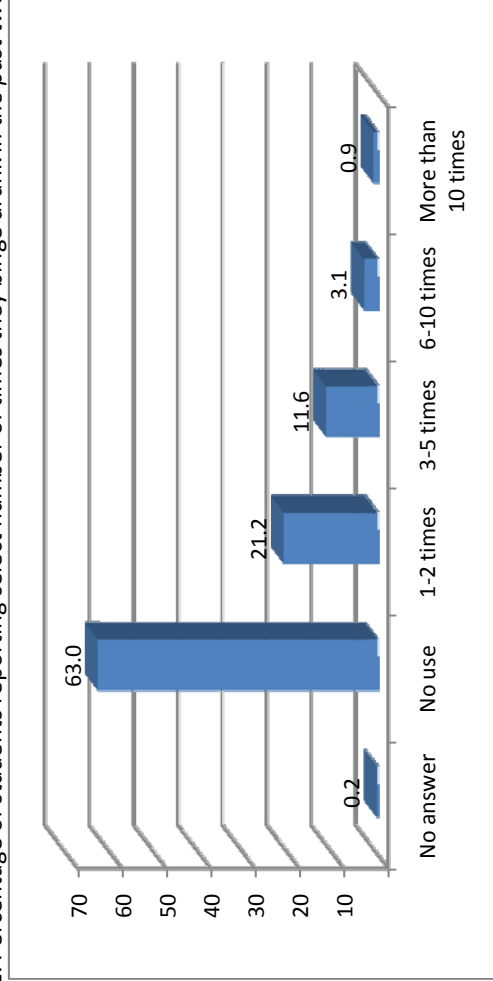
Table 6. Percentage of students reporting binge drinking in the past two weeks

| | By Gender | | By Age | |
|-------------------|-----------|---------|----------|------------|
| | Males | Females | Under 21 | 21 or Over |
| All Students | | | | |
| U.S. ¹ | 43.4 | 32.9 | 36.1 | 37.3 |
| Indiana | 36.8 | 40.0 | 32.9 | 37.3 |

Note: Statistically significant difference at: ***p < .001

¹National data is from the 2009 Monitoring the Future survey, Johnston et al., 2010.

Figure 1. Percentage of students reporting select number of times they binge drank in the past two weeks



CONSEQUENCES

Table 7. Percentage of students *who drank alcohol in past 6 months*, who reported select consequences as a result of their drinking (n = 4,466)

| Consequence | % |
|--|------|
| Spouse/partner or parents worried or complained about your drinking | 13.5 |
| Felt bad about your drinking | 27.2 |
| Been unable to stop drinking when you wanted to | 10.0 |
| Attended Alcoholics Anonymous | 1.0 |
| Created problems between you and your spouse/partner | 11.8 |
| Got into trouble at work or school because of drinking | 5.1 |
| Neglected your obligations, your family, or your work for 2 or more days in a row because you were drinking | 4.4 |
| Gone to anyone for help to reduce your drinking or your potential problems due to drinking | 1.9 |
| Been in the hospital because of drinking | 0.8 |
| Been arrested even for a few hours because of drinking | 2.4 |
| Been arrested for drunk driving or driving after drinking | 1.2 |
| Driven a car while under the influence | 20.4 |
| Got into physical fights when drinking | 5.8 |
| Experienced unwanted sexual attention such as being touched when you don't want to be, forced kissing, etc. | 11.2 |
| Engaged in risky sexual behavior such as having unprotected sex or sex with someone you just met because you were drinking | 13.9 |
| Missed class or assignments | 16.3 |
| Forgot where you were or what you did (blacked out) | 26.3 |

Table 8. Percentage of students *who used drugs in past year*, who reported select consequences as a result of their drug use (n = 1,997)

| Consequence | % |
|---|------|
| Abused more than one drug at a time | 25.1 |
| Been unable to stop using drugs when you wanted to | 9.0 |
| Ever had blackouts or flashbacks as a result of drug use | 9.8 |
| Ever felt bad or guilty about your drug use | 26.0 |
| Had your spouse/partner complain about your involvement with drugs | 9.5 |
| Neglected your family because of your use of drugs | 4.8 |
| Engaged in illegal activities in order to obtain drugs | 6.8 |
| Gotten into physical fights because you were using drugs | 1.8 |
| Ever experienced withdrawal symptoms (felt sick) when you stopped taking drugs | 8.1 |
| Had medical problems as a result of your drug use (e.g. memory loss, infections, convulsions, bleeding) | 4.2 |
| Driven a car while under the influence of drugs | 24.8 |
| Gotten in trouble at work because of drug use | 1.8 |
| Been in very vulnerable situations, such as a situation in which you could have been hurt and/or date raped when using drugs | 5.2 |
| Engaged in risky sexual behavior such as having unprotected sex or sex with someone you just met because you were using drugs | 6.5 |
| Failed a class because of drug use | 1.6 |
| Missed class or assignments due to drug use | 10.1 |

RISK FACTORS

AGE OF FIRST USE

Early onset of substance use has been correlated with the development of a range of substance-related problems, including involvement in motor vehicle crashes, unintentional injuries, and alcohol and/or drug dependence. (Behrendt et al., 2009; Dawson et al, 2008; Hingson et al, 2006; Hingson & Wenxing, 2009; Warner & White, 2003) Individuals who begin drinking in their mid-teens are four times more likely to become alcohol dependent during their lifetime compared to those who do not drink before the age of 21 (Grant & Dawson 1998). The Indiana College Substance Use Survey asked students how old they were when they first used select substances. Responses consisted of two-year intervals for ages 10 through 17 (i.e., 10-11 years, 12-13 years, etc.), a three-year interval for students aged 18 through 20, a four-year interval for ages 21 through 25, and open-ended ranges for extreme responses (“under 10” or “26+”). The mean age of first use was calculated using the midpoints of the intervals and the upper and lower endpoints for the extreme responses.

The mean age of first time use of inhalants was the lowest of all substances investigated, at 15.5 years, followed by cigarettes (16.3 years). Over-the-counter medication misuse had the third-lowest average age of first time use at 16.8 years. Students reported identical average ages for initiation of alcohol and marijuana use, at 17.1 years (Table 9). The only significant differences in average age of first time use between genders were for alcohol and cigar use. Female students initiated use of alcohol at an average age of 17.1 years compared to a slightly younger average age of 16.9 reported by males.

AVAILABILITY

College students’ access to alcohol is strongly correlated with increased levels of drinking (Wechsler et al., 2000a). Students under 21 routinely report that alcohol is easy to obtain from a variety of sources (Brown et al., 2009; Fabian et al., 2008; Wechsler et al., 2002). To help understand how underage students are getting alcohol, the Indiana survey asked underage students who used alcohol in the past year to identify the three easiest ways they obtain it. Over half of the students (56%) reported that older friends were the easiest way to get alcohol, and almost three-fourths of the students (74%) listed older friends as one of the top two ways. Off-campus private parties was the most common response for both the second and third easiest method for obtaining alcohol. Over half of the survey respondents (56%) selected off-campus private parties as one of the top three easiest ways to access alcohol (Table 10). These data highlight the substantial role that older friends and

acquaintances play in how underage students obtain alcohol, and underscore the importance of targeting this group when trying to reduce underage students' access to alcohol.

Students under 21 were asked if they had ever bought alcohol themselves, with 11% reporting that they had. Of those, over half (58%) were able to purchase it without an ID, while 22% reported using someone else's ID and 16% used a fake ID (Figure 3). Figure 4 illustrates the locations underage students listed as the easiest place to purchase alcohol, with liquor stores and bars being selected most often. All students who drank alcohol in the past month (regardless of age) were asked what type of alcohol they usually drink. Liquor was the most common alcoholic beverage consumed by students (28%), followed closely by beer (24%) (Figure 5).

PEER PERCEPTIONS

Many college students overestimate both the amount of drinking and drug use, and the approval of use by their peers (Borsari & Carey, 2003; Martens et al., 2006). These misperceptions have been shown to be positively correlated with the student's own drinking and drug use levels. Students who believe their peers drink or use drugs are more likely to drink or use drugs themselves (Kilmer et al., 2006; Neighbors et al 2007; Perkins et al., 2005). The Indiana College Substance Use Survey asked students how many alcoholic drinks they thought the typical student at their school had the last time he or she partied/socialized. Students could provide any figure between 0 – 99. The average of the responses was 5.9 drinks, with the average estimate by males being 5.8 drinks and females averaging an estimate of 6.0 drinks. Responses did not differ between students by age categories (under 21 vs. 21 or older) with both groups averaging an estimate of 5.9 drinks consumed by the typical student at his/her last party/socialization. All of these averages are above the threshold for binge drinking, indicating that on average survey respondents thought the typical student binge drank the last time he or she partied. However, the students responses on their own binge drinking indicate that just over one-third (37%) actually binge drank in the past two weeks. This discrepancy between the percentage of students reporting binge drinking and the average perception of the "typical" student as having binge drank suggests that the students surveyed do indeed overestimate the amount of drinking by their peers (Table 11).

The survey also asked participants how they thought other students on their campus felt about using certain substances. Less than half of the students (46%) thought their peers would disapprove (somewhat or strongly) of having five or more drinks in one sitting, and only one-third (33%) thought their peers would disapprove of taking one or two drinks nearly every day. Less than one-fourth of the students (22%) thought their peers would disapprove of trying marijuana once or twice, one-third (34%) felt their peers would disapprove of smoking it occasionally and just over half

(57%) thought their peers would disapprove of smoking marijuana regularly. Approximately three-fourths of the students thought their peers would disapprove of trying cocaine, LSD or amphetamines once or twice, while more than eight out of ten thought their peers would disapprove of regular use of those substances (Table 12).

AGE OF FIRST TIME USE

Table 9. Average age of first time use of select substances

| Substance | All Students | | By Gender | | By Age | |
|--|--------------|-------|-----------|----------|------------|--|
| | Indiana | Males | Females | Under 21 | 21 or Over | |
| Cigarettes | 16.3 | 16.3 | 16.2 | 16.4 | 16.2 | |
| Cigars | 17.9 | 17.7 | 18.1 ** | 17.3 | 18.3 *** | |
| Chewing/smokeless tobacco | 17.2 | 17.2 | 17.4 | 17.1 | 17.3 | |
| Smoking tobacco with hookah/water pipe | 18.5 | 18.4 | 18.5 | 18.0 | 19.0 *** | |
| Alcohol | 17.1 | 16.9 | 17.1 * | 16.5 | 17.4 *** | |
| Marijuana | 17.1 | 17.1 | 17.1 | 16.9 | 17.2 ** | |
| Cocaine | 18.9 | 19.1 | 18.7 | 17.3 | 19.3 *** | |
| Hallucinogens | 17.9 | 18.1 | 17.7 | 17.4 | 18.0 ** | |
| Opiates | 18.3 | 17.9 | 18.7 | 17.0 | 18.8 *** | |
| Designer drugs | 18.9 | 18.9 | 18.8 | 17.9 | 19.3 *** | |
| Inhalants | 15.5 | 15.7 | 15.3 | 15.5 | 15.5 | |
| Steroids | 18.9 | 19.1 | 18.6 | 17.6 | 19.3 | |
| Other illegal drugs | 17.8 | 18.0 | 17.6 | 17.2 | 18.1 * | |
| Prescription pills not prescribed to student | 18.0 | 18.0 | 18.0 | 16.9 | 18.6 *** | |
| Prescription medicines to get high | 17.6 | 17.9 | 17.3 | 16.7 | 18.1 *** | |
| Over-the-counter medications to get high | 16.8 | 17.1 | 16.5 | 16.4 | 17.0 | |
| Methamphetamine | 18.7 | 19.2 | 18.2 | 15.5 | 19.2 ** | |

Note: Statistically significant difference at: * p < .05, ** p < .01, *** p < .001

¹ Average age was calculated using the mid-points of the age ranges that were provided as responses.

ALCOHOL SELECTION AND AVAILABILITY

Table 10. Three easiest ways of getting alcohol as reported by students who are under 21 and who used alcohol during the past year (n = 1,850)¹

| | Most common response | 2 nd most common response | 3 rd most common response |
|-----------------------|------------------------------------|--------------------------------------|---------------------------------------|
| First Easiest | Older friends (55.5%) | Off-campus private parties (10.5%) | Fraternity or sorority houses (10.1%) |
| Second Easiest | Off-campus private parties (26.3%) | Older friends (18.4%) | On-campus parties (14.3%) |
| Third Easiest | Off-campus private parties (19.3%) | Someone else on campus (17.8%) | On-campus parties (13.9%) |

¹Students were asked to identify the first, second, and third easiest ways that they obtain alcohol. The top three responses in each category are reported in the table.

Figure 2. Percentage of students under 21 who reported ever purchasing alcohol from a retailer (n = 2,735)

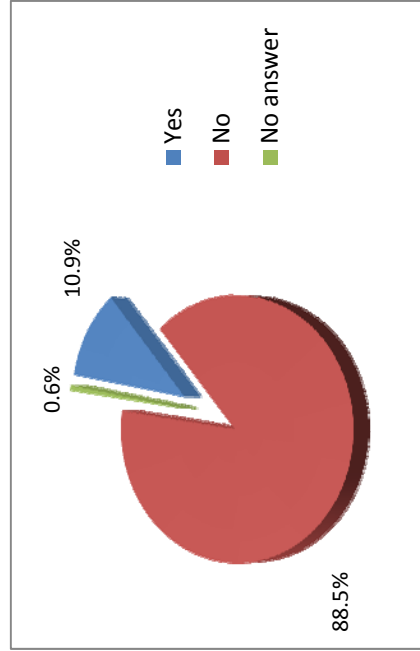


Figure 3. Percentage of students under 21 who reported purchasing alcohol by select methods (n=298)

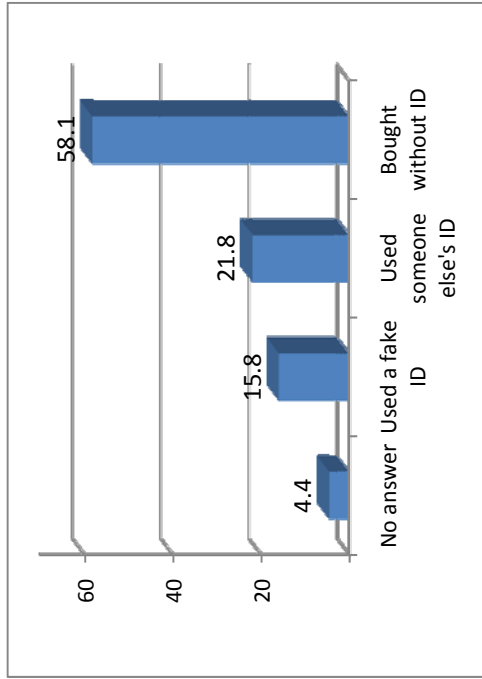


Figure 4. Percentage of students under 21 who reported purchasing alcohol by select locations as the easiest place to purchase alcohol (n=298)

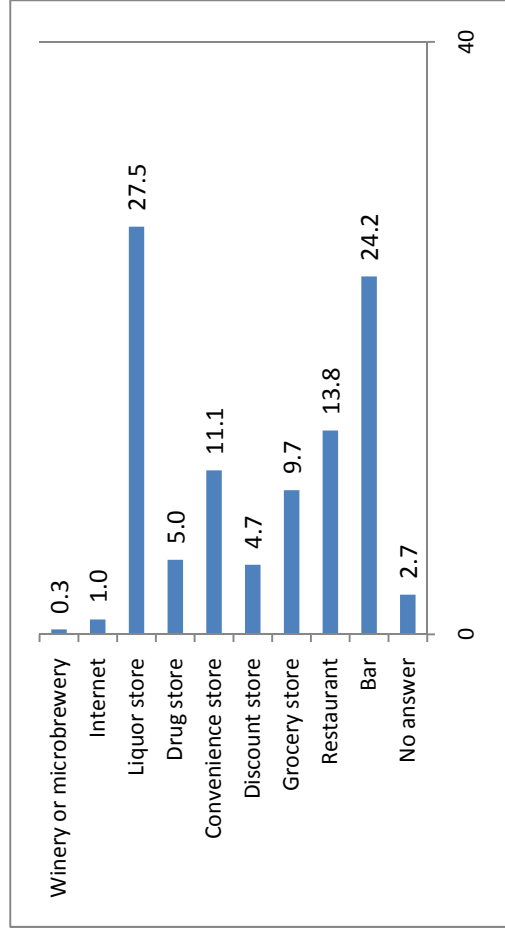
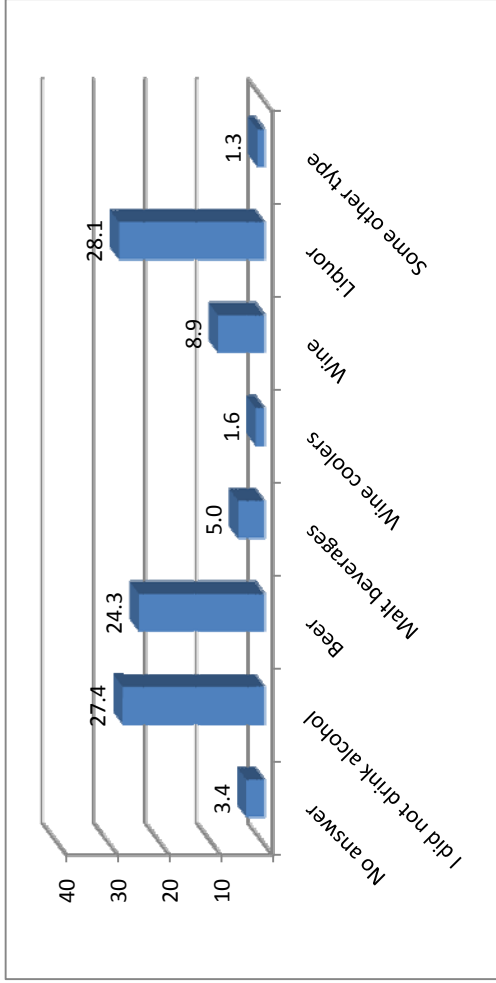


Figure 5. Percentage of students (all ages) who reported select categories as the usual type of alcohol they drank in the past month



PERCEPTION OF PEER BEHAVIORS

Table 11. Mean number of drinks respondents thought the typical student consumed the last time he/she “partied/socialized” (range = 0 – 99)

| | All Students | | By Gender | | By Age | |
|--------------------|--------------|--|-----------|---------|----------|------------|
| | Indiana | | Males | Females | Under 21 | 21 or Over |
| Mean | 5.9 | | 5.8 | 6.0 | 5.9 | 5.9 |
| Standard Deviation | 7.8 | | 7.7 | 7.9 | 7.3 | 8.2 |

Table 12. Percentage of students who thought other students on campus would approve/disapprove of select behaviors

| | Strongly approve | Somewhat approve | Neither approve or disapprove | Somewhat disapprove | Strongly disapprove | No answer |
|--|------------------|------------------|-------------------------------|---------------------|---------------------|-----------|
| Trying marijuana once or twice | 13.5 | 34.8 | 28.1 | 12.0 | 10.3 | 1.3 |
| Smoking marijuana occasionally | 7.2 | 28.6 | 29.1 | 18.9 | 14.8 | 1.4 |
| Smoking marijuana regularly | 3.5 | 12.9 | 24.8 | 29.0 | 28.2 | 1.5 |
| Trying cocaine once or twice | 1.2 | 6.2 | 16.4 | 28.8 | 46.0 | 1.4 |
| Taking cocaine regularly | 0.8 | 1.5 | 10.5 | 15.0 | 70.6 | 1.6 |
| Trying LSD once or twice | 1.4 | 5.9 | 16.6 | 25.2 | 49.4 | 1.5 |
| Taking LSD regularly | 1.0 | 1.4 | 10.9 | 14.7 | 70.5 | 1.6 |
| Trying amphetamine once or twice | 1.5 | 5.5 | 16.6 | 23.0 | 51.8 | 1.6 |
| Taking amphetamine regularly | 1.1 | 2.1 | 12.1 | 14.7 | 67.6 | 2.4 |
| Taking one or two drinks of an alcoholic beverage nearly every day | 11.3 | 23.1 | 30.8 | 19.9 | 13.3 | 1.5 |
| Taking three or four drinks nearly every day | 4.6 | 12.8 | 23.6 | 26.4 | 31.0 | 1.6 |
| Having five or more drinks in one sitting | 9.1 | 17.1 | 26.2 | 18.4 | 27.6 | 1.7 |
| Taking steroids for body building or improved athletic performance | 1.3 | 5.9 | 22.6 | 25.2 | 43.1 | 1.8 |

GAMBLING BEHAVIORS

Opportunities for gambling have increased rapidly since the 1990's, both nationally and in Indiana. In 1989 the State of Indiana began operating the Hoosier Lottery. River boat casinos and horse tracks were approved by the Indiana legislature in the mid-1990s, and in 2007 the State allowed slot machines to be placed in horse parks. The advent of online gambling and the rapid growth in the popularity of poker have also added to the current environment of gambling. A recent national survey of 18-21 year olds (Barnes et al., 2010) found that 75% of the college students reported gambling in the past year, which was similar to the rate reported by the non-college young adults surveyed. The rate of frequent gambling (weekly or more) was lower for U.S. college students (18%) than their non-college peers (25%). Male college students reported significantly higher prevalence rates of gambling (83% vs. 67%) and frequent gambling (31% vs. 6%) than the female students.

The most common form of gambling reported by Indiana students participating in the 2010 Indiana College Substance Use Survey was playing the lottery (31%), followed by playing cards at home (18%). Male Indiana students reported higher rates of gambling than female students for all gambling behaviors investigated. Over one-third of the male students (35%) played the lottery in the past year, compared to just over one-quarter (28%) of the female students. Almost three in ten male students (29%) played cards at home for money, compared to one in nine (11%) of the female students. Over one-fifth of the male students (22%) gambled in betting pools and almost as many (19%) gambled at a casino. Students 21 or older reported significantly higher rates of gambling at a casino (23%), playing the lottery (36%), and gambling on-line than the younger students. However, students under 21 reported higher rates of playing cards at home for money (19% vs. 17%) (Table 13).

Students were asked how frequently they gambled to assess the level of excessive gambling. Two percent of the students played the lottery at least once a week in the past year and one percent reported playing cards at home for money at least weekly (Figure 6). The most common negative consequence of gambling reported by Indiana students was feeling bad about their gambling (5%), followed by financial issues (2%) (Table 14).

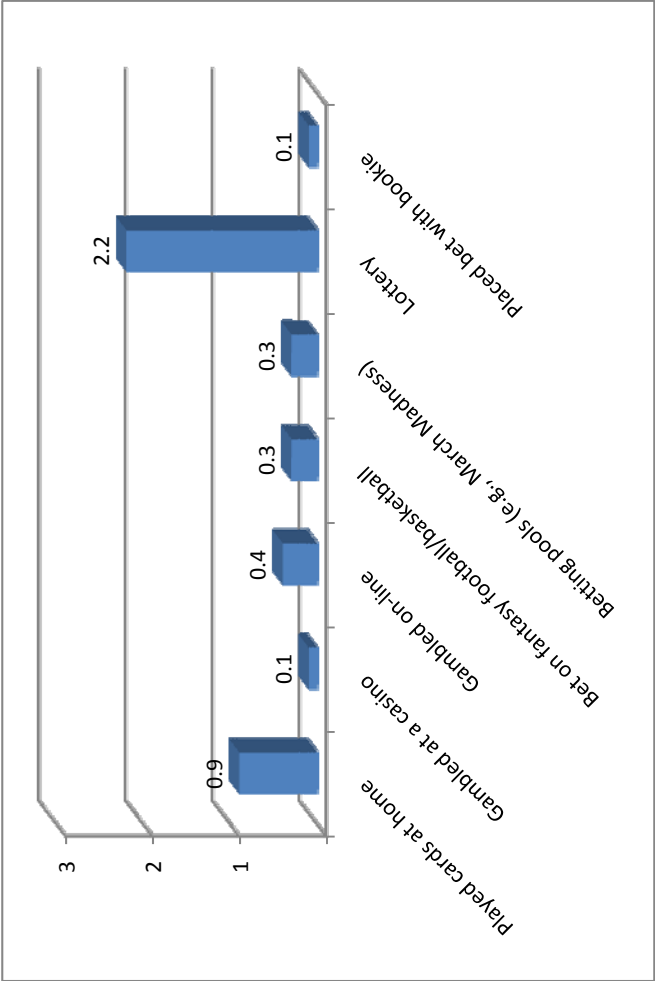
Table 13. Percentage of students reporting gambling experiences in past year (n = 5,606)¹

| Gambling | All Students | | By Gender | | By Age | |
|------------------------------------|--------------|--|-----------|----------|----------|------------|
| | Indiana | | Males | Females | Under 21 | 21 or Over |
| Played cards at home | 17.6 | | 29.0 | 10.9 *** | 18.9 | 16.5 * |
| Gambled at a casino | 14.5 | | 18.6 | 12.1 *** | 4.0 | 22.9 *** |
| Gambled on-line | 3.3 | | 7.5 | 0.8 *** | 2.7 | 3.7 * |
| Bet on fantasy football/basketball | 5.6 | | 12.2 | 1.6 *** | 5.0 | 6.0 |
| Betting pools (ex: March Madness) | 11.7 | | 22.0 | 5.6 *** | 10.9 | 12.4 |
| Lottery | 30.7 | | 35.0 | 28.2 *** | 24.8 | 35.5 *** |
| Placed bet with bookie | 1.0 | | 1.9 | 0.4 *** | 0.9 | 1.0 |

Note: Statistically significant difference at: * p < .05, ***p < .001

¹One of the schools participating in the 2010 survey did not include the gambling questions. Therefore, the sample size for the gambling data is smaller than for the other data.

Figure 6. Percentage of students who reported weekly or more frequent gambling in past year, by gambling category (n = 5,606)¹



¹One of the schools participating in the 2010 survey did not include the gambling questions. Therefore, the sample size for the gambling data is smaller than for the other data.

Table 14. Percentage of students who gambled in past year, who reported select consequences as a result of their gambling (n = 2,492).

| Consequence | % |
|---|-----|
| Academic problems (missed class, did poorly on exam, lower grades) | 0.3 |
| Issues with legal system | 0.2 |
| Financial issues | 2.4 |
| Felt bad about gambling | 4.7 |
| Poor physical health (sleep issues, depression, poor nutrition, poor hygiene) | 0.5 |
| Issues with friends and family (lied, strained relationships, arguments) | 1.0 |

CHARACTERISTICS OF SURVEY PARTICIPANTS

A majority of the survey respondents to the 2010 Indiana College Substance Use Survey were female (63%) and 21 years of age or older (54%). Most respondents were White (88%) and non-Hispanic (96%). Most of the survey respondents (90%) were full-time, and 89% estimated their Grade Point Average (GPA) at an A or B level. Half of the students (50%) lived on-campus, with 37% living in a residence hall.

Table 15. Demographic characteristics of survey participants

| | Frequency | % |
|--------------------------------|-----------|------|
| Gender | | |
| Male | 2,180 | 36.8 |
| Female | 3,748 | 63.2 |
| Age | | |
| Under 21 | 2,735 | 46.1 |
| 21 or older | 3,188 | 53.8 |
| No answer | 5 | 0.1 |
| Race | | |
| White | 5,211 | 87.9 |
| Black/African American | 218 | 3.7 |
| Asian | 154 | 2.6 |
| Native American/Alaskan Native | 19 | 0.3 |
| Hawaiian/Pacific Islander | 7 | 0.1 |
| More than one race | 152 | 2.6 |
| Other | 130 | 2.2 |
| No answer | 37 | 0.6 |
| Ethnicity | | |
| Hispanic | 188 | 3.2 |
| Non-Hispanic | 5,688 | 95.9 |
| No answer | 52 | 0.9 |
| Classification | | |
| Freshman | 1,729 | 29.2 |
| Sophomore | 1,506 | 25.4 |
| Junior | 1,195 | 20.2 |
| Senior | 1,139 | 19.2 |
| Grad/professional | 257 | 4.3 |
| Not seeking a degree | 32 | 0.5 |
| Other | 47 | 0.8 |
| No answer | 23 | 0.4 |

Table 15 (continued). Demographic characteristics of survey participants

| | Frequency | % |
|------------------------------|-----------|------|
| School | | |
| 2-year | 818 | 13.8 |
| 4-year | 5,110 | 86.2 |
| Student status | | |
| Full-time | 5,304 | 89.5 |
| Part-time | 574 | 9.7 |
| No answer | 50 | 0.8 |
| Approximate GPA | | |
| A | 2,492 | 42.0 |
| B | 2,767 | 46.6 |
| C | 615 | 10.4 |
| D | 28 | 0.5 |
| F | 4 | 0.1 |
| No answer | 22 | 0.4 |
| Location of residence | | |
| On-campus | 2,978 | 50.3 |
| Off-campus | 2,906 | 49.0 |
| No answer | 44 | 0.7 |
| Type of residence | | |
| House/apartment/etc. | 3,145 | 53.2 |
| Residence hall | 2,184 | 36.8 |
| Fraternity/Sorority | 334 | 5.6 |
| Other campus housing | 138 | 2.3 |
| Other | 91 | 1.5 |
| No answer | 36 | 0.6 |

REFERENCES

- Barnes, G.M., Welge, J.W., Hoffman, J.H., Tidwell, M.O. (2010) Comparisons of Gambling and Alcohol Use Among College Students and Noncollege Young People in the United States. *Journal of American College Health*, 58(5), 443-452.
- Behrendt, S., Wittchen, H. U., Höfler, M., Lieb, R., & Beesdo, K. (2009). Transitions from first substance use to substance use disorders in adolescence: Is early onset associated with a rapid escalation? *Drug and Alcohol Dependence*, 99(1-3), 68-78.
- Borsari, B., & Carey, K. B. (2003). Descriptive and Injunctive Norms in College Drinking: A Meta-Analytic Integration. *Journal of Studies on Alcohol*, 64(3), 331.
- Brown, R. L., Matousek, T. A., & Radue, M. B. (2009). Legal-Age Students' Provision of Alcohol to Underage College Students: An Exploratory Study. *Journal of American College Health*, 57(6), 611-618.
- Dawson, D. A., Goldstein, R. B., Chou, S. P., Ruan, W. J., & Grant, B. F. (2008). Age at first drink and the first incidence of adult-onset DSM-IV alcohol use disorders. *Alcoholism, Clinical And Experimental Research*, 32(12), 2149-2160.
- Fabian, L. E. A., Toomey, T. L., Lenk, K. M., & Erickson, D. J. (2008). How Do Underage College Students Get Alcohol? *Journal of Drug Education*, 38(1), 15-26.
- Grant, B. F., & Dawson, D. A. (1998). Age of onset of drug use and its association with DSM-IV drug abuse and dependence: results from the National Longitudinal Alcohol Epidemiologic Survey. *Journal Of Substance Abuse*, 10(2), 163-173.
- Hingson, R.W., & Wenxing, Z. (2009). Age of Drinking Onset, Alcohol Use Disorders, Frequent Heavy Drinking, and Unintentionally Injuring Oneself and Others After Drinking. *Pediatrics*, 123(6), 1477-1484.
- Hingson, R.W., Heeren, T., & Winter, M.R. (2006). Age at drinking onset and alcohol dependence: age at onset, duration, and severity. *Archives Of Pediatrics & Adolescent Medicine*, 160(7), 739-746.
- Hingson, R.W., Heeren, T., Winter, M., & Wechsler, H. (2005). Magnitude of alcohol-related mortality and morbidity among U.S. college students age 18-24: Changes from 1998 to 2001. *Annual Review of Public Health*, 26, 259-279.
- Johnston, L.D., O'Malley, P.M., Bachman, J.G., & Schulenberg, J.E. (2009). *Monitoring the Future, National Survey Results on Drug Use, 1975-2008. Volume II: College Students and Adults Ages 19-50*. NIH Pub. No. 09-7403. Bethesda, MD: National Institute on Drug Abuse.
- Johnston, L.D., O'Malley, P.M., Bachman, J.G., & Schulenberg, J. E. (2010). *Monitoring the Future National Survey Results on Drug Use, 1975-2009. Volume I: Secondary school students*. NIH Publication No. 10-7584. Bethesda, MD: National Institute on Drug Abuse.
- Kilmer, J. R., Walker, D. D., Lee, C. M., Palmer, R. S., Mallett, K. A., Fabiano, P., et al. (2006). Misperceptions of College Student Marijuana Use: Implications for Prevention. *Journal of Studies on Alcohol*, 67(2), 277-281.

- Martens, M. P., Page, J. C., Mowry, E. S., Damann, K. M., Taylor, K. K., & Cimini, M. D. (2006). Differences Between Actual and Perceived Student Norms: An Examination of Alcohol Use, Drug Use, and Sexual Behavior. *Journal of American College Health, 54*(5), 295-300.
- National Institute of Alcohol Abuse and Alcoholism (NIAAA). (2004). NIAAA council approves definition of binge drinking. *NIAAA Newsletter* (3), 3. Accessed at: http://pubs.niaaa.nih.gov/publications/Newsletter/winter2004/Newsletter_Number3.pdf
- National Institute on Alcohol Abuse and Alcoholism (NIAAA) Interdisciplinary Team on Underage Drinking Research. (2004/2005). The Scope of the Problem. *Alcohol Research & Health, 28*(3), 111-120.
- National Institute on Alcohol Abuse and Alcoholism (NIAAA). (2002). A Call to Action: Changing the Culture of Drinking at U.S. Colleges. NIH Pub. No. 02-5010. Bethesda, MD: NIAAA.
- Neighbors, C., Lee, C. M., Lewis, M. A., Fossos, N., & Larimer, M. E. (2007). Are Social Norms the Best Predictor of Outcomes Among Heavy-Drinking College Students? *Journal of Studies on Alcohol & Drugs, 68*(4), 556-565.
- Perkins, H. W., Haines, M. P., & Rice, R. (2005). Misperceiving the College Drinking Norm and Related Problems: A Nationwide Study of Exposure to Prevention Information, Perceived Norms and Student Alcohol Misuse. *Journal of Studies on Alcohol, 470-478*.
- Stinchfield, R., Kushner, M. G., & Winters, K. C. (2005). Alcohol use and prior substance abuse treatment in relation to gambling problem severity and gambling treatment outcome. *Journal of Gambling Studies, 21*(3), 273-297.
- Warner, L. A., & White, H. R. (2003). Longitudinal Effects of Age at Onset and First Drinking Situations on Problem Drinking. *Substance Use & Misuse, 38*(14), 1983-2016.
- Winters, K. C., & Anderson, N. (2000). Gambling involvement and drug use among adolescents. *Journal Of Gambling Studies, 16*(2-3), 175-198.
- Wechsler, H., & Nelson, T. F. (2008). What We Have Learned From the Harvard School of Public Health College Alcohol Study: Focusing Attention on College Student Alcohol Consumption and the Environmental Conditions That Promote It. *Journal of Studies on Alcohol & Drugs, 69*(4), 481-490.
- Wechsler, H., Kuo, M., Lee, H., & Dowdall, G. W. (2000a). Environmental correlates of underage alcohol use and related problems of college students. *American Journal Of Preventive Medicine, 19*(1), 24-29.
- Wechsler, H., Lee, J. E., Kuo, M., & Lee, H. (2000b). College Binge Drinking in the 1990s: A Continuing Problem. *Journal of American College Health, 48*(5), 199.
- Wechsler, H., Lee, J. E., Nelson, T. F., & Kuo, M. (2002). Underage College Students' Drinking Behavior, Access to Alcohol, and the Influence of Deterrence Policies. *Journal of American College Health, 50*(5), 223.

FREQUENCY TABLES

Substance use during the last 12 months: Cigarettes

| | | Frequency | Percent | Valid Percent | Cumulative Percent |
|-------|-----------|-----------|---------|---------------|--------------------|
| Valid | No answer | 5 | .1 | .1 | .1 |
| | No | 4284 | 72.3 | 72.3 | 72.4 |
| | Yes | 1639 | 27.6 | 27.6 | 100.0 |
| | Total | 5928 | 100.0 | 100.0 | |

Substance use during the last 12 months: Cigars

| | | Frequency | Percent | Valid Percent | Cumulative Percent |
|-------|-----------|-----------|---------|---------------|--------------------|
| Valid | No answer | 21 | .4 | .4 | .4 |
| | No | 4684 | 79.0 | 79.0 | 79.4 |
| | Yes | 1223 | 20.6 | 20.6 | 100.0 |
| | Total | 5928 | 100.0 | 100.0 | |

Substance use during the last 12 months: Chewing or smokeless tobacco

| | | Frequency | Percent | Valid Percent | Cumulative Percent |
|-------|-----------|-----------|---------|---------------|--------------------|
| Valid | No answer | 40 | .7 | .7 | .7 |
| | No | 5405 | 91.2 | 91.2 | 91.9 |
| | Yes | 483 | 8.1 | 8.1 | 100.0 |
| | Total | 5928 | 100.0 | 100.0 | |

Substance use during the last 12 months: Smoking tobacco with hooka or water pipe

| | | Frequency | Percent | Valid Percent | Cumulative Percent |
|-------|-----------|-----------|---------|---------------|--------------------|
| Valid | No answer | 21 | .4 | .4 | .4 |
| | No | 4552 | 76.8 | 76.8 | 77.1 |
| | Yes | 1355 | 22.9 | 22.9 | 100.0 |
| | Total | 5928 | 100.0 | 100.0 | |

Substance use during the last 12 months: Alcohol

| | | Frequency | Percent | Valid Percent | Cumulative Percent |
|-------|-----------|-----------|---------|---------------|--------------------|
| Valid | No answer | 5 | .1 | .1 | .1 |
| | No | 1602 | 27.0 | 27.0 | 27.1 |
| | Yes | 4321 | 72.9 | 72.9 | 100.0 |
| | Total | 5928 | 100.0 | 100.0 | |

Substance use during the last 12 months: Marijuana

| | | Frequency | Percent | Valid Percent | Cumulative Percent |
|-------|-----------|-----------|---------|---------------|--------------------|
| Valid | No answer | 12 | .2 | .2 | .2 |
| | No | 4611 | 77.8 | 77.8 | 78.0 |
| | Yes | 1305 | 22.0 | 22.0 | 100.0 |
| | Total | 5928 | 100.0 | 100.0 | |

Substance use during the last 12 months: Cocaine

| | | Frequency | Percent | Valid Percent | Cumulative Percent |
|-------|-----------|-----------|---------|---------------|--------------------|
| Valid | No answer | 41 | .7 | .7 | .7 |
| | No | 5706 | 96.3 | 96.3 | 96.9 |
| | Yes | 181 | 3.1 | 3.1 | 100.0 |
| | Total | 5928 | 100.0 | 100.0 | |

Substance use during the last 12 months: Hallucinogens

| | | Frequency | Percent | Valid Percent | Cumulative Percent |
|-------|-----------|-----------|---------|---------------|--------------------|
| Valid | No answer | 43 | .7 | .7 | .7 |
| | No | 5662 | 95.5 | 95.5 | 96.2 |
| | Yes | 223 | 3.8 | 3.8 | 100.0 |
| | Total | 5928 | 100.0 | 100.0 | |

Substance use during the last 12 months: Opiates

| | | Frequency | Percent | Valid Percent | Cumulative Percent |
|-------|-----------|-----------|---------|---------------|--------------------|
| Valid | No answer | 46 | .8 | .8 | .8 |
| | No | 5759 | 97.1 | 97.1 | 97.9 |
| | Yes | 123 | 2.1 | 2.1 | 100.0 |
| | Total | 5928 | 100.0 | 100.0 | |

Substance use during the last 12 months: Designer drugs

| | | Frequency | Percent | Valid Percent | Cumulative Percent |
|-------|-----------|-----------|---------|---------------|--------------------|
| Valid | No answer | 42 | .7 | .7 | .7 |
| | No | 5700 | 96.2 | 96.2 | 96.9 |
| | Yes | 186 | 3.1 | 3.1 | 100.0 |
| | Total | 5928 | 100.0 | 100.0 | |

Substance use during the last 12 months: Inhalants

| | | Frequency | Percent | Valid Percent | Cumulative Percent |
|-------|-----------|-----------|---------|---------------|--------------------|
| Valid | No answer | 47 | .8 | .8 | .8 |
| | No | 5767 | 97.3 | 97.3 | 98.1 |
| | Yes | 114 | 1.9 | 1.9 | 100.0 |
| | Total | 5928 | 100.0 | 100.0 | |

Substance use during the last 12 months: Steroids

| | | Frequency | Percent | Valid Percent | Cumulative Percent |
|-------|-----------|-----------|---------|---------------|--------------------|
| Valid | No answer | 44 | .7 | .7 | .7 |
| | No | 5771 | 97.4 | 97.4 | 98.1 |
| | Yes | 113 | 1.9 | 1.9 | 100.0 |
| | Total | 5928 | 100.0 | 100.0 | |

Substance use during the last 12 months: Other illegal drugs

| | | Frequency | Percent | Valid Percent | Cumulative Percent |
|-------|-----------|-----------|---------|---------------|--------------------|
| Valid | No answer | 48 | .8 | .8 | .8 |
| | No | 5703 | 96.2 | 96.2 | 97.0 |
| | Yes | 177 | 3.0 | 3.0 | 100.0 |
| | Total | 5928 | 100.0 | 100.0 | |

Substance use during the last 12 months: Prescription pills that are not prescribed to you

| | | Frequency | Percent | Valid Percent | Cumulative Percent |
|-------|-----------|-----------|---------|---------------|--------------------|
| Valid | No answer | 23 | .4 | .4 | .4 |
| | No | 5286 | 89.2 | 89.2 | 89.6 |
| | Yes | 619 | 10.4 | 10.4 | 100.0 |
| | Total | 5928 | 100.0 | 100.0 | |

Substance use during the last 12 months: Prescription medicines to get high

| | | Frequency | Percent | Valid Percent | Cumulative Percent |
|-------|-----------|-----------|---------|---------------|--------------------|
| Valid | No answer | 41 | .7 | .7 | .7 |
| | No | 5594 | 94.4 | 94.4 | 95.1 |
| | Yes | 293 | 4.9 | 4.9 | 100.0 |
| | Total | 5928 | 100.0 | 100.0 | |

Substance use during the last 12 months: Over-the-counter medications to get high

| | | Frequency | Percent | Valid Percent | Cumulative Percent |
|-------|-----------|-----------|---------|---------------|--------------------|
| Valid | No answer | 47 | .8 | .8 | .8 |
| | No | 5711 | 96.3 | 96.3 | 97.1 |
| | Yes | 170 | 2.9 | 2.9 | 100.0 |
| | Total | 5928 | 100.0 | 100.0 | |

Substance use during the last 12 months: Methamphetamine

| | | Frequency | Percent | Valid Percent | Cumulative Percent |
|-------|-----------|-----------|---------|---------------|--------------------|
| Valid | No answer | 54 | .9 | .9 | .9 |
| | No | 5775 | 97.4 | 97.4 | 98.3 |
| | Yes | 99 | 1.7 | 1.7 | 100.0 |
| | Total | 5928 | 100.0 | 100.0 | |

Number of days in the past month substance was used: Cigarettes

| | | Frequency | Percent | Valid Percent | Cumulative Percent |
|-------|-------------|-----------|---------|---------------|--------------------|
| Valid | No answer | 1476 | 24.9 | 24.9 | 24.9 |
| | 0 day | 3242 | 54.7 | 54.7 | 79.6 |
| | 1-2 days | 375 | 6.3 | 6.3 | 85.9 |
| | 3-5 days | 123 | 2.1 | 2.1 | 88.0 |
| | 6-9 days | 76 | 1.3 | 1.3 | 89.3 |
| | 10-19 days | 106 | 1.8 | 1.8 | 91.1 |
| | 20-29 days | 75 | 1.3 | 1.3 | 92.3 |
| | All 30 days | 455 | 7.7 | 7.7 | 100.0 |
| | Total | 5928 | 100.0 | 100.0 | |

Number of days in the past month substance was used: Cigars

| | | Frequency | Percent | Valid Percent | Cumulative Percent |
|-------|-------------|-----------|---------|---------------|--------------------|
| Valid | No answer | 1551 | 26.2 | 26.2 | 26.2 |
| | 0 day | 3729 | 62.9 | 62.9 | 89.1 |
| | 1-2 days | 483 | 8.1 | 8.1 | 97.2 |
| | 3-5 days | 89 | 1.5 | 1.5 | 98.7 |
| | 6-9 days | 35 | .6 | .6 | 99.3 |
| | 10-19 days | 18 | .3 | .3 | 99.6 |
| | 20-29 days | 6 | .1 | .1 | 99.7 |
| | All 30 days | 17 | .3 | .3 | 100.0 |
| | Total | 5928 | 100.0 | 100.0 | |

Number of days in the past month substance was used: Chewing or smokeless tobacco

| | | Frequency | Percent | Valid Percent | Cumulative Percent |
|-------|-------------|-----------|---------|---------------|--------------------|
| Valid | No answer | 1676 | 28.3 | 28.3 | 28.3 |
| | 0 day | 3962 | 66.8 | 66.8 | 95.1 |
| | 1-2 days | 107 | 1.8 | 1.8 | 96.9 |
| | 3-5 days | 38 | .6 | .6 | 97.6 |
| | 6-9 days | 22 | .4 | .4 | 97.9 |
| | 10-19 days | 35 | .6 | .6 | 98.5 |
| | 20-29 days | 30 | .5 | .5 | 99.0 |
| | All 30 days | 58 | 1.0 | 1.0 | 100.0 |
| | Total | 5928 | 100.0 | 100.0 | |

Number of days in the past month substance was used: Smoking tobacco with hooka or water pipe

| | | Frequency | Percent | Valid Percent | Cumulative Percent |
|-------|-------------|-----------|---------|---------------|--------------------|
| Valid | No answer | 1581 | 26.7 | 26.7 | 26.7 |
| | 0 day | 3673 | 62.0 | 62.0 | 88.6 |
| | 1-2 days | 479 | 8.1 | 8.1 | 96.7 |
| | 3-5 days | 114 | 1.9 | 1.9 | 98.6 |
| | 6-9 days | 47 | .8 | .8 | 99.4 |
| | 10-19 days | 23 | .4 | .4 | 99.8 |
| | 20-29 days | 4 | .1 | .1 | 99.9 |
| | All 30 days | 7 | .1 | .1 | 100.0 |
| | Total | 5928 | 100.0 | 100.0 | |

Number of days in the past month substance was used: Alcohol

| | | Frequency | Percent | Valid Percent | Cumulative Percent |
|-------|-------------|-----------|---------|---------------|--------------------|
| Valid | No answer | 604 | 10.2 | 10.2 | 10.2 |
| | 0 day | 1432 | 24.2 | 24.2 | 34.3 |
| | 1-2 days | 1228 | 20.7 | 20.7 | 55.1 |
| | 3-5 days | 1071 | 18.1 | 18.1 | 73.1 |
| | 6-9 days | 874 | 14.7 | 14.7 | 87.9 |
| | 10-19 days | 592 | 10.0 | 10.0 | 97.9 |
| | 20-29 days | 98 | 1.7 | 1.7 | 99.5 |
| | All 30 days | 29 | .5 | .5 | 100.0 |
| | Total | 5928 | 100.0 | 100.0 | |

Number of days in the past month substance was used: Marijuana

| | | Frequency | Percent | Valid Percent | Cumulative Percent |
|-------|-------------|-----------|---------|---------------|--------------------|
| Valid | No answer | 1569 | 26.5 | 26.5 | 26.5 |
| | 0 day | 3494 | 58.9 | 58.9 | 85.4 |
| | 1-2 days | 359 | 6.1 | 6.1 | 91.5 |
| | 3-5 days | 130 | 2.2 | 2.2 | 93.7 |
| | 6-9 days | 75 | 1.3 | 1.3 | 94.9 |
| | 10-19 days | 95 | 1.6 | 1.6 | 96.5 |
| | 20-29 days | 110 | 1.9 | 1.9 | 98.4 |
| | All 30 days | 96 | 1.6 | 1.6 | 100.0 |
| | Total | 5928 | 100.0 | 100.0 | |

Number of days in the past month substance was used: Cocaine

| | | Frequency | Percent | Valid Percent | Cumulative Percent |
|-------|-------------|-----------|---------|---------------|--------------------|
| Valid | No answer | 1745 | 29.4 | 29.4 | 29.4 |
| | 0 day | 4132 | 69.7 | 69.7 | 99.1 |
| | 1-2 days | 38 | .6 | .6 | 99.8 |
| | 3-5 days | 8 | .1 | .1 | 99.9 |
| | 6-9 days | 1 | .0 | .0 | 99.9 |
| | 10-19 days | 2 | .0 | .0 | 100.0 |
| | 20-29 days | 1 | .0 | .0 | 100.0 |
| | All 30 days | 1 | .0 | .0 | 100.0 |
| | Total | 5928 | 100.0 | 100.0 | |

Number of days in the past month substance was used: Hallucinogens

| | | Frequency | Percent | Valid Percent | Cumulative Percent |
|-------|-----------|-----------|---------|---------------|--------------------|
| Valid | No answer | 1739 | 29.3 | 29.3 | 29.3 |
| | 0 day | 4133 | 69.7 | 69.7 | 99.1 |
| | 1-2 days | 46 | .8 | .8 | 99.8 |
| | 3-5 days | 7 | .1 | .1 | 99.9 |
| | 6-9 days | 3 | .1 | .1 | 100.0 |
| | Total | 5928 | 100.0 | 100.0 | |

Number of days in the past month substance was used: Opiates

| | | Frequency | Percent | Valid Percent | Cumulative Percent |
|-------|------------|-----------|---------|---------------|--------------------|
| Valid | No answer | 1751 | 29.5 | 29.5 | 29.5 |
| | 0 day | 4153 | 70.1 | 70.1 | 99.6 |
| | 1-2 days | 12 | .2 | .2 | 99.8 |
| | 3-5 days | 8 | .1 | .1 | 99.9 |
| | 6-9 days | 3 | .1 | .1 | 100.0 |
| | 10-19 days | 1 | .0 | .0 | 100.0 |
| | Total | 5928 | 100.0 | 100.0 | |

Number of days in the past month substance was used: Designer drugs

| | | Frequency | Percent | Valid Percent | Cumulative Percent |
|-------|-----------|-----------|---------|---------------|--------------------|
| Valid | No answer | 1755 | 29.6 | 29.6 | 29.6 |
| | 0 day | 4138 | 69.8 | 69.8 | 99.4 |
| | 1-2 days | 25 | .4 | .4 | 99.8 |
| | 3-5 days | 6 | .1 | .1 | 99.9 |
| | 6-9 days | 4 | .1 | .1 | 100.0 |
| | Total | 5928 | 100.0 | 100.0 | |

Number of days in the past month substance was used: Inhalants

| | | Frequency | Percent | Valid Percent | Cumulative Percent |
|-------|------------|-----------|---------|---------------|--------------------|
| Valid | No answer | 1753 | 29.6 | 29.6 | 29.6 |
| | 0 day | 4158 | 70.1 | 70.1 | 99.7 |
| | 1-2 days | 13 | .2 | .2 | 99.9 |
| | 3-5 days | 1 | .0 | .0 | 99.9 |
| | 6-9 days | 1 | .0 | .0 | 100.0 |
| | 10-19 days | 1 | .0 | .0 | 100.0 |
| | 20-29 days | 1 | .0 | .0 | 100.0 |
| | Total | 5928 | 100.0 | 100.0 | |

Number of days in the past month substance was used: Steroids

| | | Frequency | Percent | Valid Percent | Cumulative Percent |
|-------|-------------|-----------|---------|---------------|--------------------|
| Valid | No answer | 1747 | 29.5 | 29.5 | 29.5 |
| | 0 day | 4161 | 70.2 | 70.2 | 99.7 |
| | 1-2 days | 2 | .0 | .0 | 99.7 |
| | 3-5 days | 1 | .0 | .0 | 99.7 |
| | 6-9 days | 7 | .1 | .1 | 99.8 |
| | 10-19 days | 3 | .1 | .1 | 99.9 |
| | 20-29 days | 1 | .0 | .0 | 99.9 |
| | All 30 days | 6 | .1 | .1 | 100.0 |
| | Total | 5928 | 100.0 | 100.0 | |

Number of days in the past month substance was used: Other illegal drugs

| | | Frequency | Percent | Valid Percent | Cumulative Percent |
|-------|------------|-----------|---------|---------------|--------------------|
| Valid | No answer | 1754 | 29.6 | 29.6 | 29.6 |
| | 0 day | 4129 | 69.7 | 69.7 | 99.2 |
| | 1-2 days | 23 | .4 | .4 | 99.6 |
| | 3-5 days | 11 | .2 | .2 | 99.8 |
| | 6-9 days | 6 | .1 | .1 | 99.9 |
| | 10-19 days | 4 | .1 | .1 | 100.0 |
| | 20-29 days | 1 | .0 | .0 | 100.0 |
| | Total | 5928 | 100.0 | 100.0 | |

Number of days in the past month substance was used: Prescription pills that are not prescribed to you

| | | Frequency | Percent | Valid Percent | Cumulative Percent |
|-------|-------------|-----------|---------|---------------|--------------------|
| Valid | No answer | 1675 | 28.3 | 28.3 | 28.3 |
| | 0 day | 3891 | 65.6 | 65.6 | 93.9 |
| | 1-2 days | 202 | 3.4 | 3.4 | 97.3 |
| | 3-5 days | 87 | 1.5 | 1.5 | 98.8 |
| | 6-9 days | 43 | .7 | .7 | 99.5 |
| | 10-19 days | 13 | .2 | .2 | 99.7 |
| | 20-29 days | 11 | .2 | .2 | 99.9 |
| | All 30 days | 6 | .1 | .1 | 100.0 |
| | Total | 5928 | 100.0 | 100.0 | |

Number of days in the past month substance was used: Prescription medicines to get high

| | | Frequency | Percent | Valid Percent | Cumulative Percent |
|-------|-------------|-----------|---------|---------------|--------------------|
| Valid | No answer | 1736 | 29.3 | 29.3 | 29.3 |
| | 0 day | 4063 | 68.5 | 68.5 | 97.8 |
| | 1-2 days | 61 | 1.0 | 1.0 | 98.9 |
| | 3-5 days | 32 | .5 | .5 | 99.4 |
| | 6-9 days | 15 | .3 | .3 | 99.6 |
| | 10-19 days | 10 | .2 | .2 | 99.8 |
| | 20-29 days | 8 | .1 | .1 | 99.9 |
| | All 30 days | 3 | .1 | .1 | 100.0 |
| | Total | 5928 | 100.0 | 100.0 | |

Number of days in the past month substance was used: Over-the-counter medications to get high

| | | Frequency | Percent | Valid Percent | Cumulative Percent |
|-------|------------|-----------|---------|---------------|--------------------|
| Valid | No answer | 1747 | 29.5 | 29.5 | 29.5 |
| | 0 day | 4136 | 69.8 | 69.8 | 99.2 |
| | 1-2 days | 28 | .5 | .5 | 99.7 |
| | 3-5 days | 9 | .2 | .2 | 99.9 |
| | 6-9 days | 4 | .1 | .1 | 99.9 |
| | 10-19 days | 1 | .0 | .0 | 99.9 |
| | 20-29 days | 3 | .1 | .1 | 100.0 |
| | Total | 5928 | 100.0 | 100.0 | |

Number of days in the past month substance was used: Methamphetamine

| | | Frequency | Percent | Valid Percent | Cumulative Percent |
|-------|-------------|-----------|---------|---------------|--------------------|
| Valid | No answer | 1768 | 29.8 | 29.8 | 29.8 |
| | 0 day | 4146 | 69.9 | 69.9 | 99.8 |
| | 1-2 days | 5 | .1 | .1 | 99.8 |
| | 3-5 days | 2 | .0 | .0 | 99.9 |
| | 6-9 days | 4 | .1 | .1 | 99.9 |
| | 10-19 days | 2 | .0 | .0 | 100.0 |
| | All 30 days | 1 | .0 | .0 | 100.0 |
| | Total | 5928 | 100.0 | 100.0 | |

Use of substance in the past year without a prescription: Adderall

| | | Frequency | Percent | Valid Percent | Cumulative Percent |
|-------|----------------|-----------|---------|---------------|--------------------|
| Valid | No answer | 74 | 1.2 | 1.2 | 1.2 |
| | Did not use | 5393 | 91.0 | 91.0 | 92.2 |
| | Once per year | 185 | 3.1 | 3.1 | 95.3 |
| | 6 times a year | 149 | 2.5 | 2.5 | 97.9 |
| | Once a month | 74 | 1.2 | 1.2 | 99.1 |
| | Once a week | 29 | .5 | .5 | 99.6 |
| | 3 times a week | 16 | .3 | .3 | 99.9 |
| | 5 times a week | 3 | .1 | .1 | 99.9 |
| | Every day | 5 | .1 | .1 | 100.0 |
| | Total | 5928 | 100.0 | 100.0 | |

Use of substance in the past year without a prescription: Ritalin

| | | Frequency | Percent | Valid Percent | Cumulative Percent |
|-------|----------------|-----------|---------|---------------|--------------------|
| Valid | No answer | 104 | 1.8 | 1.8 | 1.8 |
| | Did not use | 5769 | 97.3 | 97.3 | 99.1 |
| | Once per year | 22 | .4 | .4 | 99.4 |
| | 6 times a year | 19 | .3 | .3 | 99.8 |
| | Once a month | 9 | .2 | .2 | 99.9 |
| | 3 times a week | 2 | .0 | .0 | 99.9 |
| | Every day | 3 | .1 | .1 | 100.0 |
| | Total | 5928 | 100.0 | 100.0 | |

Use of substance in the past year without a prescription: Xanax

| | | Frequency | Percent | Valid Percent | Cumulative Percent |
|-------|----------------|-----------|---------|---------------|--------------------|
| Valid | No answer | 91 | 1.5 | 1.5 | 1.5 |
| | Did not use | 5622 | 94.8 | 94.8 | 96.4 |
| | Once per year | 106 | 1.8 | 1.8 | 98.2 |
| | 6 times a year | 63 | 1.1 | 1.1 | 99.2 |
| | Once a month | 24 | .4 | .4 | 99.6 |
| | Once a week | 7 | .1 | .1 | 99.7 |
| | 3 times a week | 5 | .1 | .1 | 99.8 |
| | 5 times a week | 4 | .1 | .1 | 99.9 |
| | Every day | 6 | .1 | .1 | 100.0 |
| | Total | 5928 | 100.0 | 100.0 | |

Use of substance in the past year without a prescription: Codeine

| | | Frequency | Percent | Valid Percent | Cumulative Percent |
|-------|----------------|-----------|---------|---------------|--------------------|
| Valid | No answer | 111 | 1.9 | 1.9 | 1.9 |
| | Did not use | 5691 | 96.0 | 96.0 | 97.9 |
| | Once per year | 58 | 1.0 | 1.0 | 98.9 |
| | 6 times a year | 38 | .6 | .6 | 99.5 |
| | Once a month | 17 | .3 | .3 | 99.8 |
| | Once a week | 7 | .1 | .1 | 99.9 |
| | 3 times a week | 4 | .1 | .1 | 100.0 |
| | Every day | 2 | .0 | .0 | 100.0 |
| | Total | 5928 | 100.0 | 100.0 | |

Use of substance in the past year without a prescription: Hydrocodone

| | | Frequency | Percent | Valid Percent | Cumulative Percent |
|-------|----------------|-----------|---------|---------------|--------------------|
| Valid | No answer | 87 | 1.5 | 1.5 | 1.5 |
| | Did not use | 5581 | 94.1 | 94.1 | 95.6 |
| | Once per year | 105 | 1.8 | 1.8 | 97.4 |
| | 6 times a year | 100 | 1.7 | 1.7 | 99.1 |
| | Once a month | 31 | .5 | .5 | 99.6 |
| | Once a week | 12 | .2 | .2 | 99.8 |
| | 3 times a week | 7 | .1 | .1 | 99.9 |
| | 5 times a week | 1 | .0 | .0 | 99.9 |
| | Every day | 4 | .1 | .1 | 100.0 |
| | Total | 5928 | 100.0 | 100.0 | |

Use of substance in the past year without a prescription: Percocet

| | | Frequency | Percent | Valid Percent | Cumulative Percent |
|-------|----------------|-----------|---------|---------------|--------------------|
| Valid | No answer | 111 | 1.9 | 1.9 | 1.9 |
| | Did not use | 5723 | 96.5 | 96.5 | 98.4 |
| | Once per year | 37 | .6 | .6 | 99.0 |
| | 6 times a year | 26 | .4 | .4 | 99.5 |
| | Once a month | 17 | .3 | .3 | 99.8 |
| | Once a week | 6 | .1 | .1 | 99.9 |
| | 3 times a week | 4 | .1 | .1 | 99.9 |
| | 5 times a week | 1 | .0 | .0 | 99.9 |
| | Every day | 3 | .1 | .1 | 100.0 |
| | Total | 5928 | 100.0 | 100.0 | |

Use of substance in the past year without a prescription: Oxycontin

| | | Frequency | Percent | Valid Percent | Cumulative Percent |
|-------|----------------|-----------|---------|---------------|--------------------|
| Valid | No answer | 102 | 1.7 | 1.7 | 1.7 |
| | Did not use | 5749 | 97.0 | 97.0 | 98.7 |
| | Once per year | 37 | .6 | .6 | 99.3 |
| | 6 times a year | 17 | .3 | .3 | 99.6 |
| | Once a month | 9 | .2 | .2 | 99.8 |
| | Once a week | 6 | .1 | .1 | 99.9 |
| | 3 times a week | 2 | .0 | .0 | 99.9 |
| | 5 times a week | 3 | .1 | .1 | 99.9 |
| | Every day | 3 | .1 | .1 | 100.0 |
| | Total | 5928 | 100.0 | 100.0 | |

Use of substance in the past year without a prescription: Morphine

| | | Frequency | Percent | Valid Percent | Cumulative Percent |
|-------|----------------|-----------|---------|---------------|--------------------|
| Valid | No answer | 103 | 1.7 | 1.7 | 1.7 |
| | Did not use | 5781 | 97.5 | 97.5 | 99.3 |
| | Once per year | 26 | .4 | .4 | 99.7 |
| | 6 times a year | 5 | .1 | .1 | 99.8 |
| | Once a month | 6 | .1 | .1 | 99.9 |
| | Once a week | 2 | .0 | .0 | 99.9 |
| | 3 times a week | 2 | .0 | .0 | 99.9 |
| | Every day | 3 | .1 | .1 | 100.0 |
| | Total | 5928 | 100.0 | 100.0 | |

Use of substance in the past year without a prescription: Methadone

| | | Frequency | Percent | Valid Percent | Cumulative Percent |
|-------|----------------|-----------|---------|---------------|--------------------|
| Valid | No answer | 102 | 1.7 | 1.7 | 1.7 |
| | Did not use | 5793 | 97.7 | 97.7 | 99.4 |
| | Once per year | 11 | .2 | .2 | 99.6 |
| | 6 times a year | 5 | .1 | .1 | 99.7 |
| | Once a month | 7 | .1 | .1 | 99.8 |
| | Once a week | 4 | .1 | .1 | 99.9 |
| | 3 times a week | 2 | .0 | .0 | 99.9 |
| | 5 times a week | 1 | .0 | .0 | 99.9 |
| | Every day | 3 | .1 | .1 | 100.0 |
| | Total | 5928 | 100.0 | 100.0 | |

Age of first time use: Cigarettes

| | | Frequency | Percent | Valid Percent | Cumulative Percent |
|-------|-------------|-----------|---------|---------------|--------------------|
| Valid | No answer | 66 | 1.1 | 1.1 | 1.1 |
| | Did not use | 3314 | 55.9 | 55.9 | 57.0 |
| | Under 10 | 76 | 1.3 | 1.3 | 58.3 |
| | 10-11 | 115 | 1.9 | 1.9 | 60.2 |
| | 12-13 | 315 | 5.3 | 5.3 | 65.6 |
| | 14-15 | 482 | 8.1 | 8.1 | 73.7 |
| | 16-17 | 650 | 11.0 | 11.0 | 84.6 |
| | 18-20 | 784 | 13.2 | 13.2 | 97.9 |
| | 21-25 | 112 | 1.9 | 1.9 | 99.8 |
| | 26+ | 14 | .2 | .2 | 100.0 |
| | Total | 5928 | 100.0 | 100.0 | |

Age of first time use: Cigars

| | | Frequency | Percent | Valid Percent | Cumulative Percent |
|-------|-------------|-----------|---------|---------------|--------------------|
| Valid | No answer | 145 | 2.4 | 2.4 | 2.4 |
| | Did not use | 3763 | 63.5 | 63.5 | 65.9 |
| | Under 10 | 16 | .3 | .3 | 66.2 |
| | 10-11 | 13 | .2 | .2 | 66.4 |
| | 12-13 | 69 | 1.2 | 1.2 | 67.6 |
| | 14-15 | 230 | 3.9 | 3.9 | 71.5 |
| | 16-17 | 576 | 9.7 | 9.7 | 81.2 |
| | 18-20 | 933 | 15.7 | 15.7 | 96.9 |
| | 21-25 | 142 | 2.4 | 2.4 | 99.3 |
| | 26+ | 41 | .7 | .7 | 100.0 |
| | Total | 5928 | 100.0 | 100.0 | |

Age of first time use: Chewing or smokeless tobacco

| | | Frequency | Percent | Valid Percent | Cumulative Percent |
|-------|-------------|-----------|---------|---------------|--------------------|
| Valid | No answer | 161 | 2.7 | 2.7 | 2.7 |
| | Did not use | 4957 | 83.6 | 83.6 | 86.3 |
| | Under 10 | 7 | .1 | .1 | 86.5 |
| | 10-11 | 18 | .3 | .3 | 86.8 |
| | 12-13 | 51 | .9 | .9 | 87.6 |
| | 14-15 | 113 | 1.9 | 1.9 | 89.5 |
| | 16-17 | 257 | 4.3 | 4.3 | 93.9 |
| | 18-20 | 302 | 5.1 | 5.1 | 99.0 |
| | 21-25 | 54 | .9 | .9 | 99.9 |
| | 26+ | 8 | .1 | .1 | 100.0 |
| | Total | 5928 | 100.0 | 100.0 | |

Age of first time use: Smoking tobacco with hooka or water pipe

| | | Frequency | Percent | Valid Percent | Cumulative Percent |
|-------|-------------|-----------|---------|---------------|--------------------|
| Valid | No answer | 163 | 2.7 | 2.7 | 2.7 |
| | Did not use | 4079 | 68.8 | 68.8 | 71.6 |
| | Under 10 | 1 | .0 | .0 | 71.6 |
| | 10-11 | 3 | .1 | .1 | 71.6 |
| | 12-13 | 17 | .3 | .3 | 71.9 |
| | 14-15 | 63 | 1.1 | 1.1 | 73.0 |
| | 16-17 | 415 | 7.0 | 7.0 | 80.0 |
| | 18-20 | 1062 | 17.9 | 17.9 | 97.9 |
| | 21-25 | 107 | 1.8 | 1.8 | 99.7 |
| | 26+ | 18 | .3 | .3 | 100.0 |
| | Total | 5928 | 100.0 | 100.0 | |

Age of first time use: Alcohol

| | | Frequency | Percent | Valid Percent | Cumulative Percent |
|-------|-------------|-----------|---------|---------------|--------------------|
| Valid | No answer | 44 | .7 | .7 | .7 |
| | Did not use | 1023 | 17.3 | 17.3 | 18.0 |
| | Under 10 | 105 | 1.8 | 1.8 | 19.8 |
| | 10-11 | 68 | 1.1 | 1.1 | 20.9 |
| | 12-13 | 314 | 5.3 | 5.3 | 26.2 |
| | 14-15 | 907 | 15.3 | 15.3 | 41.5 |
| | 16-17 | 1425 | 24.0 | 24.0 | 65.6 |
| | 18-20 | 1625 | 27.4 | 27.4 | 93.0 |
| | 21-25 | 396 | 6.7 | 6.7 | 99.6 |
| | 26+ | 21 | .4 | .4 | 100.0 |
| | Total | 5928 | 100.0 | 100.0 | |

Age of first time use: Marijuana

| | | Frequency | Percent | Valid Percent | Cumulative Percent |
|-------|-------------|-----------|---------|---------------|--------------------|
| Valid | No answer | 103 | 1.7 | 1.7 | 1.7 |
| | Did not use | 3677 | 62.0 | 62.0 | 63.8 |
| | Under 10 | 9 | .2 | .2 | 63.9 |
| | 10-11 | 27 | .5 | .5 | 64.4 |
| | 12-13 | 134 | 2.3 | 2.3 | 66.6 |
| | 14-15 | 408 | 6.9 | 6.9 | 73.5 |
| | 16-17 | 656 | 11.1 | 11.1 | 84.6 |
| | 18-20 | 771 | 13.0 | 13.0 | 97.6 |
| | 21-25 | 133 | 2.2 | 2.2 | 99.8 |
| | 26+ | 10 | .2 | .2 | 100.0 |
| | Total | 5928 | 100.0 | 100.0 | |

Age of first time use: Cocaine

| | | Frequency | Percent | Valid Percent | Cumulative Percent |
|-------|-------------|-----------|---------|---------------|--------------------|
| Valid | No answer | 153 | 2.6 | 2.6 | 2.6 |
| | Did not use | 5417 | 91.4 | 91.4 | 94.0 |
| | Under 10 | 1 | .0 | .0 | 94.0 |
| | 10-11 | 1 | .0 | .0 | 94.0 |
| | 12-13 | 10 | .2 | .2 | 94.2 |
| | 14-15 | 22 | .4 | .4 | 94.5 |
| | 16-17 | 88 | 1.5 | 1.5 | 96.0 |
| | 18-20 | 155 | 2.6 | 2.6 | 98.6 |
| | 21-25 | 68 | 1.1 | 1.1 | 99.8 |
| | 26+ | 13 | .2 | .2 | 100.0 |
| | Total | 5928 | 100.0 | 100.0 | |

Age of first time use: Hallucinogens

| | | Frequency | Percent | Valid Percent | Cumulative Percent |
|-------|-------------|-----------|---------|---------------|--------------------|
| Valid | No answer | 157 | 2.6 | 2.6 | 2.6 |
| | Did not use | 5389 | 90.9 | 90.9 | 93.6 |
| | 10-11 | 1 | .0 | .0 | 93.6 |
| | 12-13 | 10 | .2 | .2 | 93.7 |
| | 14-15 | 45 | .8 | .8 | 94.5 |
| | 16-17 | 123 | 2.1 | 2.1 | 96.6 |
| | 18-20 | 166 | 2.8 | 2.8 | 99.4 |
| | 21-25 | 35 | .6 | .6 | 100.0 |
| | 26+ | 2 | .0 | .0 | 100.0 |
| | Total | 5928 | 100.0 | 100.0 | |

Age of first time use: Opiates

| | | Frequency | Percent | Valid Percent | Cumulative Percent |
|-------|-------------|-----------|---------|---------------|--------------------|
| Valid | No answer | 172 | 2.9 | 2.9 | 2.9 |
| | Did not use | 5642 | 95.2 | 95.2 | 98.1 |
| | 12-13 | 1 | .0 | .0 | 98.1 |
| | 14-15 | 15 | .3 | .3 | 98.3 |
| | 16-17 | 36 | .6 | .6 | 99.0 |
| | 18-20 | 45 | .8 | .8 | 99.7 |
| | 21-25 | 13 | .2 | .2 | 99.9 |
| | 26+ | 4 | .1 | .1 | 100.0 |
| | Total | 5928 | 100.0 | 100.0 | |

Age of first time use: Designer drugs

| | | Frequency | Percent | Valid Percent | Cumulative Percent |
|-------|-------------|-----------|---------|---------------|--------------------|
| Valid | No answer | 167 | 2.8 | 2.8 | 2.8 |
| | Did not use | 5500 | 92.8 | 92.8 | 95.6 |
| | 12-13 | 5 | .1 | .1 | 95.7 |
| | 14-15 | 18 | .3 | .3 | 96.0 |
| | 16-17 | 57 | 1.0 | 1.0 | 96.9 |
| | 18-20 | 131 | 2.2 | 2.2 | 99.2 |
| | 21-25 | 42 | .7 | .7 | 99.9 |
| | 26+ | 8 | .1 | .1 | 100.0 |
| | Total | 5928 | 100.0 | 100.0 | |

Age of first time use: Inhalants

| | | Frequency | Percent | Valid Percent | Cumulative Percent |
|-------|-------------|-----------|---------|---------------|--------------------|
| Valid | No answer | 164 | 2.8 | 2.8 | 2.8 |
| | Did not use | 5619 | 94.8 | 94.8 | 97.6 |
| | Under 10 | 6 | .1 | .1 | 97.7 |
| | 10-11 | 6 | .1 | .1 | 97.8 |
| | 12-13 | 30 | .5 | .5 | 98.3 |
| | 14-15 | 29 | .5 | .5 | 98.8 |
| | 16-17 | 43 | .7 | .7 | 99.5 |
| | 18-20 | 24 | .4 | .4 | 99.9 |
| | 21-25 | 6 | .1 | .1 | 100.0 |
| | 26+ | 1 | .0 | .0 | 100.0 |
| | Total | 5928 | 100.0 | 100.0 | |

Age of first time use: Steroids

| | | Frequency | Percent | Valid Percent | Cumulative Percent |
|-------|-------------|-----------|---------|---------------|--------------------|
| Valid | No answer | 171 | 2.9 | 2.9 | 2.9 |
| | Did not use | 5710 | 96.3 | 96.3 | 99.2 |
| | Under 10 | 1 | .0 | .0 | 99.2 |
| | 10-11 | 2 | .0 | .0 | 99.3 |
| | 12-13 | 2 | .0 | .0 | 99.3 |
| | 14-15 | 2 | .0 | .0 | 99.3 |
| | 16-17 | 10 | .2 | .2 | 99.5 |
| | 18-20 | 18 | .3 | .3 | 99.8 |
| | 21-25 | 6 | .1 | .1 | 99.9 |
| | 26+ | 6 | .1 | .1 | 100.0 |
| | Total | 5928 | 100.0 | 100.0 | |

Age of first time use: Other illegal drugs

| | | Frequency | Percent | Valid Percent | Cumulative Percent |
|-------|-------------|-----------|---------|---------------|--------------------|
| Valid | No answer | 174 | 2.9 | 2.9 | 2.9 |
| | Did not use | 5572 | 94.0 | 94.0 | 96.9 |
| | 10-11 | 1 | .0 | .0 | 96.9 |
| | 12-13 | 8 | .1 | .1 | 97.1 |
| | 14-15 | 22 | .4 | .4 | 97.5 |
| | 16-17 | 59 | 1.0 | 1.0 | 98.4 |
| | 18-20 | 72 | 1.2 | 1.2 | 99.7 |
| | 21-25 | 18 | .3 | .3 | 100.0 |
| | 26+ | 2 | .0 | .0 | 100.0 |
| | Total | 5928 | 100.0 | 100.0 | |

Age of first time use: Prescription pills not prescribed to you

| | | Frequency | Percent | Valid Percent | Cumulative Percent |
|-------|-------------|-----------|---------|---------------|--------------------|
| Valid | No answer | 148 | 2.5 | 2.5 | 2.5 |
| | Did not use | 4963 | 83.7 | 83.7 | 86.2 |
| | Under 10 | 9 | .2 | .2 | 86.4 |
| | 10-11 | 7 | .1 | .1 | 86.5 |
| | 12-13 | 37 | .6 | .6 | 87.1 |
| | 14-15 | 113 | 1.9 | 1.9 | 89.0 |
| | 16-17 | 224 | 3.8 | 3.8 | 92.8 |
| | 18-20 | 300 | 5.1 | 5.1 | 97.9 |
| | 21-25 | 89 | 1.5 | 1.5 | 99.4 |
| | 26+ | 38 | .6 | .6 | 100.0 |
| | Total | 5928 | 100.0 | 100.0 | |

Age of first time use: Prescription medicines to get high

| | | Frequency | Percent | Valid Percent | Cumulative Percent |
|-------|-------------|-----------|---------|---------------|--------------------|
| Valid | No answer | 169 | 2.9 | 2.9 | 2.9 |
| | Did not use | 5360 | 90.4 | 90.4 | 93.3 |
| | Under 10 | 2 | .0 | .0 | 93.3 |
| | 12-13 | 19 | .3 | .3 | 93.6 |
| | 14-15 | 70 | 1.2 | 1.2 | 94.8 |
| | 16-17 | 136 | 2.3 | 2.3 | 97.1 |
| | 18-20 | 123 | 2.1 | 2.1 | 99.2 |
| | 21-25 | 38 | .6 | .6 | 99.8 |
| | 26+ | 11 | .2 | .2 | 100.0 |
| | Total | 5928 | 100.0 | 100.0 | |

Age of first time use: Over-the-counter medications to get high

| | | Frequency | Percent | Valid Percent | Cumulative Percent |
|-------|-------------|-----------|---------|---------------|--------------------|
| Valid | No answer | 179 | 3.0 | 3.0 | 3.0 |
| | Did not use | 5520 | 93.1 | 93.1 | 96.1 |
| | Under 10 | 1 | .0 | .0 | 96.2 |
| | 10-11 | 4 | .1 | .1 | 96.2 |
| | 12-13 | 11 | .2 | .2 | 96.4 |
| | 14-15 | 61 | 1.0 | 1.0 | 97.4 |
| | 16-17 | 76 | 1.3 | 1.3 | 98.7 |
| | 18-20 | 61 | 1.0 | 1.0 | 99.7 |
| | 21-25 | 12 | .2 | .2 | 99.9 |
| | 26+ | 3 | .1 | .1 | 100.0 |
| | Total | 5928 | 100.0 | 100.0 | |

Age of first time use: Methamphetamine

| | | Frequency | Percent | Valid Percent | Cumulative Percent |
|-------|-------------|-----------|---------|---------------|--------------------|
| Valid | No answer | 230 | 3.9 | 3.9 | 3.9 |
| | Did not use | 5607 | 94.6 | 94.6 | 98.5 |
| | Under 10 | 1 | .0 | .0 | 98.5 |
| | 10-11 | 2 | .0 | .0 | 98.5 |
| | 12-13 | 4 | .1 | .1 | 98.6 |
| | 14-15 | 10 | .2 | .2 | 98.8 |
| | 16-17 | 19 | .3 | .3 | 99.1 |
| | 18-20 | 29 | .5 | .5 | 99.6 |
| | 21-25 | 23 | .4 | .4 | 99.9 |
| | 26+ | 3 | .1 | .1 | 100.0 |
| | Total | 5928 | 100.0 | 100.0 | |

Alcohol use in the past 6 months

| | | Frequency | Percent | Valid Percent | Cumulative Percent |
|-------|-------|-----------|---------|---------------|--------------------|
| Valid | Yes | 4466 | 75.3 | 75.3 | 75.3 |
| | No | 1462 | 24.7 | 24.7 | 100.0 |
| | Total | 5928 | 100.0 | 100.0 | |

Consequences of alcohol use: Spouse, partner or parents worried or complained about your drinking

| | | Frequency | Percent | Valid Percent | Cumulative Percent |
|-------|-----------|-----------|---------|---------------|--------------------|
| Valid | No answer | 1457 | 24.6 | 24.6 | 24.6 |
| | Never | 3869 | 65.3 | 65.3 | 89.8 |
| | Once | 293 | 4.9 | 4.9 | 94.8 |
| | Twice | 140 | 2.4 | 2.4 | 97.1 |
| | 3-5 times | 108 | 1.8 | 1.8 | 99.0 |
| | 6-9 times | 29 | .5 | .5 | 99.5 |
| | 10+ times | 32 | .5 | .5 | 100.0 |
| | Total | 5928 | 100.0 | 100.0 | |

Consequences of alcohol use: Felt bad about your drinking

| | | Frequency | Percent | Valid Percent | Cumulative Percent |
|-------|-----------|-----------|---------|---------------|--------------------|
| Valid | No answer | 1469 | 24.8 | 24.8 | 24.8 |
| | Never | 3245 | 54.7 | 54.7 | 79.5 |
| | Once | 602 | 10.2 | 10.2 | 89.7 |
| | Twice | 276 | 4.7 | 4.7 | 94.3 |
| | 3-5 times | 226 | 3.8 | 3.8 | 98.1 |
| | 6-9 times | 55 | .9 | .9 | 99.1 |
| | 10+ times | 55 | .9 | .9 | 100.0 |
| | Total | 5928 | 100.0 | 100.0 | |

Consequences of alcohol use: Been unable to stop drinking when you wanted to

| | | Frequency | Percent | Valid Percent | Cumulative Percent |
|-------|-----------|-----------|---------|---------------|--------------------|
| Valid | No answer | 1477 | 24.9 | 24.9 | 24.9 |
| | Never | 4003 | 67.5 | 67.5 | 92.4 |
| | Once | 101 | 1.7 | 1.7 | 94.1 |
| | Twice | 70 | 1.2 | 1.2 | 95.3 |
| | 3-5 times | 75 | 1.3 | 1.3 | 96.6 |
| | 6-9 times | 40 | .7 | .7 | 97.3 |
| | 10+ times | 162 | 2.7 | 2.7 | 100.0 |
| | Total | 5928 | 100.0 | 100.0 | |

Consequences of alcohol use: Attended Alcoholics Anonymous

| | | Frequency | Percent | Valid Percent | Cumulative Percent |
|-------|-----------|-----------|---------|---------------|--------------------|
| Valid | No answer | 1475 | 24.9 | 24.9 | 24.9 |
| | Never | 4410 | 74.4 | 74.4 | 99.3 |
| | Once | 16 | .3 | .3 | 99.5 |
| | Twice | 6 | .1 | .1 | 99.6 |
| | 3-5 times | 14 | .2 | .2 | 99.9 |
| | 6-9 times | 1 | .0 | .0 | 99.9 |
| | 10+ times | 6 | .1 | .1 | 100.0 |
| | Total | 5928 | 100.0 | 100.0 | |

Consequences of alcohol use: Created problems between you and your spouse or partner

| | | Frequency | Percent | Valid Percent | Cumulative Percent |
|-------|-----------|-----------|---------|---------------|--------------------|
| Valid | No answer | 1471 | 24.8 | 24.8 | 24.8 |
| | Never | 3932 | 66.3 | 66.3 | 91.1 |
| | Once | 236 | 4.0 | 4.0 | 95.1 |
| | Twice | 138 | 2.3 | 2.3 | 97.5 |
| | 3-5 times | 93 | 1.6 | 1.6 | 99.0 |
| | 6-9 times | 27 | .5 | .5 | 99.5 |
| | 10+ times | 31 | .5 | .5 | 100.0 |
| | Total | 5928 | 100.0 | 100.0 | |

**Consequences of alcohol use: Gotten into trouble at work or school
because of drinking**

| | | Frequency | Percent | Valid Percent | Cumulative Percent |
|-------|-----------|-----------|---------|---------------|-----------------------|
| Valid | No answer | 1477 | 24.9 | 24.9 | 24.9 |
| | Never | 4222 | 71.2 | 71.2 | 96.1 |
| | Once | 154 | 2.6 | 2.6 | 98.7 |
| | Twice | 37 | .6 | .6 | 99.4 |
| | 3-5 times | 19 | .3 | .3 | 99.7 |
| | 6-9 times | 8 | .1 | .1 | 99.8 |
| | 10+ times | 11 | .2 | .2 | 100.0 |
| | Total | 5928 | 100.0 | 100.0 | |

**Consequences of alcohol use: Neglected your obligations, family, or work
due to drinking**

| | | Frequency | Percent | Valid Percent | Cumulative Percent |
|-------|-----------|-----------|---------|---------------|-----------------------|
| Valid | No answer | 1472 | 24.8 | 24.8 | 24.8 |
| | Never | 4260 | 71.9 | 71.9 | 96.7 |
| | Once | 83 | 1.4 | 1.4 | 98.1 |
| | Twice | 51 | .9 | .9 | 99.0 |
| | 3-5 times | 39 | .7 | .7 | 99.6 |
| | 6-9 times | 13 | .2 | .2 | 99.8 |
| | 10+ times | 10 | .2 | .2 | 100.0 |
| | Total | 5928 | 100.0 | 100.0 | |

Consequences of alcohol use: Gone to anyone for help to reduce your drinking

| | | Frequency | Percent | Valid Percent | Cumulative Percent |
|-------|-----------|-----------|---------|---------------|--------------------|
| Valid | No answer | 1465 | 24.7 | 24.7 | 24.7 |
| | Never | 4377 | 73.8 | 73.8 | 98.5 |
| | Once | 47 | .8 | .8 | 99.3 |
| | Twice | 16 | .3 | .3 | 99.6 |
| | 3-5 times | 13 | .2 | .2 | 99.8 |
| | 6-9 times | 2 | .0 | .0 | 99.9 |
| | 10+ times | 8 | .1 | .1 | 100.0 |
| | Total | 5928 | 100.0 | 100.0 | |

Consequences of alcohol use: Been in the hospital because of drinking

| | | Frequency | Percent | Valid Percent | Cumulative Percent |
|-------|-----------|-----------|---------|---------------|--------------------|
| Valid | No answer | 1471 | 24.8 | 24.8 | 24.8 |
| | Never | 4420 | 74.6 | 74.6 | 99.4 |
| | Once | 28 | .5 | .5 | 99.8 |
| | Twice | 5 | .1 | .1 | 99.9 |
| | 3-5 times | 1 | .0 | .0 | 99.9 |
| | 10+ times | 3 | .1 | .1 | 100.0 |
| | Total | 5928 | 100.0 | 100.0 | |

Consequences of alcohol use: Been arrested even for a few hours because of drinking

| | | Frequency | Percent | Valid Percent | Cumulative Percent |
|-------|-----------|-----------|---------|---------------|--------------------|
| Valid | No answer | 1470 | 24.8 | 24.8 | 24.8 |
| | Never | 4353 | 73.4 | 73.4 | 98.2 |
| | Once | 89 | 1.5 | 1.5 | 99.7 |
| | Twice | 8 | .1 | .1 | 99.9 |
| | 3-5 times | 5 | .1 | .1 | 99.9 |
| | 6-9 times | 1 | .0 | .0 | 100.0 |
| | 10+ times | 2 | .0 | .0 | 100.0 |
| | Total | 5928 | 100.0 | 100.0 | |

Consequences of alcohol use: Been arrested for drunk driving or driving after drinking

| | | Frequency | Percent | Valid Percent | Cumulative Percent |
|-------|-----------|-----------|---------|---------------|--------------------|
| Valid | No answer | 1479 | 24.9 | 24.9 | 24.9 |
| | Never | 4395 | 74.1 | 74.1 | 99.1 |
| | Once | 40 | .7 | .7 | 99.8 |
| | Twice | 9 | .2 | .2 | 99.9 |
| | 3-5 times | 2 | .0 | .0 | 99.9 |
| | 6-9 times | 2 | .0 | .0 | 100.0 |
| | 10+ times | 1 | .0 | .0 | 100.0 |
| | Total | 5928 | 100.0 | 100.0 | |

Consequences of alcohol use: Driven a car while under the influence

| | | Frequency | Percent | Valid Percent | Cumulative Percent |
|-------|-----------|-----------|---------|---------------|--------------------|
| Valid | No answer | 1468 | 24.8 | 24.8 | 24.8 |
| | Never | 3547 | 59.8 | 59.8 | 84.6 |
| | Once | 407 | 6.9 | 6.9 | 91.5 |
| | Twice | 215 | 3.6 | 3.6 | 95.1 |
| | 3-5 times | 171 | 2.9 | 2.9 | 98.0 |
| | 6-9 times | 40 | .7 | .7 | 98.7 |
| | 10+ times | 80 | 1.3 | 1.3 | 100.0 |
| | Total | 5928 | 100.0 | 100.0 | |

Consequences of alcohol use: Gotten into physical fights when drinking

| | | Frequency | Percent | Valid Percent | Cumulative Percent |
|-------|-----------|-----------|---------|---------------|--------------------|
| Valid | No answer | 1510 | 25.5 | 25.5 | 25.5 |
| | Never | 4157 | 70.1 | 70.1 | 95.6 |
| | Once | 159 | 2.7 | 2.7 | 98.3 |
| | Twice | 58 | 1.0 | 1.0 | 99.3 |
| | 3-5 times | 25 | .4 | .4 | 99.7 |
| | 6-9 times | 10 | .2 | .2 | 99.8 |
| | 10+ times | 9 | .2 | .2 | 100.0 |
| | Total | 5928 | 100.0 | 100.0 | |

Consequences of alcohol use: Experienced unwanted sexual attention

| | | Frequency | Percent | Valid Percent | Cumulative Percent |
|-------|-----------|-----------|---------|---------------|--------------------|
| Valid | No answer | 1479 | 24.9 | 24.9 | 24.9 |
| | Never | 3951 | 66.6 | 66.6 | 91.6 |
| | Once | 258 | 4.4 | 4.4 | 96.0 |
| | Twice | 142 | 2.4 | 2.4 | 98.3 |
| | 3-5 times | 65 | 1.1 | 1.1 | 99.4 |
| | 6-9 times | 18 | .3 | .3 | 99.7 |
| | 10+ times | 15 | .3 | .3 | 100.0 |
| | Total | 5928 | 100.0 | 100.0 | |

Consequences of alcohol use: Engaged in risky sexual behavior

| | | Frequency | Percent | Valid Percent | Cumulative Percent |
|-------|-----------|-----------|---------|---------------|--------------------|
| Valid | No answer | 1472 | 24.8 | 24.8 | 24.8 |
| | Never | 3833 | 64.7 | 64.7 | 89.5 |
| | Once | 268 | 4.5 | 4.5 | 94.0 |
| | Twice | 181 | 3.1 | 3.1 | 97.1 |
| | 3-5 times | 96 | 1.6 | 1.6 | 98.7 |
| | 6-9 times | 38 | .6 | .6 | 99.3 |
| | 10+ times | 40 | .7 | .7 | 100.0 |
| | Total | 5928 | 100.0 | 100.0 | |

Consequences of alcohol use: Missed class or assignments

| | | Frequency | Percent | Valid Percent | Cumulative Percent |
|-------|-----------|-----------|---------|---------------|--------------------|
| Valid | No answer | 1472 | 24.8 | 24.8 | 24.8 |
| | Never | 3730 | 62.9 | 62.9 | 87.8 |
| | Once | 316 | 5.3 | 5.3 | 93.1 |
| | Twice | 195 | 3.3 | 3.3 | 96.4 |
| | 3-5 times | 134 | 2.3 | 2.3 | 98.6 |
| | 6-9 times | 41 | .7 | .7 | 99.3 |
| | 10+ times | 40 | .7 | .7 | 100.0 |
| | Total | 5928 | 100.0 | 100.0 | |

Consequences of alcohol use: Blacked out

| | | Frequency | Percent | Valid Percent | Cumulative Percent |
|-------|-----------|-----------|---------|---------------|--------------------|
| Valid | No answer | 1476 | 24.9 | 24.9 | 24.9 |
| | Never | 3276 | 55.3 | 55.3 | 80.2 |
| | Once | 504 | 8.5 | 8.5 | 88.7 |
| | Twice | 287 | 4.8 | 4.8 | 93.5 |
| | 3-5 times | 224 | 3.8 | 3.8 | 97.3 |
| | 6-9 times | 71 | 1.2 | 1.2 | 98.5 |
| | 10+ times | 90 | 1.5 | 1.5 | 100.0 |
| | Total | 5928 | 100.0 | 100.0 | |

Any drug use in the past year

| | | Frequency | Percent | Valid Percent | Cumulative Percent |
|-------|-----------|-----------|---------|---------------|--------------------|
| Valid | No answer | 1 | .0 | .0 | .0 |
| | Yes | 1997 | 33.7 | 33.7 | 33.7 |
| | No | 3930 | 66.3 | 66.3 | 100.0 |
| | Total | 5928 | 100.0 | 100.0 | |

Consequences of drug use: Abused more than one drug at a time

| | | Frequency | Percent | Valid Percent | Cumulative Percent |
|-------|-----------|-----------|---------|---------------|--------------------|
| Valid | No answer | 3902 | 65.8 | 65.8 | 65.8 |
| | Never | 1524 | 25.7 | 25.7 | 91.5 |
| | Once | 115 | 1.9 | 1.9 | 93.5 |
| | Twice | 80 | 1.3 | 1.3 | 94.8 |
| | 3-5 times | 131 | 2.2 | 2.2 | 97.0 |
| | 6-9 times | 31 | .5 | .5 | 97.6 |
| | 10+ times | 145 | 2.4 | 2.4 | 100.0 |
| | Total | 5928 | 100.0 | 100.0 | |

Consequences of drug use: Been unable to stop using drugs when you wanted to

| | | Frequency | Percent | Valid Percent | Cumulative Percent |
|-------|-----------|-----------|---------|---------------|--------------------|
| Valid | No answer | 3911 | 66.0 | 66.0 | 66.0 |
| | Never | 1835 | 31.0 | 31.0 | 96.9 |
| | Once | 35 | .6 | .6 | 97.5 |
| | Twice | 13 | .2 | .2 | 97.7 |
| | 3-5 times | 25 | .4 | .4 | 98.2 |
| | 6-9 times | 11 | .2 | .2 | 98.3 |
| | 10+ times | 98 | 1.7 | 1.7 | 100.0 |
| | Total | 5928 | 100.0 | 100.0 | |

Consequences of drug use: Had blackouts or flashbacks as a result of drug use

| | | Frequency | Percent | Valid Percent | Cumulative Percent |
|-------|-----------|-----------|---------|---------------|--------------------|
| Valid | No answer | 3911 | 66.0 | 66.0 | 66.0 |
| | Never | 1819 | 30.7 | 30.7 | 96.7 |
| | Once | 75 | 1.3 | 1.3 | 97.9 |
| | Twice | 48 | .8 | .8 | 98.7 |
| | 3-5 times | 47 | .8 | .8 | 99.5 |
| | 6-9 times | 12 | .2 | .2 | 99.7 |
| | 10+ times | 16 | .3 | .3 | 100.0 |
| | Total | 5928 | 100.0 | 100.0 | |

Consequences of drug use: Felt bad or guilty about your drug use

| | | Frequency | Percent | Valid Percent | Cumulative Percent |
|-------|-----------|-----------|---------|---------------|--------------------|
| Valid | No answer | 3912 | 66.0 | 66.0 | 66.0 |
| | Never | 1496 | 25.2 | 25.2 | 91.2 |
| | Once | 198 | 3.3 | 3.3 | 94.6 |
| | Twice | 118 | 2.0 | 2.0 | 96.6 |
| | 3-5 times | 95 | 1.6 | 1.6 | 98.2 |
| | 6-9 times | 22 | .4 | .4 | 98.5 |
| | 10+ times | 87 | 1.5 | 1.5 | 100.0 |
| | Total | 5928 | 100.0 | 100.0 | |

Consequences of drug use: Had your spouse or partner complain about your involvement with drugs

| | | Frequency | Percent | Valid Percent | Cumulative Percent |
|-------|-----------|-----------|---------|---------------|--------------------|
| Valid | No answer | 3908 | 65.9 | 65.9 | 65.9 |
| | Never | 1829 | 30.9 | 30.9 | 96.8 |
| | Once | 73 | 1.2 | 1.2 | 98.0 |
| | Twice | 41 | .7 | .7 | 98.7 |
| | 3-5 times | 38 | .6 | .6 | 99.3 |
| | 6-9 times | 11 | .2 | .2 | 99.5 |
| | 10+ times | 28 | .5 | .5 | 100.0 |
| | Total | 5928 | 100.0 | 100.0 | |

Consequences of drug use: Neglected your family because of your use of drugs

| | | Frequency | Percent | Valid Percent | Cumulative Percent |
|-------|-----------|-----------|---------|---------------|--------------------|
| Valid | No answer | 3913 | 66.0 | 66.0 | 66.0 |
| | Never | 1918 | 32.4 | 32.4 | 98.4 |
| | Once | 20 | .3 | .3 | 98.7 |
| | Twice | 27 | .5 | .5 | 99.2 |
| | 3-5 times | 20 | .3 | .3 | 99.5 |
| | 6-9 times | 5 | .1 | .1 | 99.6 |
| | 10+ times | 25 | .4 | .4 | 100.0 |
| | Total | 5928 | 100.0 | 100.0 | |

Consequences of drug use: Engaged in illegal activities in order to obtain drugs

| | | Frequency | Percent | Valid Percent | Cumulative Percent |
|-------|-----------|-----------|---------|---------------|--------------------|
| Valid | No answer | 3912 | 66.0 | 66.0 | 66.0 |
| | Never | 1880 | 31.7 | 31.7 | 97.7 |
| | Once | 27 | .5 | .5 | 98.2 |
| | Twice | 27 | .5 | .5 | 98.6 |
| | 3-5 times | 22 | .4 | .4 | 99.0 |
| | 6-9 times | 11 | .2 | .2 | 99.2 |
| | 10+ times | 49 | .8 | .8 | 100.0 |
| | Total | 5928 | 100.0 | 100.0 | |

Consequences of drug use: Gotten into physical fights because you were using drugs

| | | Frequency | Percent | Valid Percent | Cumulative Percent |
|-------|-----------|-----------|---------|---------------|--------------------|
| Valid | No answer | 3912 | 66.0 | 66.0 | 66.0 |
| | Never | 1979 | 33.4 | 33.4 | 99.4 |
| | Once | 11 | .2 | .2 | 99.6 |
| | Twice | 10 | .2 | .2 | 99.7 |
| | 3-5 times | 10 | .2 | .2 | 99.9 |
| | 6-9 times | 1 | .0 | .0 | 99.9 |
| | 10+ times | 5 | .1 | .1 | 100.0 |
| | Total | 5928 | 100.0 | 100.0 | |

Consequences of drug use: Experienced withdrawal symptoms when you stopped taking drugs

| | | Frequency | Percent | Valid Percent | Cumulative Percent |
|-------|-----------|-----------|---------|---------------|--------------------|
| Valid | No answer | 3912 | 66.0 | 66.0 | 66.0 |
| | Never | 1852 | 31.2 | 31.2 | 97.2 |
| | Once | 36 | .6 | .6 | 97.8 |
| | Twice | 42 | .7 | .7 | 98.5 |
| | 3-5 times | 50 | .8 | .8 | 99.4 |
| | 6-9 times | 11 | .2 | .2 | 99.6 |
| | 10+ times | 25 | .4 | .4 | 100.0 |
| | Total | 5928 | 100.0 | 100.0 | |

Consequences of drug use: Had medical problems as a result of your drug use

| | | Frequency | Percent | Valid Percent | Cumulative Percent |
|-------|-----------|-----------|---------|---------------|--------------------|
| Valid | No answer | 3913 | 66.0 | 66.0 | 66.0 |
| | Never | 1930 | 32.6 | 32.6 | 98.6 |
| | Once | 31 | .5 | .5 | 99.1 |
| | Twice | 21 | .4 | .4 | 99.4 |
| | 3-5 times | 14 | .2 | .2 | 99.7 |
| | 6-9 times | 7 | .1 | .1 | 99.8 |
| | 10+ times | 12 | .2 | .2 | 100.0 |
| | Total | 5928 | 100.0 | 100.0 | |

Consequences of drug use: Driven a car while under the influence of drugs

| | | Frequency | Percent | Valid Percent | Cumulative Percent |
|-------|-----------|-----------|---------|---------------|--------------------|
| Valid | No answer | 3916 | 66.1 | 66.1 | 66.1 |
| | Never | 1514 | 25.5 | 25.5 | 91.6 |
| | Once | 119 | 2.0 | 2.0 | 93.6 |
| | Twice | 81 | 1.4 | 1.4 | 95.0 |
| | 3-5 times | 83 | 1.4 | 1.4 | 96.4 |
| | 6-9 times | 33 | .6 | .6 | 96.9 |
| | 10+ times | 182 | 3.1 | 3.1 | 100.0 |
| | Total | 5928 | 100.0 | 100.0 | |

Consequences of drug use: Gotten in trouble at work because of drug use

| | | Frequency | Percent | Valid Percent | Cumulative Percent |
|-------|-----------|-----------|---------|---------------|--------------------|
| Valid | No answer | 3917 | 66.1 | 66.1 | 66.1 |
| | Never | 1974 | 33.3 | 33.3 | 99.4 |
| | Once | 23 | .4 | .4 | 99.8 |
| | Twice | 6 | .1 | .1 | 99.9 |
| | 3-5 times | 4 | .1 | .1 | 99.9 |
| | 10+ times | 4 | .1 | .1 | 100.0 |
| | Total | 5928 | 100.0 | 100.0 | |

Consequences of drug use: Been in very vulnerable situations

| | | Frequency | Percent | Valid Percent | Cumulative Percent |
|-------|-----------|-----------|---------|---------------|--------------------|
| Valid | No answer | 3911 | 66.0 | 66.0 | 66.0 |
| | Never | 1913 | 32.3 | 32.3 | 98.2 |
| | Once | 42 | .7 | .7 | 99.0 |
| | Twice | 29 | .5 | .5 | 99.4 |
| | 3-5 times | 17 | .3 | .3 | 99.7 |
| | 6-9 times | 7 | .1 | .1 | 99.8 |
| | 10+ times | 9 | .2 | .2 | 100.0 |
| | Total | 5928 | 100.0 | 100.0 | |

Consequences of drug use: Engaged in risky sexual behavior

| | | Frequency | Percent | Valid Percent | Cumulative Percent |
|-------|-----------|-----------|---------|---------------|--------------------|
| Valid | No answer | 3913 | 66.0 | 66.0 | 66.0 |
| | Never | 1883 | 31.8 | 31.8 | 97.8 |
| | Once | 47 | .8 | .8 | 98.6 |
| | Twice | 44 | .7 | .7 | 99.3 |
| | 3-5 times | 19 | .3 | .3 | 99.6 |
| | 6-9 times | 8 | .1 | .1 | 99.8 |
| | 10+ times | 14 | .2 | .2 | 100.0 |
| | Total | 5928 | 100.0 | 100.0 | |

Consequences of drug use: Failed a class because of drug use

| | | Frequency | Percent | Valid Percent | Cumulative Percent |
|-------|-----------|-----------|---------|---------------|--------------------|
| Valid | No answer | 3910 | 66.0 | 66.0 | 66.0 |
| | Never | 1985 | 33.5 | 33.5 | 99.4 |
| | Once | 17 | .3 | .3 | 99.7 |
| | Twice | 7 | .1 | .1 | 99.8 |
| | 3-5 times | 6 | .1 | .1 | 99.9 |
| | 6-9 times | 2 | .0 | .0 | 100.0 |
| | 10+ times | 1 | .0 | .0 | 100.0 |
| | Total | 5928 | 100.0 | 100.0 | |

Consequences of drug use: Missed class or assignments due to drug use

| | | Frequency | Percent | Valid Percent | Cumulative Percent |
|-------|-----------|-----------|---------|---------------|--------------------|
| Valid | No answer | 3910 | 66.0 | 66.0 | 66.0 |
| | Never | 1815 | 30.6 | 30.6 | 96.6 |
| | Once | 75 | 1.3 | 1.3 | 97.8 |
| | Twice | 47 | .8 | .8 | 98.6 |
| | 3-5 times | 38 | .6 | .6 | 99.3 |
| | 6-9 times | 18 | .3 | .3 | 99.6 |
| | 10+ times | 25 | .4 | .4 | 100.0 |
| | Total | 5928 | 100.0 | 100.0 | |

Perception of peer approval/disapproval: Trying marijuana once or twice

| | | Frequency | Percent | Valid Percent | Cumulative Percent |
|-------|-------------------------------|-----------|---------|---------------|--------------------|
| Valid | No answer | 75 | 1.3 | 1.3 | 1.3 |
| | Strongly approve | 802 | 13.5 | 13.5 | 14.8 |
| | Somewhat approve | 2060 | 34.8 | 34.8 | 49.5 |
| | Neither approve or disapprove | 1666 | 28.1 | 28.1 | 77.6 |
| | Somewhat disapprove | 714 | 12.0 | 12.0 | 89.7 |
| | Strongly disapprove | 611 | 10.3 | 10.3 | 100.0 |
| | Total | 5928 | 100.0 | 100.0 | |

Perception of peer approval/disapproval: Smoking marijuana occasionally

| | | Frequency | Percent | Valid Percent | Cumulative Percent |
|-------|-------------------------------|-----------|---------|---------------|--------------------|
| Valid | No answer | 83 | 1.4 | 1.4 | 1.4 |
| | Strongly approve | 427 | 7.2 | 7.2 | 8.6 |
| | Somewhat approve | 1696 | 28.6 | 28.6 | 37.2 |
| | Neither approve or disapprove | 1727 | 29.1 | 29.1 | 66.3 |
| | Somewhat disapprove | 1118 | 18.9 | 18.9 | 85.2 |
| | Strongly disapprove | 877 | 14.8 | 14.8 | 100.0 |
| | Total | 5928 | 100.0 | 100.0 | |

Perception of peer approval/disapproval: Smoking marijuana regularly

| | | Frequency | Percent | Valid Percent | Cumulative Percent |
|-------|-------------------------------|-----------|---------|---------------|--------------------|
| Valid | No answer | 91 | 1.5 | 1.5 | 1.5 |
| | Strongly approve | 208 | 3.5 | 3.5 | 5.0 |
| | Somewhat approve | 766 | 12.9 | 12.9 | 18.0 |
| | Neither approve or disapprove | 1473 | 24.8 | 24.8 | 42.8 |
| | Somewhat disapprove | 1719 | 29.0 | 29.0 | 71.8 |
| | Strongly disapprove | 1671 | 28.2 | 28.2 | 100.0 |
| | Total | 5928 | 100.0 | 100.0 | |

Perception of peer approval/disapproval: Trying cocaine once or twice

| | | Frequency | Percent | Valid Percent | Cumulative Percent |
|-------|-------------------------------|-----------|---------|---------------|--------------------|
| Valid | No answer | 85 | 1.4 | 1.4 | 1.4 |
| | Strongly approve | 71 | 1.2 | 1.2 | 2.6 |
| | Somewhat approve | 365 | 6.2 | 6.2 | 8.8 |
| | Neither approve or disapprove | 971 | 16.4 | 16.4 | 25.2 |
| | Somewhat disapprove | 1708 | 28.8 | 28.8 | 54.0 |
| | Strongly disapprove | 2728 | 46.0 | 46.0 | 100.0 |
| | Total | 5928 | 100.0 | 100.0 | |

Perception of peer approval/disapproval: Taking cocaine regularly

| | | Frequency | Percent | Valid Percent | Cumulative Percent |
|-------|-------------------------------|-----------|---------|---------------|--------------------|
| Valid | No answer | 94 | 1.6 | 1.6 | 1.6 |
| | Strongly approve | 49 | .8 | .8 | 2.4 |
| | Somewhat approve | 89 | 1.5 | 1.5 | 3.9 |
| | Neither approve or disapprove | 623 | 10.5 | 10.5 | 14.4 |
| | Somewhat disapprove | 889 | 15.0 | 15.0 | 29.4 |
| | Strongly disapprove | 4184 | 70.6 | 70.6 | 100.0 |
| | Total | 5928 | 100.0 | 100.0 | |

Perception of peer approval/disapproval: Trying LSD once or twice

| | | Frequency | Percent | Valid Percent | Cumulative Percent |
|-------|-------------------------------|-----------|---------|---------------|--------------------|
| Valid | No answer | 86 | 1.5 | 1.5 | 1.5 |
| | Strongly approve | 84 | 1.4 | 1.4 | 2.9 |
| | Somewhat approve | 350 | 5.9 | 5.9 | 8.8 |
| | Neither approve or disapprove | 984 | 16.6 | 16.6 | 25.4 |
| | Somewhat disapprove | 1493 | 25.2 | 25.2 | 50.6 |
| | Strongly disapprove | 2931 | 49.4 | 49.4 | 100.0 |
| | Total | 5928 | 100.0 | 100.0 | |

Perception of peer approval/disapproval: Taking LSD regularly

| | | Frequency | Percent | Valid Percent | Cumulative Percent |
|-------|-------------------------------|-----------|---------|---------------|--------------------|
| Valid | No answer | 92 | 1.6 | 1.6 | 1.6 |
| | Strongly approve | 57 | 1.0 | 1.0 | 2.5 |
| | Somewhat approve | 82 | 1.4 | 1.4 | 3.9 |
| | Neither approve or disapprove | 648 | 10.9 | 10.9 | 14.8 |
| | Somewhat disapprove | 869 | 14.7 | 14.7 | 29.5 |
| | Strongly disapprove | 4180 | 70.5 | 70.5 | 100.0 |
| | Total | 5928 | 100.0 | 100.0 | |

Perception of peer approval/disapproval: Trying amphetamine once or twice

| | | Frequency | Percent | Valid Percent | Cumulative Percent |
|-------|-------------------------------|-----------|---------|---------------|--------------------|
| Valid | No answer | 96 | 1.6 | 1.6 | 1.6 |
| | Strongly approve | 88 | 1.5 | 1.5 | 3.1 |
| | Somewhat approve | 324 | 5.5 | 5.5 | 8.6 |
| | Neither approve or disapprove | 982 | 16.6 | 16.6 | 25.1 |
| | Somewhat disapprove | 1366 | 23.0 | 23.0 | 48.2 |
| | Strongly disapprove | 3072 | 51.8 | 51.8 | 100.0 |
| | Total | 5928 | 100.0 | 100.0 | |

Perception of peer approval/disapproval: Taking amphetamine regularly

| | | Frequency | Percent | Valid Percent | Cumulative Percent |
|-------|-------------------------------|-----------|---------|---------------|--------------------|
| Valid | No answer | 142 | 2.4 | 2.4 | 2.4 |
| | Strongly approve | 65 | 1.1 | 1.1 | 3.5 |
| | Somewhat approve | 127 | 2.1 | 2.1 | 5.6 |
| | Neither approve or disapprove | 719 | 12.1 | 12.1 | 17.8 |
| | Somewhat disapprove | 869 | 14.7 | 14.7 | 32.4 |
| | Strongly disapprove | 4006 | 67.6 | 67.6 | 100.0 |
| | Total | 5928 | 100.0 | 100.0 | |

Perception of peer approval/disapproval: Taking one or two drinks of an alcoholic beverage nearly every day

| | | Frequency | Percent | Valid Percent | Cumulative Percent |
|-------|-------------------------------|-----------|---------|---------------|--------------------|
| Valid | No answer | 90 | 1.5 | 1.5 | 1.5 |
| | Strongly approve | 671 | 11.3 | 11.3 | 12.8 |
| | Somewhat approve | 1372 | 23.1 | 23.1 | 36.0 |
| | Neither approve or disapprove | 1823 | 30.8 | 30.8 | 66.7 |
| | Somewhat disapprove | 1181 | 19.9 | 19.9 | 86.7 |
| | Strongly disapprove | 791 | 13.3 | 13.3 | 100.0 |
| | Total | 5928 | 100.0 | 100.0 | |

Perception of peer approval/disapproval: Taking three or four drinks nearly every day

| | | Frequency | Percent | Valid Percent | Cumulative Percent |
|-------|-------------------------------|-----------|---------|---------------|--------------------|
| Valid | No answer | 92 | 1.6 | 1.6 | 1.6 |
| | Strongly approve | 273 | 4.6 | 4.6 | 6.2 |
| | Somewhat approve | 760 | 12.8 | 12.8 | 19.0 |
| | Neither approve or disapprove | 1401 | 23.6 | 23.6 | 42.6 |
| | Somewhat disapprove | 1567 | 26.4 | 26.4 | 69.0 |
| | Strongly disapprove | 1835 | 31.0 | 31.0 | 100.0 |
| | Total | 5928 | 100.0 | 100.0 | |

Perception of peer approval/disapproval: Having five or more drinks in one sitting

| | | Frequency | Percent | Valid Percent | Cumulative Percent |
|-------|-------------------------------|-----------|---------|---------------|--------------------|
| Valid | No answer | 101 | 1.7 | 1.7 | 1.7 |
| | Strongly approve | 539 | 9.1 | 9.1 | 10.8 |
| | Somewhat approve | 1011 | 17.1 | 17.1 | 27.9 |
| | Neither approve or disapprove | 1553 | 26.2 | 26.2 | 54.0 |
| | Somewhat disapprove | 1088 | 18.4 | 18.4 | 72.4 |
| | Strongly disapprove | 1636 | 27.6 | 27.6 | 100.0 |
| | Total | 5928 | 100.0 | 100.0 | |

Perception of peer approval/disapproval: Taking steroids for body building or improved athletic performance

| | | Frequency | Percent | Valid Percent | Cumulative Percent |
|-------|-------------------------------|-----------|---------|---------------|--------------------|
| Valid | No answer | 109 | 1.8 | 1.8 | 1.8 |
| | Strongly approve | 80 | 1.3 | 1.3 | 3.2 |
| | Somewhat approve | 348 | 5.9 | 5.9 | 9.1 |
| | Neither approve or disapprove | 1340 | 22.6 | 22.6 | 31.7 |
| | Somewhat disapprove | 1496 | 25.2 | 25.2 | 56.9 |
| | Strongly disapprove | 2555 | 43.1 | 43.1 | 100.0 |
| | Total | 5928 | 100.0 | 100.0 | |

Age

| | | Frequency | Percent | Valid Percent | Cumulative Percent |
|-------|-------------|-----------|---------|---------------|--------------------|
| Valid | No answer | 5 | .1 | .1 | .1 |
| | 21 or older | 3403 | 57.4 | 57.4 | 57.5 |
| | Under 21 | 2520 | 42.5 | 42.5 | 100.0 |
| | Total | 5928 | 100.0 | 100.0 | |

Students under 21: 1st easiest way to get alcohol

| | | Frequency | Percent | Valid Percent | Cumulative Percent |
|-------|---|-----------|---------|---------------|-----------------------|
| Valid | No answer | 3696 | 62.3 | 62.3 | 62.3 |
| | Older friends | 1225 | 20.7 | 20.7 | 83.0 |
| | Older siblings | 84 | 1.4 | 1.4 | 84.4 |
| | On-campus parties | 162 | 2.7 | 2.7 | 87.2 |
| | Fraternity or sorority houses | 215 | 3.6 | 3.6 | 90.8 |
| | Off-campus private parties | 255 | 4.3 | 4.3 | 95.1 |
| | Someone else on campus | 111 | 1.9 | 1.9 | 97.0 |
| | Buying it yourself | 62 | 1.0 | 1.0 | 98.0 |
| | Stealing it from store | 3 | .1 | .1 | 98.1 |
| | From parents without their knowledge | 20 | .3 | .3 | 98.4 |
| | From parents with their knowledge | 95 | 1.6 | 1.6 | 100.0 |
| | Total | 5928 | 100.0 | 100.0 | |

Students under 21: 2nd easiest way to get alcohol

| | | Frequency | Percent | Valid Percent | Cumulative Percent |
|-------|---|-----------|---------|---------------|-----------------------|
| Valid | No answer | 3738 | 63.1 | 63.1 | 63.1 |
| | Older friends | 430 | 7.3 | 7.3 | 70.3 |
| | Older siblings | 254 | 4.3 | 4.3 | 74.6 |
| | On-campus parties | 320 | 5.4 | 5.4 | 80.0 |
| | Fraternity or sorority houses | 236 | 4.0 | 4.0 | 84.0 |
| | Off-campus private parties | 564 | 9.5 | 9.5 | 93.5 |
| | Someone else on campus | 210 | 3.5 | 3.5 | 97.0 |
| | Buying it yourself | 31 | .5 | .5 | 97.6 |
| | Stealing it from store | 7 | .1 | .1 | 97.7 |
| | From parents without their knowledge | 49 | .8 | .8 | 98.5 |
| | From parents with their knowledge | 89 | 1.5 | 1.5 | 100.0 |
| | Total | 5928 | 100.0 | 100.0 | |

Students under 21: 3rd easiest way to get alcohol

| | | Frequency | Percent | Valid Percent | Cumulative Percent |
|-------|--------------------------------------|-----------|---------|---------------|--------------------|
| Valid | No answer | 3779 | 63.7 | 63.7 | 63.7 |
| | Older friends | 258 | 4.4 | 4.4 | 68.1 |
| | Older siblings | 186 | 3.1 | 3.1 | 71.2 |
| | On-campus parties | 307 | 5.2 | 5.2 | 76.4 |
| | Fraternity or sorority houses | 229 | 3.9 | 3.9 | 80.3 |
| | Off-campus private parties | 449 | 7.6 | 7.6 | 87.9 |
| | Someone else on campus | 386 | 6.5 | 6.5 | 94.4 |
| | Buying it yourself | 77 | 1.3 | 1.3 | 95.7 |
| | Stealing it from store | 12 | .2 | .2 | 95.9 |
| | From parents without their knowledge | 80 | 1.3 | 1.3 | 97.2 |
| | From parents with their knowledge | 165 | 2.8 | 2.8 | 100.0 |
| | Total | 5928 | 100.0 | 100.0 | |

Students under 21: Bought alcohol

| | | Frequency | Percent | Valid Percent | Cumulative Percent |
|-------|-----------|-----------|---------|---------------|--------------------|
| Valid | No answer | 3192 | 53.8 | 53.8 | 53.8 |
| | Yes | 303 | 5.1 | 5.1 | 59.0 |
| | No | 2433 | 41.0 | 41.0 | 100.0 |
| | Total | 5928 | 100.0 | 100.0 | |

Students under 21: Most common method to purchase alcohol

| | | Frequency | Percent | Valid Percent | Cumulative Percent |
|-------|------------------------------------|-----------|---------|---------------|--------------------|
| Valid | No answer | 5590 | 94.3 | 94.3 | 94.3 |
| | Used a fake ID | 66 | 1.1 | 1.1 | 95.4 |
| | Used someone else's ID | 79 | 1.3 | 1.3 | 96.7 |
| | Bought alcohol without using an ID | 193 | 3.3 | 3.3 | 100.0 |
| | Total | 5928 | 100.0 | 100.0 | |

Students under 21: Easiest place to purchase alcohol

| | | Frequency | Percent | Valid Percent | Cumulative Percent |
|-------|------------------------|-----------|---------|---------------|--------------------|
| Valid | No answer | 5594 | 94.4 | 94.4 | 94.4 |
| | Bar | 80 | 1.3 | 1.3 | 95.7 |
| | Restaurant | 49 | .8 | .8 | 96.5 |
| | Grocery store | 35 | .6 | .6 | 97.1 |
| | Discount store | 17 | .3 | .3 | 97.4 |
| | Convenience store | 36 | .6 | .6 | 98.0 |
| | Drug store | 18 | .3 | .3 | 98.3 |
| | Liquor store | 94 | 1.6 | 1.6 | 99.9 |
| | Internet | 4 | .1 | .1 | 100.0 |
| | Winery or microbrewery | 1 | .0 | .0 | 100.0 |
| | Total | 5928 | 100.0 | 100.0 | |

Reasons for drinking: To experiment

| | | Frequency | Percent | Valid Percent | Cumulative Percent |
|-------|-----------|-----------|---------|---------------|--------------------|
| Valid | No answer | 98 | 1.7 | 1.7 | 1.7 |
| | Yes | 1271 | 21.4 | 21.4 | 23.1 |
| | No | 4469 | 75.4 | 75.4 | 98.5 |
| | Unsure | 90 | 1.5 | 1.5 | 100.0 |
| | Total | 5928 | 100.0 | 100.0 | |

Reasons for drinking: Because I am hooked

| | | Frequency | Percent | Valid Percent | Cumulative Percent |
|-------|-----------|-----------|---------|---------------|--------------------|
| Valid | No answer | 109 | 1.8 | 1.8 | 1.8 |
| | Yes | 136 | 2.3 | 2.3 | 4.1 |
| | No | 5621 | 94.8 | 94.8 | 99.0 |
| | Unsure | 62 | 1.0 | 1.0 | 100.0 |
| | Total | 5928 | 100.0 | 100.0 | |

Reasons for drinking: To relax or relieve tension

| | | Frequency | Percent | Valid Percent | Cumulative Percent |
|-------|-----------|-----------|---------|---------------|--------------------|
| Valid | No answer | 96 | 1.6 | 1.6 | 1.6 |
| | Yes | 2972 | 50.1 | 50.1 | 51.8 |
| | No | 2806 | 47.3 | 47.3 | 99.1 |
| | Unsure | 54 | .9 | .9 | 100.0 |
| | Total | 5928 | 100.0 | 100.0 | |

Reasons for drinking: To feel good or get high

| | | Frequency | Percent | Valid Percent | Cumulative Percent |
|-------|-----------|-----------|---------|---------------|--------------------|
| Valid | No answer | 105 | 1.8 | 1.8 | 1.8 |
| | Yes | 1989 | 33.6 | 33.6 | 35.3 |
| | No | 3772 | 63.6 | 63.6 | 99.0 |
| | Unsure | 62 | 1.0 | 1.0 | 100.0 |
| | Total | 5928 | 100.0 | 100.0 | |

Reasons for drinking: To seek deeper insights and understanding

| | | Frequency | Percent | Valid Percent | Cumulative Percent |
|-------|-----------|-----------|---------|---------------|--------------------|
| Valid | No answer | 113 | 1.9 | 1.9 | 1.9 |
| | Yes | 323 | 5.4 | 5.4 | 7.4 |
| | No | 5417 | 91.4 | 91.4 | 98.7 |
| | Unsure | 75 | 1.3 | 1.3 | 100.0 |
| | Total | 5928 | 100.0 | 100.0 | |

Reasons for drinking: To have a good time with friends

| | | Frequency | Percent | Valid Percent | Cumulative Percent |
|-------|-----------|-----------|---------|---------------|--------------------|
| Valid | No answer | 85 | 1.4 | 1.4 | 1.4 |
| | Yes | 3815 | 64.4 | 64.4 | 65.8 |
| | No | 1989 | 33.6 | 33.6 | 99.3 |
| | Unsure | 39 | .7 | .7 | 100.0 |
| | Total | 5928 | 100.0 | 100.0 | |

Reasons for drinking: To fit in with a group I like

| | | Frequency | Percent | Valid Percent | Cumulative Percent |
|-------|-----------|-----------|---------|---------------|--------------------|
| Valid | No answer | 101 | 1.7 | 1.7 | 1.7 |
| | Yes | 614 | 10.4 | 10.4 | 12.1 |
| | No | 5152 | 86.9 | 86.9 | 99.0 |
| | Unsure | 61 | 1.0 | 1.0 | 100.0 |
| | Total | 5928 | 100.0 | 100.0 | |

Reasons for drinking: Because of boredom

| | | Frequency | Percent | Valid Percent | Cumulative Percent |
|-------|-----------|-----------|---------|---------------|--------------------|
| Valid | No answer | 96 | 1.6 | 1.6 | 1.6 |
| | Yes | 1091 | 18.4 | 18.4 | 20.0 |
| | No | 4676 | 78.9 | 78.9 | 98.9 |
| | Unsure | 65 | 1.1 | 1.1 | 100.0 |
| | Total | 5928 | 100.0 | 100.0 | |

Reasons for drinking: Because of anger or frustration

| | | Frequency | Percent | Valid Percent | Cumulative Percent |
|-------|-----------|-----------|---------|---------------|--------------------|
| Valid | No answer | 94 | 1.6 | 1.6 | 1.6 |
| | Yes | 953 | 16.1 | 16.1 | 17.7 |
| | No | 4836 | 81.6 | 81.6 | 99.2 |
| | Unsure | 45 | .8 | .8 | 100.0 |
| | Total | 5928 | 100.0 | 100.0 | |

Reasons for drinking: To get through the day

| | | Frequency | Percent | Valid Percent | Cumulative Percent |
|-------|-----------|-----------|---------|---------------|--------------------|
| Valid | No answer | 104 | 1.8 | 1.8 | 1.8 |
| | Yes | 215 | 3.6 | 3.6 | 5.4 |
| | No | 5574 | 94.0 | 94.0 | 99.4 |
| | Unsure | 35 | .6 | .6 | 100.0 |
| | Total | 5928 | 100.0 | 100.0 | |

Reasons for drinking: To cope with anxiety about social situations

| | | Frequency | Percent | Valid Percent | Cumulative Percent |
|-------|-----------|-----------|---------|---------------|--------------------|
| Valid | No answer | 101 | 1.7 | 1.7 | 1.7 |
| | Yes | 724 | 12.2 | 12.2 | 13.9 |
| | No | 5047 | 85.1 | 85.1 | 99.1 |
| | Unsure | 56 | .9 | .9 | 100.0 |
| | Total | 5928 | 100.0 | 100.0 | |

Reasons for drinking: To increase the effects of other drug(s)

| | | Frequency | Percent | Valid Percent | Cumulative Percent |
|-------|-----------|-----------|---------|---------------|--------------------|
| Valid | No answer | 114 | 1.9 | 1.9 | 1.9 |
| | Yes | 199 | 3.4 | 3.4 | 5.3 |
| | No | 5592 | 94.3 | 94.3 | 99.6 |
| | Unsure | 23 | .4 | .4 | 100.0 |
| | Total | 5928 | 100.0 | 100.0 | |

Reasons for drinking: To decrease the effects of other drug(s)

| | | Frequency | Percent | Valid Percent | Cumulative Percent |
|-------|-----------|-----------|---------|---------------|--------------------|
| Valid | No answer | 103 | 1.7 | 1.7 | 1.7 |
| | Yes | 83 | 1.4 | 1.4 | 3.1 |
| | No | 5714 | 96.4 | 96.4 | 99.5 |
| | Unsure | 28 | .5 | .5 | 100.0 |
| | Total | 5928 | 100.0 | 100.0 | |

Reasons for drinking: To get to sleep

| | | Frequency | Percent | Valid Percent | Cumulative Percent |
|-------|-----------|-----------|---------|---------------|--------------------|
| Valid | No answer | 117 | 2.0 | 2.0 | 2.0 |
| | Yes | 528 | 8.9 | 8.9 | 10.9 |
| | No | 5243 | 88.4 | 88.4 | 99.3 |
| | Unsure | 40 | .7 | .7 | 100.0 |
| | Total | 5928 | 100.0 | 100.0 | |

Reasons for drinking: Because it tastes good

| | | Frequency | Percent | Valid Percent | Cumulative Percent |
|-------|-----------|-----------|---------|---------------|--------------------|
| Valid | No answer | 112 | 1.9 | 1.9 | 1.9 |
| | Yes | 2802 | 47.3 | 47.3 | 49.2 |
| | No | 2929 | 49.4 | 49.4 | 98.6 |
| | Unsure | 85 | 1.4 | 1.4 | 100.0 |
| | Total | 5928 | 100.0 | 100.0 | |

Reasons for drinking: To get away from my problems

| | | Frequency | Percent | Valid Percent | Cumulative Percent |
|-------|-----------|-----------|---------|---------------|--------------------|
| Valid | No answer | 133 | 2.2 | 2.2 | 2.2 |
| | Yes | 715 | 12.1 | 12.1 | 14.3 |
| | No | 5005 | 84.4 | 84.4 | 98.7 |
| | Unsure | 75 | 1.3 | 1.3 | 100.0 |
| | Total | 5928 | 100.0 | 100.0 | |

Usual type of alcohol

| | | Frequency | Percent | Valid Percent | Cumulative Percent |
|-------|-------------------------|-----------|---------|---------------|--------------------|
| Valid | No answer | 201 | 3.4 | 3.4 | 3.4 |
| | I did not drink alcohol | 1626 | 27.4 | 27.4 | 30.8 |
| | Beer | 1439 | 24.3 | 24.3 | 55.1 |
| | Malt beverages | 296 | 5.0 | 5.0 | 60.1 |
| | Wine coolers | 95 | 1.6 | 1.6 | 61.7 |
| | Wine | 529 | 8.9 | 8.9 | 70.6 |
| | Liquor | 1667 | 28.1 | 28.1 | 98.7 |
| | Some other type | 75 | 1.3 | 1.3 | 100.0 |
| | Total | 5928 | 100.0 | 100.0 | |

Frequency of binge drinking during the last two weeks

| | | Frequency | Percent | Valid Percent | Cumulative Percent |
|-------|-----------|-----------|---------|---------------|--------------------|
| Valid | No answer | 12 | .2 | .2 | .2 |
| | 0 | 3737 | 63.0 | 63.0 | 63.2 |
| | 1 | 731 | 12.3 | 12.3 | 75.6 |
| | 2 | 523 | 8.8 | 8.8 | 84.4 |
| | 3 | 291 | 4.9 | 4.9 | 89.3 |
| | 4 | 253 | 4.3 | 4.3 | 93.6 |
| | 5 | 144 | 2.4 | 2.4 | 96.0 |
| | 6 | 73 | 1.2 | 1.2 | 97.2 |
| | 7 | 27 | .5 | .5 | 97.7 |
| | 8 | 28 | .5 | .5 | 98.2 |
| | 9 | 15 | .3 | .3 | 98.4 |
| | 10 | 39 | .7 | .7 | 99.1 |
| | 11 | 2 | .0 | .0 | 99.1 |
| | 12 | 8 | .1 | .1 | 99.2 |
| | 13 | 1 | .0 | .0 | 99.3 |
| | 14 | 3 | .1 | .1 | 99.3 |
| | 15 | 9 | .2 | .2 | 99.5 |
| | 16 | 2 | .0 | .0 | 99.5 |
| | 17 | 2 | .0 | .0 | 99.5 |
| | 19 | 1 | .0 | .0 | 99.5 |
| | 20 | 7 | .1 | .1 | 99.7 |
| | 23 | 1 | .0 | .0 | 99.7 |
| | 24 | 1 | .0 | .0 | 99.7 |
| | 25 | 3 | .1 | .1 | 99.7 |
| | 30 | 2 | .0 | .0 | 99.8 |
| | 34 | 1 | .0 | .0 | 99.8 |
| | 40 | 1 | .0 | .0 | 99.8 |
| | 50 | 4 | .1 | .1 | 99.9 |
| | 51 | 1 | .0 | .0 | 99.9 |

Frequency of binge drinking during the last two weeks

| | Frequency | Percent | Valid Percent | Cumulative Percent |
|-------|-----------|---------|---------------|--------------------|
| Valid | 52 | 1 | .0 | 99.9 |
| | 70 | 1 | .0 | 99.9 |
| | 99 | 4 | .1 | 100.0 |
| Total | 5928 | 100.0 | 100.0 | |

Perceived number of alcoholic drinks consumed by the typical student at the last party

| | Frequency | Percent | Valid Percent | Cumulative Percent |
|-------|-----------|---------|---------------|--------------------|
| Valid | No answer | 12 | .2 | .2 |
| | 0 | 545 | 9.2 | 9.4 |
| | 1 | 103 | 1.7 | 11.1 |
| | 2 | 361 | 6.1 | 17.2 |
| | 3 | 755 | 12.7 | 30.0 |
| | 4 | 751 | 12.7 | 42.6 |
| | 5 | 1247 | 21.0 | 63.7 |
| | 6 | 666 | 11.2 | 74.9 |
| | 7 | 360 | 6.1 | 81.0 |
| | 8 | 336 | 5.7 | 86.6 |
| | 9 | 83 | 1.4 | 88.0 |
| | 10 | 382 | 6.4 | 94.5 |
| | 11 | 11 | .2 | 94.7 |
| | 12 | 75 | 1.3 | 95.9 |
| | 13 | 8 | .1 | 96.1 |
| | 14 | 8 | .1 | 96.2 |
| | 15 | 70 | 1.2 | 97.4 |
| | 16 | 4 | .1 | 97.5 |
| | 17 | 1 | .0 | 97.5 |
| | 18 | 5 | .1 | 97.6 |
| | 20 | 40 | .7 | 98.2 |

**Perceived number of alcoholic drinks consumed by the typical student
at the last party**

| | Frequency | Percent | Valid Percent | Cumulative Percent |
|--------------|-------------|--------------|---------------|-----------------------|
| Valid 21 | 1 | .0 | .0 | 98.2 |
| 22 | 2 | .0 | .0 | 98.3 |
| 23 | 1 | .0 | .0 | 98.3 |
| 24 | 1 | .0 | .0 | 98.3 |
| 25 | 14 | .2 | .2 | 98.5 |
| 27 | 3 | .1 | .1 | 98.6 |
| 28 | 1 | .0 | .0 | 98.6 |
| 30 | 7 | .1 | .1 | 98.7 |
| 32 | 1 | .0 | .0 | 98.8 |
| 33 | 1 | .0 | .0 | 98.8 |
| 35 | 1 | .0 | .0 | 98.8 |
| 36 | 1 | .0 | .0 | 98.8 |
| 40 | 9 | .2 | .2 | 99.0 |
| 44 | 1 | .0 | .0 | 99.0 |
| 45 | 4 | .1 | .1 | 99.0 |
| 48 | 2 | .0 | .0 | 99.1 |
| 49 | 2 | .0 | .0 | 99.1 |
| 50 | 18 | .3 | .3 | 99.4 |
| 55 | 1 | .0 | .0 | 99.4 |
| 60 | 3 | .1 | .1 | 99.5 |
| 70 | 3 | .1 | .1 | 99.5 |
| 75 | 6 | .1 | .1 | 99.6 |
| 79 | 2 | .0 | .0 | 99.7 |
| 85 | 2 | .0 | .0 | 99.7 |
| 88 | 3 | .1 | .1 | 99.7 |
| 89 | 2 | .0 | .0 | 99.8 |
| 90 | 1 | .0 | .0 | 99.8 |
| 98 | 1 | .0 | .0 | 99.8 |
| 99 | 11 | .2 | .2 | 100.0 |
| Total | 5928 | 100.0 | 100.0 | |

Gambling: Played cards at home

| | | Frequency | Percent | Valid Percent | Cumulative Percent |
|---------|--------------------|-----------|---------|---------------|--------------------|
| Valid | No answer | 22 | .4 | .4 | .4 |
| | Never | 4598 | 77.6 | 82.0 | 82.4 |
| | 1-2 times per year | 532 | 9.0 | 9.5 | 91.9 |
| | 3-6 times per year | 283 | 4.8 | 5.0 | 96.9 |
| | Monthly | 118 | 2.0 | 2.1 | 99.1 |
| | Weekly | 45 | .8 | .8 | 99.9 |
| | 3+ times per week | 8 | .1 | .1 | 100.0 |
| | Total | 5606 | 94.6 | 100.0 | |
| Missing | System | 322 | 5.4 | | |
| Total | | 5928 | 100.0 | | |

Gambling: Gambled at a casino

| | | Frequency | Percent | Valid Percent | Cumulative Percent |
|---------|--------------------|-----------|---------|---------------|--------------------|
| Valid | No answer | 34 | .6 | .6 | .6 |
| | Never | 4760 | 80.3 | 84.9 | 85.5 |
| | 1-2 times per year | 642 | 10.8 | 11.5 | 97.0 |
| | 3-6 times per year | 130 | 2.2 | 2.3 | 99.3 |
| | Monthly | 33 | .6 | .6 | 99.9 |
| | Weekly | 5 | .1 | .1 | 100.0 |
| | 3+ times per week | 2 | .0 | .0 | 100.0 |
| | Total | 5606 | 94.6 | 100.0 | |
| Missing | System | 322 | 5.4 | | |
| Total | | 5928 | 100.0 | | |

Gambling: Gambled on-line

| | | Frequency | Percent | Valid Percent | Cumulative Percent |
|---------|--------------------|-----------|---------|---------------|--------------------|
| Valid | No answer | 48 | .8 | .9 | .9 |
| | Never | 5375 | 90.7 | 95.9 | 96.7 |
| | 1-2 times per year | 68 | 1.1 | 1.2 | 97.9 |
| | 3-6 times per year | 54 | .9 | 1.0 | 98.9 |
| | Monthly | 37 | .6 | .7 | 99.6 |
| | Weekly | 14 | .2 | .2 | 99.8 |
| | 3+ times per week | 10 | .2 | .2 | 100.0 |
| | Total | 5606 | 94.6 | 100.0 | |
| Missing | System | 322 | 5.4 | | |
| Total | | 5928 | 100.0 | | |

Gambling: Bet on fantasy football/basketball

| | | Frequency | Percent | Valid Percent | Cumulative Percent |
|---------|--------------------|-----------|---------|---------------|--------------------|
| Valid | No answer | 41 | .7 | .7 | .7 |
| | Never | 5253 | 88.6 | 93.7 | 94.4 |
| | 1-2 times per year | 224 | 3.8 | 4.0 | 98.4 |
| | 3-6 times per year | 47 | .8 | .8 | 99.3 |
| | Monthly | 24 | .4 | .4 | 99.7 |
| | Weekly | 11 | .2 | .2 | 99.9 |
| | 3+ times per week | 6 | .1 | .1 | 100.0 |
| | Total | 5606 | 94.6 | 100.0 | |
| Missing | System | 322 | 5.4 | | |
| Total | | 5928 | 100.0 | | |

Gambling: Betting pools

| | | Frequency | Percent | Valid Percent | Cumulative Percent |
|---------|--------------------|-----------|---------|---------------|--------------------|
| Valid | No answer | 40 | .7 | .7 | .7 |
| | Never | 4911 | 82.8 | 87.6 | 88.3 |
| | 1-2 times per year | 572 | 9.6 | 10.2 | 98.5 |
| | 3-6 times per year | 48 | .8 | .9 | 99.4 |
| | Monthly | 17 | .3 | .3 | 99.7 |
| | Weekly | 14 | .2 | .2 | 99.9 |
| | 3+ times per week | 4 | .1 | .1 | 100.0 |
| | Total | 5606 | 94.6 | 100.0 | |
| Missing | System | 322 | 5.4 | | |
| Total | | 5928 | 100.0 | | |

Gambling: Lottery

| | | Frequency | Percent | Valid Percent | Cumulative Percent |
|---------|--------------------|-----------|---------|---------------|--------------------|
| Valid | No answer | 38 | .6 | .7 | .7 |
| | Never | 3847 | 64.9 | 68.6 | 69.3 |
| | 1-2 times per year | 845 | 14.3 | 15.1 | 84.4 |
| | 3-6 times per year | 546 | 9.2 | 9.7 | 94.1 |
| | Monthly | 207 | 3.5 | 3.7 | 97.8 |
| | Weekly | 112 | 1.9 | 2.0 | 99.8 |
| | 3+ times per week | 11 | .2 | .2 | 100.0 |
| | Total | 5606 | 94.6 | 100.0 | |
| Missing | System | 322 | 5.4 | | |
| Total | | 5928 | 100.0 | | |

Gambling: Placed bet with bookie

| | | Frequency | Percent | Valid Percent | Cumulative Percent |
|---------|--------------------|-----------|---------|---------------|--------------------|
| Valid | No answer | 46 | .8 | .8 | .8 |
| | Never | 5506 | 92.9 | 98.2 | 99.0 |
| | 1-2 times per year | 32 | .5 | .6 | 99.6 |
| | 3-6 times per year | 11 | .2 | .2 | 99.8 |
| | Monthly | 5 | .1 | .1 | 99.9 |
| | Weekly | 3 | .1 | .1 | 99.9 |
| | 3+ times per week | 3 | .1 | .1 | 100.0 |
| | Total | 5606 | 94.6 | 100.0 | |
| Missing | System | 322 | 5.4 | | |
| Total | | 5928 | 100.0 | | |

Consequences of gambling: Academic problems

| | | Frequency | Percent | Valid Percent | Cumulative Percent |
|---------|-----------------|-----------|---------|---------------|--------------------|
| Valid | No answer | 38 | .6 | .7 | .7 |
| | I do not gamble | 4077 | 68.8 | 72.7 | 73.4 |
| | None | 1484 | 25.0 | 26.5 | 99.9 |
| | Occasionally | 6 | .1 | .1 | 100.0 |
| | Frequently | 1 | .0 | .0 | 100.0 |
| | Total | 5606 | 94.6 | 100.0 | |
| Missing | System | 322 | 5.4 | | |
| Total | | 5928 | 100.0 | | |

Consequences of gambling: Issues with legal system

| | | Frequency | Percent | Valid Percent | Cumulative Percent |
|---------|-----------------|-----------|---------|---------------|--------------------|
| Valid | No answer | 42 | .7 | .7 | .7 |
| | I do not gamble | 4069 | 68.6 | 72.6 | 73.3 |
| | None | 1491 | 25.2 | 26.6 | 99.9 |
| | Occasionally | 3 | .1 | .1 | 100.0 |
| | Frequently | 1 | .0 | .0 | 100.0 |
| | Total | 5606 | 94.6 | 100.0 | |
| Missing | System | 322 | 5.4 | | |
| Total | | 5928 | 100.0 | | |

Consequences of gambling: Financial issues

| | | Frequency | Percent | Valid Percent | Cumulative Percent |
|---------|-----------------|-----------|---------|---------------|--------------------|
| Valid | No answer | 61 | 1.0 | 1.1 | 1.1 |
| | I do not gamble | 4045 | 68.2 | 72.2 | 73.2 |
| | None | 1437 | 24.2 | 25.6 | 98.9 |
| | Occasionally | 56 | .9 | 1.0 | 99.9 |
| | Frequently | 7 | .1 | .1 | 100.0 |
| | Total | 5606 | 94.6 | 100.0 | |
| Missing | System | 322 | 5.4 | | |
| Total | | 5928 | 100.0 | | |

Consequences of gambling: Felt bad about gambling

| | | Frequency | Percent | Valid Percent | Cumulative Percent |
|---------|-----------------|-----------|---------|---------------|--------------------|
| Valid | No answer | 64 | 1.1 | 1.1 | 1.1 |
| | I do not gamble | 4045 | 68.2 | 72.2 | 73.3 |
| | None | 1378 | 23.2 | 24.6 | 97.9 |
| | Occasionally | 111 | 1.9 | 2.0 | 99.9 |
| | Frequently | 8 | .1 | .1 | 100.0 |
| | Total | 5606 | 94.6 | 100.0 | |
| Missing | System | 322 | 5.4 | | |
| Total | | 5928 | 100.0 | | |

Consequences of gambling: Poor physical health

| | | Frequency | Percent | Valid Percent | Cumulative Percent |
|---------|-----------------|-----------|---------|---------------|--------------------|
| Valid | No answer | 64 | 1.1 | 1.1 | 1.1 |
| | I do not gamble | 4048 | 68.3 | 72.2 | 73.3 |
| | None | 1481 | 25.0 | 26.4 | 99.8 |
| | Occasionally | 9 | .2 | .2 | 99.9 |
| | Frequently | 4 | .1 | .1 | 100.0 |
| | Total | 5606 | 94.6 | 100.0 | |
| Missing | System | 322 | 5.4 | | |
| Total | | 5928 | 100.0 | | |

Consequences of gambling: Issues with friends and family

| | | Frequency | Percent | Valid Percent | Cumulative Percent |
|---------|-----------------|-----------|---------|---------------|--------------------|
| Valid | No answer | 69 | 1.2 | 1.2 | 1.2 |
| | I do not gamble | 4049 | 68.3 | 72.2 | 73.5 |
| | None | 1461 | 24.6 | 26.1 | 99.5 |
| | Occasionally | 24 | .4 | .4 | 99.9 |
| | Frequently | 3 | .1 | .1 | 100.0 |
| | Total | 5606 | 94.6 | 100.0 | |
| Missing | System | 322 | 5.4 | | |
| Total | | 5928 | 100.0 | | |

Gender

| | | Frequency | Percent | Valid Percent | Cumulative Percent |
|-------|--------|-----------|---------|---------------|--------------------|
| Valid | Male | 2180 | 36.8 | 36.8 | 36.8 |
| | Female | 3748 | 63.2 | 63.2 | 100.0 |
| | Total | 5928 | 100.0 | 100.0 | |

Ethnicity

| | | Frequency | Percent | Valid Percent | Cumulative Percent |
|-------|--------------|-----------|---------|---------------|--------------------|
| Valid | No answer | 52 | .9 | .9 | .9 |
| | Hispanic | 188 | 3.2 | 3.2 | 4.0 |
| | Non-Hispanic | 5688 | 96.0 | 96.0 | 100.0 |
| | Total | 5928 | 100.0 | 100.0 | |

Race

| | | Frequency | Percent | Valid Percent | Cumulative Percent |
|-------|-----------------------------------|-----------|---------|---------------|--------------------|
| Valid | No answer | 37 | .6 | .6 | .6 |
| | White | 5211 | 87.9 | 87.9 | 88.5 |
| | Black | 218 | 3.7 | 3.7 | 92.2 |
| | Asian | 154 | 2.6 | 2.6 | 94.8 |
| | Native American or Alaskan Native | 19 | .3 | .3 | 95.1 |
| | Hawaiian or Pacific Islander | 7 | .1 | .1 | 95.2 |
| | More than one race | 152 | 2.6 | 2.6 | 97.8 |
| | Other | 130 | 2.2 | 2.2 | 100.0 |
| | Total | 5928 | 100.0 | 100.0 | |

Ethnic identity: Spent time trying to find more information

| | | Frequency | Percent | Valid Percent | Cumulative Percent |
|-------|---------------------------|-----------|---------|---------------|--------------------|
| Valid | No answer | 46 | .8 | .8 | .8 |
| | Strongly agree | 597 | 10.1 | 10.1 | 10.8 |
| | Agree | 1244 | 21.0 | 21.0 | 31.8 |
| | Neither agree or disagree | 2161 | 36.5 | 36.5 | 68.3 |
| | Disagree | 1111 | 18.7 | 18.7 | 87.0 |
| | Strongly disagree | 769 | 13.0 | 13.0 | 100.0 |
| | Total | 5928 | 100.0 | 100.0 | |

Ethnic identity: Strong sense of belonging

| | | Frequency | Percent | Valid Percent | Cumulative Percent |
|-------|---------------------------|-----------|---------|---------------|--------------------|
| Valid | No answer | 54 | .9 | .9 | .9 |
| | Strongly agree | 732 | 12.3 | 12.3 | 13.3 |
| | Agree | 1531 | 25.8 | 25.8 | 39.1 |
| | Neither agree or disagree | 2565 | 43.3 | 43.3 | 82.4 |
| | Dsagree | 638 | 10.8 | 10.8 | 93.1 |
| | Strongly disagree | 408 | 6.9 | 6.9 | 100.0 |
| | Total | 5928 | 100.0 | 100.0 | |

Ethnic identity: Understand ethnic group membership

| | | Frequency | Percent | Valid Percent | Cumulative Percent |
|-------|---------------------------|-----------|---------|---------------|--------------------|
| Valid | No answer | 65 | 1.1 | 1.1 | 1.1 |
| | Strongly agree | 758 | 12.8 | 12.8 | 13.9 |
| | Agree | 1829 | 30.9 | 30.9 | 44.7 |
| | Neither agree or disagree | 2418 | 40.8 | 40.8 | 85.5 |
| | Dsagree | 533 | 9.0 | 9.0 | 94.5 |
| | Strongly disagree | 325 | 5.5 | 5.5 | 100.0 |
| | Total | 5928 | 100.0 | 100.0 | |

Ethnic identity: Often done things to understand

| | | Frequency | Percent | Valid Percent | Cumulative Percent |
|-------|---------------------------|-----------|---------|---------------|--------------------|
| Valid | No answer | 79 | 1.3 | 1.3 | 1.3 |
| | Strongly agree | 475 | 8.0 | 8.0 | 9.3 |
| | Agree | 1143 | 19.3 | 19.3 | 28.6 |
| | Neither agree or disagree | 2752 | 46.4 | 46.4 | 75.1 |
| | Dsagree | 970 | 16.4 | 16.4 | 91.4 |
| | Strongly disagree | 509 | 8.6 | 8.6 | 100.0 |
| | Total | 5928 | 100.0 | 100.0 | |

Ethnic identity: Talked to other people to learn more

| | | Frequency | Percent | Valid Percent | Cumulative Percent |
|-------|---------------------------|-----------|---------|---------------|--------------------|
| Valid | No answer | 78 | 1.3 | 1.3 | 1.3 |
| | Strongly agree | 467 | 7.9 | 7.9 | 9.2 |
| | Agree | 1127 | 19.0 | 19.0 | 28.2 |
| | Neither agree or disagree | 2558 | 43.2 | 43.2 | 71.4 |
| | Dsagree | 1070 | 18.0 | 18.0 | 89.4 |
| | Strongly disagree | 628 | 10.6 | 10.6 | 100.0 |
| | Total | 5928 | 100.0 | 100.0 | |

Ethnic identity: Strong attachment to my group

| | | Frequency | Percent | Valid Percent | Cumulative Percent |
|-------|---------------------------|-----------|---------|---------------|--------------------|
| Valid | No answer | 77 | 1.3 | 1.3 | 1.3 |
| | Strongly agree | 685 | 11.6 | 11.6 | 12.9 |
| | Agree | 1275 | 21.5 | 21.5 | 34.4 |
| | Neither agree or disagree | 2715 | 45.8 | 45.8 | 80.2 |
| | Dsagree | 693 | 11.7 | 11.7 | 91.9 |
| | Strongly disagree | 483 | 8.1 | 8.1 | 100.0 |
| | Total | 5928 | 100.0 | 100.0 | |

Marital status

| | | Frequency | Percent | Valid Percent | Cumulative Percent |
|-------|-----------------------------|-----------|---------|---------------|--------------------|
| Valid | No answer | 20 | .3 | .3 | .3 |
| | Single, never married | 4604 | 77.7 | 77.7 | 78.0 |
| | Single, living with partner | 365 | 6.2 | 6.2 | 84.2 |
| | Married | 719 | 12.1 | 12.1 | 96.3 |
| | Separated | 29 | .5 | .5 | 96.8 |
| | Divorced | 172 | 2.9 | 2.9 | 99.7 |
| | Widowed | 19 | .3 | .3 | 100.0 |
| | Total | 5928 | 100.0 | 100.0 | |

Employment status

| | | Frequency | Percent | Valid Percent | Cumulative Percent |
|-------|-----------|-----------|---------|---------------|--------------------|
| Valid | No answer | 18 | .3 | .3 | .3 |
| | Full-time | 707 | 11.9 | 11.9 | 12.2 |
| | Part-time | 2623 | 44.2 | 44.2 | 56.5 |
| | No | 2580 | 43.5 | 43.5 | 100.0 |
| | Total | 5928 | 100.0 | 100.0 | |

Approximate GPA

| | | Frequency | Percent | Valid Percent | Cumulative Percent |
|-------|-----------|-----------|---------|---------------|--------------------|
| Valid | No answer | 22 | .4 | .4 | .4 |
| | A | 2492 | 42.0 | 42.0 | 42.4 |
| | B | 2767 | 46.7 | 46.7 | 89.1 |
| | C | 615 | 10.4 | 10.4 | 99.5 |
| | D | 28 | .5 | .5 | 99.9 |
| | F | 4 | .1 | .1 | 100.0 |
| | Total | 5928 | 100.0 | 100.0 | |

Student status

| | | Frequency | Percent | Valid Percent | Cumulative Percent |
|-------|-----------|-----------|---------|---------------|--------------------|
| Valid | No answer | 50 | .8 | .8 | .8 |
| | Full-time | 5304 | 89.5 | 89.5 | 90.3 |
| | Part-time | 574 | 9.7 | 9.7 | 100.0 |
| | Total | 5928 | 100.0 | 100.0 | |

Classification

| | | Frequency | Percent | Valid Percent | Cumulative Percent |
|-------|--------------------------|-----------|---------|---------------|--------------------|
| Valid | No answer | 23 | .4 | .4 | .4 |
| | Freshman or first year | 1729 | 29.2 | 29.2 | 29.6 |
| | Sophomore or second year | 1506 | 25.4 | 25.4 | 55.0 |
| | Junior | 1195 | 20.2 | 20.2 | 75.1 |
| | Senior | 1139 | 19.2 | 19.2 | 94.3 |
| | Grad or professional | 257 | 4.3 | 4.3 | 98.7 |
| | Not seeking a degree | 32 | .5 | .5 | 99.2 |
| | Other | 47 | .8 | .8 | 100.0 |
| | Total | 5928 | 100.0 | 100.0 | |

Location of current residence

| | | Frequency | Percent | Valid Percent | Cumulative Percent |
|-------|------------|-----------|---------|---------------|--------------------|
| Valid | No answer | 44 | .7 | .7 | .7 |
| | On-campus | 2978 | 50.2 | 50.2 | 51.0 |
| | Off-campus | 2906 | 49.0 | 49.0 | 100.0 |
| | Total | 5928 | 100.0 | 100.0 | |

Housing type

| | | Frequency | Percent | Valid Percent | Cumulative Percent |
|-------|------------------------|-----------|---------|---------------|--------------------|
| Valid | No answer | 36 | .6 | .6 | .6 |
| | House or apartment | 3145 | 53.1 | 53.1 | 53.7 |
| | Residence hall | 2184 | 36.8 | 36.8 | 90.5 |
| | Fraternity or sorority | 334 | 5.6 | 5.6 | 96.1 |
| | Other campus housing | 138 | 2.3 | 2.3 | 98.5 |
| | Other | 91 | 1.5 | 1.5 | 100.0 |
| | Total | 5928 | 100.0 | 100.0 | |

Alone

| | | Frequency | Percent | Valid Percent | Cumulative Percent |
|-------|-----------|-----------|---------|---------------|--------------------|
| Valid | No answer | 5113 | 86.3 | 86.3 | 86.3 |
| | Yes | 815 | 13.7 | 13.7 | 100.0 |
| | Total | 5928 | 100.0 | 100.0 | |

With roomates

| | | Frequency | Percent | Valid Percent | Cumulative Percent |
|-------|-----------|-----------|---------|---------------|--------------------|
| Valid | No answer | 2504 | 42.2 | 42.2 | 42.2 |
| | Yes | 3424 | 57.8 | 57.8 | 100.0 |
| | Total | 5928 | 100.0 | 100.0 | |

With parents

| | | Frequency | Percent | Valid Percent | Cumulative Percent |
|-------|-----------|-----------|---------|---------------|--------------------|
| Valid | No answer | 5251 | 88.6 | 88.6 | 88.6 |
| | Yes | 677 | 11.4 | 11.4 | 100.0 |
| | Total | 5928 | 100.0 | 100.0 | |

With spouse

| | | Frequency | Percent | Valid Percent | Cumulative Percent |
|-------|-----------|-----------|---------|---------------|--------------------|
| Valid | No answer | 5091 | 85.9 | 85.9 | 85.9 |
| | Yes | 837 | 14.1 | 14.1 | 100.0 |
| | Total | 5928 | 100.0 | 100.0 | |

With children

| | | Frequency | Percent | Valid Percent | Cumulative Percent |
|-------|-----------|-----------|---------|---------------|--------------------|
| Valid | No answer | 5254 | 88.6 | 88.6 | 88.6 |
| | Yes | 674 | 11.4 | 11.4 | 100.0 |
| | Total | 5928 | 100.0 | 100.0 | |

Other

| | | Frequency | Percent | Valid Percent | Cumulative Percent |
|-------|-----------|-----------|---------|---------------|--------------------|
| Valid | No answer | 5700 | 96.2 | 96.2 | 96.2 |
| | Yes | 228 | 3.8 | 3.8 | 100.0 |
| | Total | 5928 | 100.0 | 100.0 | |