

Indiana Collegiate Action Network

Results of the
**Indiana College
Substance Use Survey**
2011



Results of the Indiana College Substance Use Survey 2011

by

Rosemary King, M.P.H.
Mi Kyung Jun, Ph.D.

Indiana Prevention Resource Center
501 N. Morton St., Suite 110
Bloomington, Indiana 47404
www.drugs.indiana.edu

Online survey and report cover designed by Junghun Lee, M.S.

Funded by the Indiana Family and Social Services Administration,
Division of Mental Health and Addiction
through a contract with the Indiana Collegiate Action Network

TABLE OF CONTENTS

List of Tables	ii
List of Figures	iii
Introduction	1
Methodology	3
Key Findings	5
Prevalence and Frequency of Substance Use	5
Consequences of Substance Use	17
Risk Factors	20
Gambling Behaviors	27
Characteristics of Survey Participants	31
References	33
Frequency Tables	35

LIST OF TABLES

Table 1. Select Demographic Characteristics of 2009, 2010, and 2011 Survey Respondents	2
Table 2. Response Rate, 2011.....	4
Table 3. Number of Usable Questionnaires, 2011.....	4
Table 4. Percentage of Students Reporting Use of Select Substances in the Past Year, by Select Demographic Characteristics, 2011.....	7
Table 5. Percentage of Students Reporting Use of Select Substances in the Past Month, by Select Demographic Characteristics, 2011.....	8
Table 6. Percentage of Students Reporting Binge Drinking in the Past Month, by Select Demographic Characteristics, 2011	10
Table 7. Percentage of Students Reporting Binge Drinking in the Past Two Weeks, by Select Demographic Characteristics, 2011	10
Table 8. Percentage of Students Reporting Prescription Drug Misuse in the Past Six Months, by Select Demographic Characteristics, 2011.....	12
Table 9. Percentage of Students Who Drank Alcohol in Past Six Months, Who Indicated Select Reasons for Drinking Alcohol, 2011 (n = 4,239)	16
Table 10. Percentage of Students Who Drank Alcohol in the Past Six Months, Who Reported Select Consequences as a Result of Their Drinking, 2011 (n = 4,239).....	18
Table 11. Percentage of Students Who Used Drugs in the Past Six Months, Who Reported Select Consequences as a Result of Their Drug Use, 2011 (n = 1,753)	19
Table 12. Average Age of First Time Use of Select Substances, 2011.....	21
Table 13. Three Easiest Ways of Getting Alcohol as Reported by Students Who Are Under 21 and Who Drink Alcohol, 2011 (n = 1,771).....	23
Table 14. Mean Number of Drinks Respondents Thought the Typical Student Consumed the Last Time He/She “Partied/Socialized”, 2011 (range = 0 – 99).....	26
Table 15. Percentage of Students Who Thought Other Students on Campus Would Approve or Disapprove of Select Behaviors, 2011	26
Table 16. Percentage of Students Reporting Gambling Behaviors in the Past Year, 2011	28
Table 17. Percentage of Students Who Gambled in the Past Year, Who Reported Select Consequences as a Result of Their Gambling, 2011 (n = 2,475)	30
Table 18. Demographic Characteristics of Survey Participants, 2011	31

LIST OF FIGURES

Figure 1. Frequency of Binge Drinking in the Past Two Weeks, 2011.....	10
Figure 2. Percentage of Students Who Drank Alcohol in Past Six Months, Who Combined Alcohol with Energy Drinks or Other Stimulants, 2011 (n = 4,239)	13
Figure 3. Percentage of Students Who Drank Alcohol in Past Six Months, Who Reported Select Categories as the Usual Type of Alcohol They Drank in the Past Month, 2011 (n = 4,239).....	14
Figure 4. Percentage of Students Under 21 Who Reported Purchasing Alcohol from a Retailer in the Past Six Months, 2011 (n = 2,462).....	23
Figure 5. Percentage of Students Under 21 Who Have Purchased Alcohol from a Retailer, Who Reported Select Methods as the Most Common for Purchasing Alcohol, 2011 (n = 164).....	24
Figure 6. Percentage of Students Under 21 Who Reported Purchasing Alcohol by Select Locations as the Easiest Place to Purchase Alcohol, 2011 (n = 164).....	24
Figure 7. Percentage of Students Who Reported Weekly or More Frequent Gambling in the Past Year, by Gambling Category, 2011.....	29
Figure 8. Most Frequent Location (Other Than Online or Lottery) in Past Year, 2011	29

INTRODUCTION

Substance use by college students has long been recognized as a serious problem on our nation's campuses, with alcohol being the most widely used substance. In 1998, the National Institute on Alcohol Abuse and Alcoholism undertook a comprehensive assessment of drinking on college campuses, concluding that social and environmental influences present on most campuses have created a culture of drinking, where alcohol consumption has become a rite of passage. Drinking to excess (binge drinking) is widespread among college students, and has serious consequences (NIAAA, 2002). The rates of alcohol and drug use have remained relatively steady over the past decade, with approximately 80% of college students nationwide using alcohol in the past year and approximately one-third using illicit drugs (Johnston et al., 2011).

In 2006, the Indiana Collegiate Action Network (ICAN) provided funding for the first uniform assessment of substance use across institutions of higher education in Indiana, utilizing the Core Alcohol and Drug Survey. Beginning in 2008, the Indiana Division of Mental Health and Addiction (DMHA) has awarded funding to ICAN to continue the statewide collection and analysis of data on the prevalence of substance use by Indiana college students. ICAN, in conjunction with the Indiana Prevention Resource Center (IPRC) developed a new survey instrument in 2009, called the Indiana College Substance Use Survey, to collect information on items of interest to Indiana colleges.

This report summarizes the findings of the third annual Indiana College Substance Use Survey that was conducted by the Indiana Prevention Resource Center in the spring of 2011. Findings on the prevalence of alcohol, tobacco and other drug use, consequences of use, alcohol availability, and student perceptions of peer behaviors are presented. The findings have been analyzed across gender and age variables. National prevalence data from the Monitoring the Future Study have been included to facilitate comparison between the participating Indiana college students and the national rates, where available. The Monitoring the Future data are the most recent national data (2010) on college students' prevalence rates of substance use available at the time of this report.

Results from the 2009 and 2010 Indiana College Substance Use Survey are not presented in this report because the participating schools were largely different between the three years. The small number of schools participating in the survey and the absence of a random sampling technique make it unsuitable to generalize the findings to Indiana college students overall. Therefore, the data should not be compared to identify any trends in behaviors over time. The following table compares some of the demographic characteristics of the survey participants in 2009, 2010, and 2011. The previous years' reports can be found at www.drugs.indiana.edu/data-survey_icsus.html.

Table 1. Select Demographic Characteristics of 2009, 2010, and 2011 Survey Respondents

	2009	2010	2011
	%	%	%
Gender			
Male	42.9	36.8	36.2
Female	57.1	63.2	63.8
Age			
Under 21	53.4	46.1	46.4
21 or older	46.6	53.8	53.6
Race			
White	86.9	87.9	86.4
Black/African American	2.3	3.7	3.9
Asian	3.7	2.6	4.3
Other	6.4	5.2	4.8
Ethnicity			
Hispanic	5.5	3.2	3.1
Student status			
Full-time	95.6	89.5	92.0
Location of residence			
On-campus	61.9	50.3	45.1
# of usable surveys	4,885	5,928	5,304

METHODOLOGY

The Indiana College Substance Use Survey was developed in 2009 by the Indiana Collegiate Action Network (ICAN) and the Indiana Prevention Resource Center (IPRC), with input from Indiana institutions of higher education and the Indiana State Epidemiology and Outcomes Workgroup. The survey was developed to assess substance use and consequences, as well as variables identified in the research literature that are associated with use (availability, peer attitudes and norms, and age of first use). Survey items were adapted from several sources, including the Core Alcohol and Drug Survey (Core Institute, Southern Illinois University - Carbondale), the National College Health Assessment II (American College Health Association), and the Monitoring the Future Survey (Institute for Social Research, University of Michigan). The survey includes three questions on gambling behavior to assess the level and location of gambling among college students and negative consequences experienced by the students. The questions were taken from the Minnesota Student Survey (Stinchfield, Kushner, & Winters, 2005; Winters & Anderson, 2000), and used with the permission of the Minnesota Department of Education.

The survey is intended to provide meaningful data at both the campus and state levels, to understand substance use problems and develop effective plans for reducing substance use by college students. Each participating school receives a report of their results. Data from each participating school is the property of that institution, and is not released without their permission. The online survey instrument can be accessed at <http://www.drugs.indiana.edu/collegesurvey/survey2011/survey01.php>. A copy of the paper version is included at the end of this report.

All two- and four-year colleges in Indiana were invited to participate in the survey. Nine colleges participated in the 2011 survey, including eight four-year colleges and one two-year college. Participating schools could choose from either an online or paper format, with all schools using the online version. Students were surveyed either before spring break or at least one month after spring break. The period immediately following spring break was avoided because of the historically higher rates of use during that time. For the online version, students were surveyed during a two-week period. They received an e-mail invitation which included a link to the survey website, and a reminder e-mail midway through the survey period. Incentives were offered by some schools to improve participation rates (e.g., gift cards, athletic tickets, etc.).

Selection of students was determined by the participating school. One school chose to survey a stratified sample of their population, while all others surveyed an entire population of the student body; e.g. all students, all undergraduate students, all full-time students, etc. Participation in the survey was voluntary and anonymous. The survey procedures were reviewed by the Indiana

University-Bloomington Institutional Review Board to ensure protection of participants as required by federal Human Subjects regulations.

A total of 45,977 students were invited to participate in the 2011 Indiana College Substance Use Survey. A total of 5,788 students responded to the survey, for a response rate of 12.6%. The overall response rate was skewed by two schools who invited all students currently registered for any class (over 10,000 students each) with only 2.6% and 3.5% of them responding, respectively. All other schools had response rates between 8.2% and 52.0%.

Table 2. Response Rate, 2011

Number of students invited to participate	Number of respondents	Response Rate
45,977	5,788	12.6%

Three criteria were used to clean the data. Surveys were discarded if any of the following conditions were met:

- missing gender information,
- inconsistent responses on substance use across time measures (monthly vs. annually) for more than one-third of the substances queried, and
- pharmacologically-implausible patterns of responses (i.e., a combination of drugs and frequencies of use whose cumulative effect would be lethal).

A total of 484 surveys were rejected due to meeting at least one of the criteria, leaving 5,304 usable surveys (91.6%).

Table 3. Number of Usable Questionnaires, 2011

	Frequency	Percent
No gender reported	420	7.3
Surveys rejected due to error check	64	1.1
Total number of usable surveys	5,304	91.6
Total	5,788	100.0

KEY FINDINGS

PREVALENCE AND FREQUENCY OF SUBSTANCE USE

PAST-YEAR PREVALENCE OF USE

Over three-fourths of the Indiana college students who participated in the 2011 Indiana College Substance Use Survey (76.0%) reported drinking alcohol in the past year, including 69.5% of the students under 21 years of age. These rates indicate the pervasiveness and widespread use of alcohol among the college students participating in the survey. Additionally, almost three in ten students reported using marijuana (28.4%) and cigarettes (28.1%), and over one-fourth reported smoking tobacco with a hookah or water pipe (26.6%). Marijuana is the most widely used illicit drug, followed by use of prescription medication not prescribed to the student (11.3%). Annual prevalence rates for all substances investigated are provided in Table 4.

Male students used almost all substances at significantly higher rates than female students during the past year, including tobacco, marijuana, cocaine, hallucinogens and misuse of prescription medication. Over one-third of the male students (35.5%) had used marijuana in the past year, compared to one-quarter (24.4%) of the female students. One in seven male students (14.2%) reported taking prescription medications not prescribed to them, compared to one in eleven female students (9.6%). The rates of alcohol use were nearly identical for both genders.

While students 21 or older were more likely to report alcohol use in the past year (81.7% vs. 69.5%), the younger students reported significantly higher rates of marijuana use (32.5% vs. 24.8%). Use of tobacco products also varied by age, with students 21 or older reporting significantly higher rates of cigarette use, while younger students reported higher rates of smoking tobacco with a hookah or water pipe and smoking cigars.

Students at public institutions reported significantly higher annual prevalence rates for more than half of the substances queried, including alcohol, marijuana, cocaine, hallucinogens, prescription medications, cigarettes, and smoking tobacco with a hookah/water pipe.

PAST-MONTH PREVALENCE OF USE

Seven in ten of the Indiana students (70.3%) drank alcohol in the past month, including over three-fifths of the underage students (62.7%). One in five of the students (20.4%) smoked cigarettes in the past month, and 19.3% reported marijuana use over the same period. Following alcohol, tobacco and marijuana, misuse of prescription medication was the next most widely used substance by the students in the past month, with 6.2% reporting taking prescription medication not prescribed to them (Table 5).

As with the annual prevalence rates, the male college students reported statistically higher rates of use within the past month for nearly every substance investigated on the survey. Over one-fourth of the male students (25.8%) reported using marijuana in the past month compared to 15.6% of the female students. Male students used all forms of tobacco at significantly greater rates, with 24.0% smoking cigarettes, 20.2% smoking cigars, 15.9% using a water pipe, and 11.0% using smokeless tobacco. Almost one in five of the females (18.3%) smoked cigarettes and one in ten (9.8%) smoked tobacco with a water pipe. As with annual prevalence, rates of alcohol use in the past month were not significantly different between the genders.

Parallel variations by students' ages were observed between the annual and monthly use of substances, with students 21 or older reporting higher rates of alcohol use in the past month (77.0% vs. 62.7%), but younger students reporting higher rates of marijuana use (23.2% vs. 15.9%). Use of tobacco products in the past month also mirrored the annual prevalence findings, with students 21 or older reporting significantly higher rates of cigarette use while younger students reported higher rates of smoking tobacco with a hookah or water pipe and smoking cigars.

Students at public institutions were much more likely to use almost all of the substances investigated, including alcohol (72.8% vs. 66.2%). One-fourth of the students at public institutions (24.7%) reported using marijuana in the past month, compared to one in ten of the students at a private institution (10.3%). Students at public institutions were more than twice as likely to report using prescription medications not prescribed to them (7.9% vs. 3.5%).

Table 4. Percentage of Students Reporting Use of Select Substances in the Past Year, by Select Demographic Characteristics, 2011

Substance	All Students			Gender		Age		Type of Institution	
	Indiana	U.S. ^a		Males	Females	Under 21	21 or Over	Private	Public
Cigarettes	28.1	28.1	31.8	26.0	26.0	25.4	30.5	23.1	31.1
Cigars	21.2	21.2	39.0	11.2	11.2	23.4	19.4	20.4	21.8
Chewing/smokeless tobacco	7.9	7.9	17.1	2.7	2.7	8.1	7.8	8.4	7.6
Smoking tobacco with hookah/water pipe	26.6	26.6	31.7	23.7	23.7	30.5	23.2	21.2	29.8
Alcohol	76.0	78.6	77.4	75.2	75.2	69.5	81.7	72.0	78.4
Marijuana	28.4	32.7	35.5	24.4	24.4	32.5	24.8	17.5	35.0
Cocaine	3.6	3.5	4.5	3.1	3.1	3.5	3.7	2.3	4.4
Hallucinogens	6.0	4.9	8.9	4.3	4.3	6.6	5.4	3.3	7.6
Heroin	1.6	0.2	1.5	1.7	1.7	1.7	1.5	1.9	1.4
Inhalants	2.1	1.7	2.3	1.9	1.9	2.2	2.0	2.1	2.0
Prescription medications not prescribed to student	11.3	11.3	14.2	9.6	9.6	11.6	11.0	7.6	13.5
Medications prescribed to student, but misused	3.8	3.8	3.9	3.7	3.7	4.2	3.4	3.1	4.2
Over-the-counter medications misused	3.0	3.0	3.6	2.6	2.6	3.4	2.6	2.8	3.1
Methamphetamine	1.7	0.4	1.6	1.8	1.8	1.7	1.7	1.8	1.7
Other illegal drugs	2.5	2.5	3.3	2.1	2.1	2.6	2.5	2.2	2.7

^a National data are from the 2010 Monitoring the Future survey, Johnston et al., 2011.

* p < .05, ** p < .01, *** p < .001

Table 5. Percentage of Students Reporting Use of Select Substances in the Past Month, by Select Demographic Characteristics, 2011

Substance	All Students			Gender		Age		Type of Institution	
	Indiana	U.S. ^a		Males	Females	Under 21	21 or Over	Private	Public
Cigarettes	20.4	16.4	24.0	24.0	18.3	17.8	22.6	15.9	23.0
Cigars	10.3		20.2	20.2	4.7	11.6	9.2	10.4	10.2
Chewing/smokeless tobacco	4.4		11.0	11.0	0.6	4.5	4.3	4.4	4.3
Smoking tobacco with hookah/water pipe	12.0		15.9	15.9	9.8	14.8	9.6	9.4	13.6
Alcohol	70.3	65.0	71.3	71.3	69.7	62.7	77.0	66.2	72.8
Marijuana	19.3	17.5	25.8	25.8	15.6	23.2	15.9	10.3	24.7
Cocaine	0.9	1.0	1.4	1.4	0.6	1.0	0.8	0.2	1.4
Hallucinogens	2.1	1.4	3.6	3.6	1.3	2.7	1.7	0.8	3.0
Heroin	0.0	+	0.1	0.1	0.0	0.1	0.0	0.1	0.0
Inhalants	0.2	0.5	0.5	0.5	0.1	0.4	0.1	0.1	0.4
Prescription medications not prescribed to student	6.2		7.8	7.8	5.3	6.1	6.3	3.5	7.9
Medications prescribed to student, but misused	1.4		1.4	1.4	1.4	1.6	1.2	0.7	1.8
Over-the-counter medications misused	0.8		1.1	1.1	0.6	1.0	0.6	0.4	1.0
Methamphetamine	0.1	+	0.2	0.2	0.0	0.1	0.0	0.0	0.1
Other illegal drugs	0.5		0.9	0.9	0.3	0.6	0.4	0.3	0.7

^a National data are from the 2010 Monitoring the Future survey, Johnston et al., 2011.. + indicates a prevalence rate of less than 0.05%.

* p < .05, ** p < .01, *** p < .001

PREVALENCE OF BINGE DRINKING

Binge drinking was defined in the Indiana College Substance Use Survey as four or more drinks in one sitting for females and five or more drinks in one sitting for males. This gender-specific standard follows the definition established by the National Institute on Alcohol Abuse and Alcoholism (NIAAA, 2004). As a group, college students are significantly more likely to binge drink than non-college peers (Johnston et al., 2009). Students who binge drink experience significantly more adverse consequences than those who do not. One study found that college students who binge drank occasionally were five times more likely to experience five or more alcohol-related problems compared to students who did not binge drink. Students who were frequent binge drinkers (binge drinking three or more times in the past two weeks) were 4 to 15 times more likely to experience a particular problem than non-binge drinkers (Wechsler et al., 2000b).

The 2011 Indiana college Substance Use Survey included two questions on binge drinking: in the past month and in the past two weeks. Half of the students who participated in the 2011 survey (50.3%) reported binge drinking in the past month. Male students reported a statistically higher prevalence rate than female students (56.4% vs. 46.9%), as did students at public institutions compared to students attending private institutions (55.7% vs. 41.4%). There was no statistically significant difference between the percentage of students under 21 who reported binge drinking in the past month compared to those 21 or older. See Table 6.

Two out of five of the students surveyed (40.2%) reported binge drinking in the past two weeks, with 47.8% of the male students reporting the behavior compared to 35.9% of the female students (Table 7). Almost one in four of the students (24.0%) reported binge drinking once or twice in the past two weeks, and nearly one in six (16.1%) reported binge drinking three or more times in the same period (Figure 1).

Table 6. Percentage of Students Reporting Binge Drinking in the Past Month, by Select Demographic Characteristics, 2011

All Students	Gender		***	Age		Type of Institution		***
	Males	Females		Under 21	21 or Over	Private	Public	
50.3	56.4	46.9		49.6	51.0	41.4	55.7	

Note. Students who responded “No” when asked if they drank alcohol in the past six months automatically skipped over the binge drinking questions on the online survey. They are considered as “No binge drinking” in the binge drinking rate calculations. Binge drinking was defined as consuming 4 or more drinks in one sitting for females and 5 or more drinks in one sitting for males.

***p < .001

Table 7. Percentage of Students Reporting Binge Drinking in the Past Two Weeks, by Select Demographic Characteristics, 2011

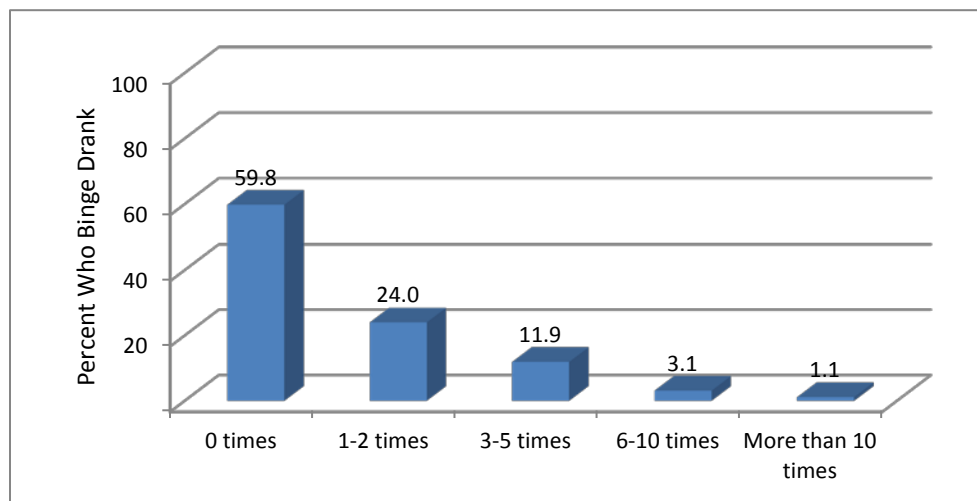
All Students		Gender		***	Age		Type of Institution		***
Indiana	U.S. ^a	Males	Females		Under 21	21 or Over	Private	Public	
40.2	37.0	47.8	35.9		40.5	40.0	30.1	46.2	

Note. Students who responded “No” when asked if they drank alcohol in the past six months automatically skipped over the binge drinking questions on the online survey. They are considered as “No binge drinking” in the binge drinking rate calculations. Binge drinking was defined as consuming 4 or more drinks in one sitting for females and 5 or more drinks in one sitting for males.

^a National data are from the 2010 Monitoring the Future survey, Johnston et al., 2011.

***p < .001

Figure 1. Frequency of Binge Drinking in the Past Two Weeks, 2011



Note. Students who responded “No” when asked if they drank alcohol in the past six months automatically skipped over the binge drinking questions on the online survey. They are considered as “0 times” in the binge drinking rate calculations.

PRESCRIPTION DRUG MISUSE

According to the Office of National Drug Control Policy, prescription drug abuse is the nation's fastest-growing drug problem (ONDCP, n.d.). Adderall was the most commonly misused prescription medication by students participating in the Indiana College Substance Use Survey. One in ten of the students (9.9%) misused Adderall in the past six months. Male students and students at public institutions were more likely to misuse Adderall than their counterparts. Approximately one in seven male students (13.8%) reported misusing Adderall in the past six months, and approximately one in eight students attending public institutions (13.0%) did so.

Vicodin was the second most commonly misused prescription medication, with 4.3% of the students misusing it in the past six months. Male students and students at public institutions reported statistically higher rates of use than their counterparts. Both Xanax and Codeine were misused by 3.0% of the students. Unlike most other medications, male and female students used Xanax and Ritalin at nearly equal rates.

Male students and students attending public institutions used almost all of the prescription medications at statistically higher rates than their counterparts. There was no significant difference in misuse of any of the prescription medications by age categories. See Table 8.

Table 8. Percentage of Students Reporting Prescription Drug Misuse in the Past Six Months, by Select Demographic Characteristics, 2011

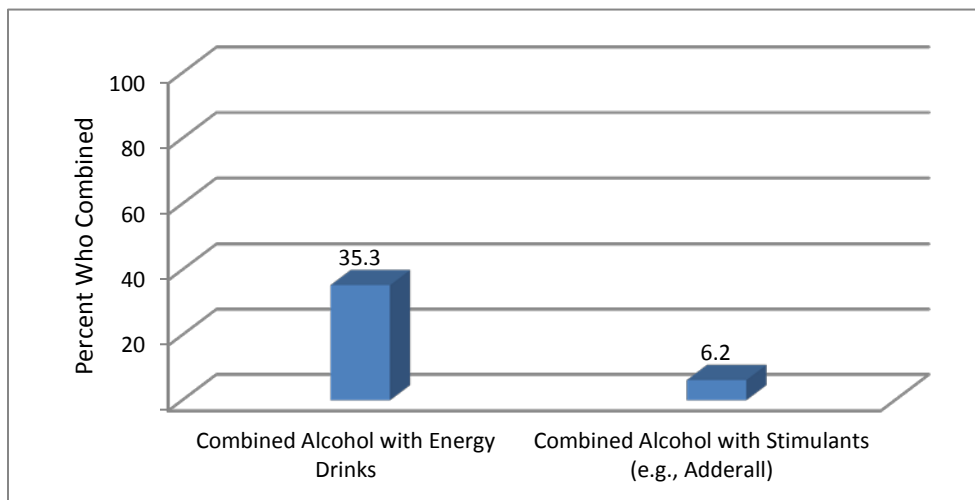
Substance	All Students		Gender		Age		Type of Institution	
		Males	Females	Under 21	21 or Over	Private	Public	
Adderall	9.9	13.8	7.8	10.4	9.5	4.9	13.0	***
Ritalin	1.5	1.9	1.3	1.7	1.3	1.1	1.7	
Xanax	3.0	3.4	2.7	2.7	3.2	1.5	3.9	***
Codeine	3.0	4.5	2.1	3.1	2.8	1.6	3.8	***
Vicodin	4.3	6.1	3.3	4.3	4.4	3.4	4.9	*
Lortab	1.1	1.5	0.8	0.9	1.3	0.3	1.5	***
Percocet	1.1	1.6	0.8	1.2	1.0	0.7	1.3	*
Oxycontin	1.0	1.7	0.6	1.1	0.9	0.6	1.3	*
Morphine	0.6	0.9	0.4	0.6	0.6	0.4	0.8	
Methadone	0.3	0.3	0.2	0.4	0.1	0.1	0.4	
Steroids	0.2	0.5	0.1	0.2	0.2	0.3	0.2	

* p < .05, **p < .01, ***p < .001

COMBINING ALCOHOL WITH ENERGY DRINKS OR OTHER STIMULANTS

Over one-third of the students (35.3%) reported combining alcohol with energy drinks in the past six months, and 6.2% combined alcohol with other stimulants, such as Adderall (Figure 2).

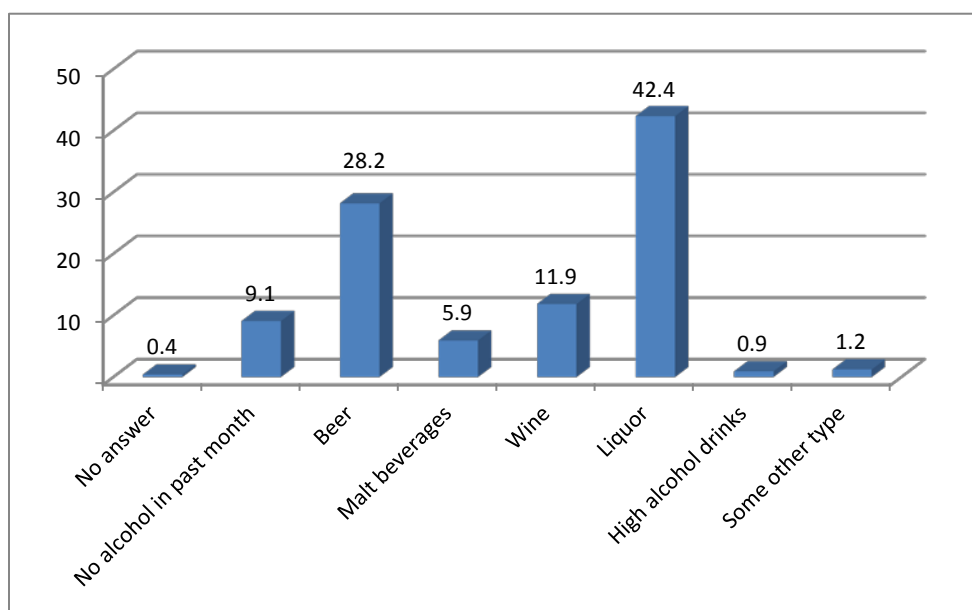
Figure 2. Percentage of Students Who Drank Alcohol in Past Six Months, Who Combined Alcohol with Energy Drinks or Other Stimulants, 2011 (n = 4,239)



USUAL TYPE OF ALCOHOL

Almost half of the students who drank alcohol in the past six months (42.4%) indicated that liquor was the most commonly used form of alcohol they consumed. Less than three in ten of the students (28.2%) indicated that beer was the usual type of alcohol they consumed (Figure 3).

Figure 3. Percentage of Students Who Drank Alcohol in Past Six Months, Who Reported Select Categories as the Usual Type of Alcohol They Drank in the Past Month, 2011 (n = 4,239)



REASONS FOR ALCOHOL USE

Almost ninety percent of the students who drank alcohol in the past six months (85.6%) reported doing so in order to have a good time with their friends. Nearly two-thirds of the students (62.3%) reported drinking alcohol to relax or relieve tension, and slightly less than half (46.4%) did so to feel good. One in five students (20.3%) indicated that they used alcohol because of boredom/nothing else to do.

Male students were more likely to indicate drinking alcohol for most of the reasons investigated, except “to get away from my problems” where more female than male students indicated this as a reason they drink (14.6% vs. 11.7%, respectively).

Students under 21 years old were more likely to report drinking alcohol to have a good time with friends, to feel good, because of boredom, to get away from their problems, and to fit in with a group they like, while students over 21 were more likely to cite getting to sleep and to relax or relieve tension as reasons for drinking (Table 9).

Students at public institutions reported higher rates of drinking alcohol for a majority of the reasons investigated. Almost nine in ten of the students at public institutions who drank alcohol in the past six months (87.9%) indicated that “to have a good time with my friends” was a reason they drink, compared to 81.4% of the students at private institutions who drink alcohol. Over half of the students at public institutions who drink alcohol (52.5%) reported drinking to feel good or get high, compared to just over one-third of the students at private institutions who drink (35.3%).

Table 9. Percentage of Students Who Drank Alcohol in Past Six Months, Who Indicated Select Reasons for Drinking Alcohol, 2011 (n = 4,239)

Substance	All Students		Gender		Age		Type of Institution	
		Males	Females	Under 21	21 or Over	Private	Public	
To experiment	18.7	18.6	18.8	26.7	12.8	19.6	18.2	
Because I am "hooked"	2.4	2.5	2.4	2.2	2.6	1.8	2.8	*
To relax or relieve tension	62.3	62.5	62.3	57.5	65.9	60.7	63.3	
To feel good or get high	46.4	53.4	42.4	52.3	42.1	35.3	52.5	***
To seek deeper insights and understanding	5.9	10.1	3.4	6.2	5.6	5.0	6.3	
To have a good time with my friends	85.6	86.5	85.1	89.1	83.0	81.4	87.9	***
To fit in with a group I like	12.3	15.3	10.6	14.7	10.5	8.4	14.5	***
Boredom, nothing else to do	20.3	24.3	18.0	23.1	18.3	19.6	20.7	
Because of anger or frustration	16.7	16.5	16.8	16.3	16.9	17.2	16.4	
To get through the day	3.2	4.2	2.6	2.6	3.5	2.7	3.4	
To increase the effects of other drugs	3.7	6.4	2.1	4.3	3.2	2.5	4.3	**
To decrease the effects of other drugs	1.4	2.3	0.9	1.1	1.5	0.5	1.9	***
To get to sleep	9.6	11.1	8.8	6.9	11.6	7.0	11.1	***
Because it tastes good	58.7	62.4	56.5	48.6	66.0	61.9	56.9	**
To get away from my problems	13.5	11.7	14.6	15.7	12.0	12.9	13.9	

* p < .05, **p < .01, ***p < .001

CONSEQUENCES OF SUBSTANCE USE

Consequences resulting from alcohol use include violence, unintentional injuries, risky sexual behavior, diminished academic performance, and use of other drugs. Many times the negative consequences from college students' alcohol use affect not only the individuals consuming the alcohol but those around them as well (NIAAA, 2004/2005; Wechsler & Nelson, 2008). Researchers estimated that alcohol-related problems experienced by 18-24 year old U.S. college students in 2001 included 1,700 student deaths from alcohol-related injuries and approximately 599,000 unintentional injuries while under the influence of alcohol. The researchers estimated the level of violence associated with alcohol use by college students to be approximately 696,000 students assaulted by other students who had been drinking, including 97,000 sexual assaults (Hingson et al., 2005).

The Indiana College Substance Use Survey asked students to indicate the number of times they experienced select consequences due to their drinking or drug use. Students reported alarming levels of adverse consequences as a result of their drinking. Almost two-thirds of the students who drank alcohol within the past six months (63.2%) reported having a hangover. Approximately three in ten (29.4%) reported blacking out (forgetting where they were or what they did) and one in seven (14.2%) had driven a car while under the influence. One in eight of the students (12.8%) reported engaging in risky sexual behavior and one in ten (10.0%) had experienced unwanted sexual attention. The impact of drinking on academic performance was also confirmed by the survey participants, with 17.8% of the students who drank alcohol in the past six months reporting missing classes or assignments as a result of their drinking. Over one-fourth of the students who drank alcohol in the past six months (28.8%) reported feeling bad about their drinking. (See Table 10)

Approximately one-quarter of the students who used drugs in the past six months reported the following consequences as a result of their drug use: driving a car while under the influence (23.0%), feeling bad/guilty about their drug use (24.5%), and abusing more than one drug at a time (27.0%). One in nine students who used drugs in the past six months (11.4%) said they missed class or an assignment due to their drug use. (See Table 11)

Table 10. Percentage of Students Who Drank Alcohol in the Past Six Months, Who Reported Select Consequences as a Result of Their Drinking, 2011 (n = 4,239)

Consequence	%
Friends or family members worried or complained about your drinking	12.5
Had a hangover	63.2
Felt bad or guilty about your drinking	28.8
Been unable to stop drinking when you wanted to	8.9
Created problems between you and your friends or family members	13.2
Gotten into trouble at work or school because of drinking	4.4
Gone to anyone for help to reduce your drinking	1.7
Been hurt or injured because of your drinking	11.7
Been ticketed or arrested because of your drinking	3.0
Been arrested for drunk driving	0.8
Driven a car while under the influence	14.2
Gotten into physical fights when drinking	4.8
Experienced unwanted sexual attention such as being touched when you don't want to be, forced kissing, etc.	10.0
Engaged in risky sexual behavior such as having unprotected sex or sex with someone you just met because you were drinking	12.8
Missed class or assignments	17.8
Forgot where you were or what you did (blacked out)	29.4
Seriously thought about suicide	2.1
Seriously tried to commit suicide	0.5

Table 11. Percentage of Students Who Used Drugs in the Past Six Months, Who Reported Select Consequences as a Result of Their Drug Use, 2011 (n = 1,753)

Consequence	%
Abused more than one drug at a time	27.0
Been unable to stop using drugs when you wanted to	8.5
Had blackouts or flashbacks as a result of drug use	10.3
Felt bad or guilty about your drug use	24.5
Had friends or family members worry or complain about your drug use	10.7
Created problems between you and your friends or family members	7.8
Engaged in illegal activities in order to obtain drugs	6.7
Gotten into physical fights because you were using drugs	1.3
Experienced withdrawal symptoms (felt sick) when you stopped taking drugs	6.9
Had medical problems as a result of your drug use (e.g., memory loss, infections, convulsions, bleeding)	3.7
Driven a car while under the influence of drugs	23.0
Gotten in trouble at work or school because of your drug use	2.9
Been in vulnerable situations (e.g., could have been hurt and/or date raped when using drugs)	3.8
Engaged in risky sexual behavior such as having unprotected sex or sex with someone you just met because you were using drugs	6.4
Failed a class because of drug use	1.6
Missed class or assignments due to drug use	11.4

RISK FACTORS

AGE OF FIRST USE

Early onset of substance use has been correlated with the development of a range of substance-related problems, including involvement in motor vehicle crashes, unintentional injuries, and alcohol and/or drug dependence (Behrendt et al., 2009; Dawson et al, 2008; Hingson et al, 2006; Hingson & Wenxing, 2009). Individuals who begin drinking in their mid-teens are four times more likely to become alcohol dependent during their lifetime compared to those who do not drink before the age of 21 (Grant & Dawson 1998). The Indiana College Substance Use Survey asked students how old they were when they first used select substances. Responses consisted of two-year intervals for ages 10 through 17 (i.e., 10-11 years, 12-13 years, etc.), a three-year interval for students aged 18 through 20, a four-year interval for ages 21 through 25, and open-ended ranges for extreme responses (“under 10” or “26+”). The mean age of first use was calculated using the midpoints of the intervals and the upper and lower endpoints for the extreme responses.

The mean age of first time use of inhalants was the lowest of all substances investigated, at 15.5 years, followed by cigarettes (16.7 years). Over-the-counter medication misuse had the third-lowest average age of first time use at 16.9 years. Students reported an average age of initiation of 17.0 years for alcohol use and 17.3 years for marijuana use. Female students initiated use of cigarettes and hallucinogens at an earlier average age than male students, while male students initiated use of cigars and smoking tobacco with a hookah/water pipe at an earlier average age.

Students at public institutions initiated use of all forms of tobacco except cigarettes, and of alcohol, marijuana, and hallucinogens at a younger average age than students at private institutions (Table 12).

Table 12. Average Age of First Time Use of Select Substances, 2011

Substance	All Students	Gender		Type of Institution		
		Males	Females	Private	Public	
Cigarettes	16.7	16.9	16.6 *	16.8	16.7	
Cigars	17.8	17.5	18.1 ***	18.2	17.5	***
Chewing/smokeless tobacco	17.5	17.5	17.5	17.8	17.4	*
Smoking tobacco with hookah/water pipe	18.2	18.1	18.3 *	18.8	18.0	***
Alcohol	17.0	17.0	17.0	17.6	16.7	***
Marijuana	17.3	17.3	17.3	17.6	17.2	***
Cocaine	18.9	19.1	18.7	18.9	18.9	
Hallucinogens	18.5	18.7	18.2 *	19.0	18.4	*
Heroin	18.0	18.2	17.8	18.6	17.8	
Inhalants	15.5	15.9	15.1	15.7	15.5	
Prescription medications not prescribed to student	18.0	17.8	18.1	18.0	17.9	
Medications prescribed to student, but misused	17.9	17.7	18.1	18.3	17.8	
Over-the-counter medications misused	16.9	17.1	16.7	17.3	16.8	
Methamphetamine	18.9	18.9	18.9	19.9	18.8	
Other illegal drugs	18.1	18.0	18.2	17.6	18.3	

Note: Average age was calculated using the mid-points of the age ranges provided, and the upper and lower endpoints for the extreme responses.

* p < .05, ***p < .001

ALCOHOL AVAILABILITY

College students' access to alcohol is strongly correlated with increased levels of drinking (Wechsler et al., 2000a). Students under 21 routinely report that alcohol is easy to obtain from a variety of sources (Brown et al., 2009; Fabian et al., 2008; Wechsler et al., 2002). To help understand how underage students are getting alcohol, the Indiana survey asked underage students who drink alcohol to identify the three easiest ways they obtain it. Over half of the students (53.0%) reported that older friends were the easiest way to get alcohol, and almost three-fourths of the students (73.0%) listed older friends as one of the top two ways. "Off-campus private parties" was the most common response for both the second and third easiest method for obtaining alcohol. Over half of the survey respondents (54.1%) selected off-campus private parties as one of the top three easiest ways to access alcohol (Table 13). These data highlight the substantial role that older friends and acquaintances play in how underage students obtain alcohol, and underscore the importance of targeting this group when trying to reduce underage students' access to alcohol.

Students under 21 were asked if they had bought alcohol from a retailer in the past six months, with 6.7% reporting that they had. Of those students, over one-third (34.8%) were able to purchase it without an ID, while 30.5% reported using someone else's ID and 29.9% using a fake ID as the most common method for purchasing it (Figure 5).

Figure 6 illustrates the locations underage students listed as the easiest place to purchase alcohol, with bars being selected most often (36.0%), followed by liquor stores (16.5%) and restaurants (14.6%).

Table 13. Three Easiest Ways of Getting Alcohol as Reported by Students Who Are Under 21 and Who Drink Alcohol, 2011 (n = 1,771)

	Most common response	2 nd most common response	3 rd most common response
First Easiest	Older friends (53.0%)	Off-campus private parties (12.0%) Fraternity or sorority houses (12.0%)	-
Second Easiest	Off-campus private parties (24.5%)	Older friends (20.0%)	On-campus private parties (12.5%)
Third Easiest	Off-campus private parties (17.6%)	Someone else on campus (14.6%)	Fraternity or sorority houses (14.3%)

Notes: Students who reported alcohol use in the past month or in the past year are included. Students were asked to identify the first, second, and third easiest ways that they obtain alcohol. The top three responses in each category are reported in the table.

Figure 4. Percentage of Students Under 21 Who Reported Purchasing Alcohol from a Retailer in the Past Six Months, 2011 (n = 2,462)

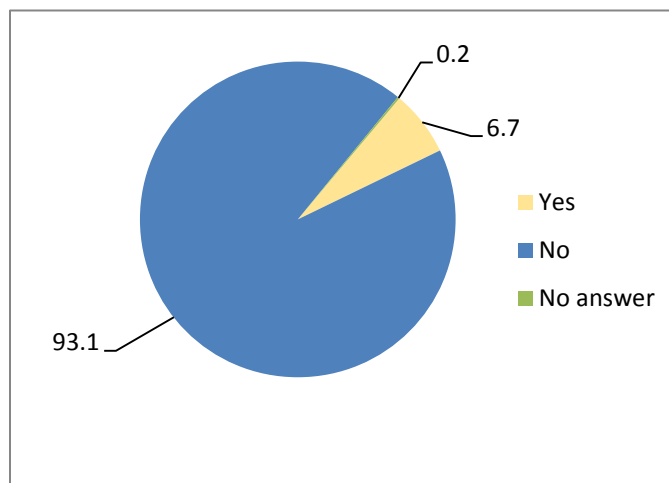


Figure 5. Percentage of Students Under 21 Who Have Purchased Alcohol from a Retailer, Who Reported Select Methods as the Most Common for Purchasing Alcohol, 2011 (n = 164)

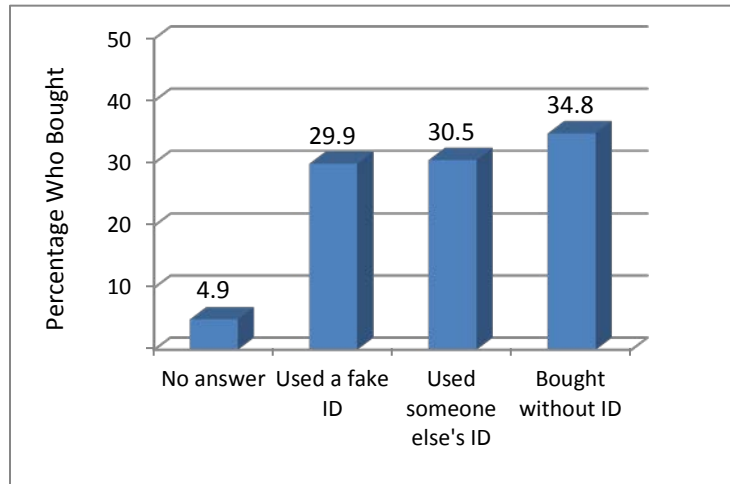
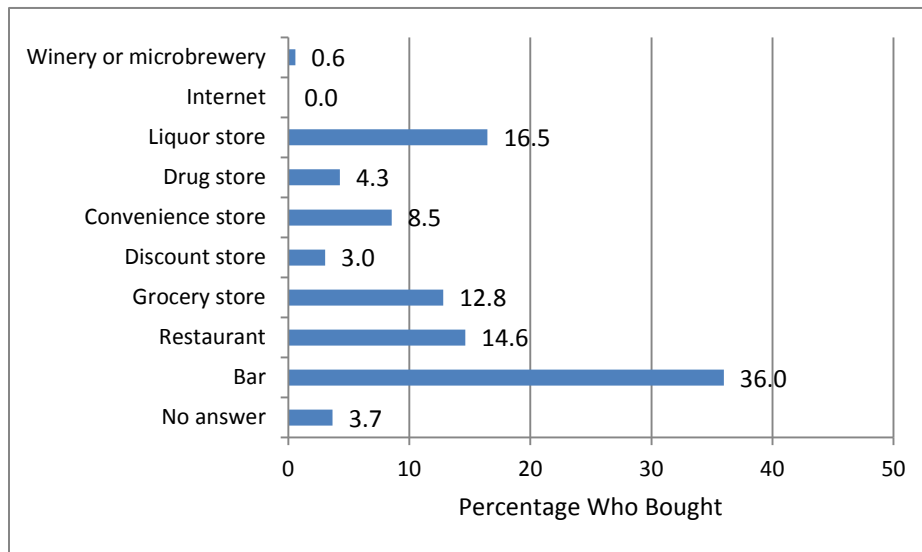


Figure 6. Percentage of Students Under 21 Who Reported Purchasing Alcohol by Select Locations as the Easiest Place to Purchase Alcohol, 2011 (n = 164)



PERCEPTIONS OF PEER BEHAVIORS AND BELIEFS

Many college students overestimate both the amount of drinking and drug use, and the approval of use by their peers (Borsari & Carey, 2003; Martens et al., 2006). These misperceptions have been shown to be positively correlated with the student's own drinking and drug use levels. Students who believe their peers drink or use drugs are more likely to drink or use drugs themselves (Kilmer et al., 2006; Neighbors et al 2007; Perkins et al., 2005). The Indiana College Substance Use Survey asked students how many alcoholic drinks they thought the typical student at their school had the last time he or she partied/socialized. Students could provide any figure between 0 – 99. The average of the responses was 6.8 drinks. Responses did not differ significantly between students by gender, age categories (under 21 vs. 21 or older), or by type of institution (private/public). The average of the responses is above the threshold for binge drinking, indicating that on average survey respondents thought the typical student binge drank the last time he or she partied. However, the students' responses on their own binge drinking indicate that approximately two-fifths (40.2%) actually binge drank in the past two weeks. This discrepancy between the percentage of students reporting binge drinking and the average perception of the "typical" student as having binge drank suggests that the students surveyed do indeed overestimate the amount of drinking by their peers (Table 14).

The survey also asked participants how they thought other students on their campus felt about using certain substances. Less than half of the students (40.9%) thought their peers would disapprove (somewhat or strongly) of having five or more drinks in one sitting, and only one-third (35.5%) thought their peers would disapprove of taking one or two drinks nearly every day. Only one in seven of the students (14.6%) thought their peers would disapprove (somewhat or strongly) of trying marijuana once or twice, and less than one-fourth (22.7%) felt their peers would disapprove of smoking it occasionally. Less than half of the students (44.6%) thought their peers would somewhat or strongly disapprove of trying amphetamines such as Adderall once or twice (Table 15).

Table 14. Mean Number of Drinks Respondents Thought the Typical Student Consumed the Last Time He/She “Partied/Socialized”, 2011 (range = 0 – 99)

	All Students	Gender		Age		Type of Institution	
		Males	Females	Under 21	21 or Over	Private	Public
Mean	6.8	7.1	6.6	6.8	6.8	6.7	6.8
Standard Deviation	8.6	10.1	7.6	8.1	8.9	8.2	8.8

Table 15. Percentage of Students Who Thought Other Students on Campus Would Approve or Disapprove of Select Behaviors, 2011

	Strongly approve	Somewhat approve	Neither approve or disapprove	Somewhat disapprove	Strongly disapprove	No answer
Trying marijuana once or twice	19.5	37.9	27.4	7.4	7.2	0.7
Smoking marijuana occasionally	10.9	34.8	30.6	13.0	9.7	1.0
Smoking marijuana regularly	5.0	18.7	28.8	28.2	18.6	0.8
Trying cocaine once or twice	1.2	7.0	16.5	34.8	39.8	0.8
Taking cocaine regularly	0.6	1.7	10.4	17.6	68.6	1.1
Trying amphetamines (e.g., Adderall, Ritalin) once or twice	7.6	20.4	26.6	19.1	25.5	0.9
Taking amphetamines regularly	2.2	9.6	19.8	24.5	42.6	1.5
Having one or two alcoholic drinks nearly every day	10.0	23.1	30.4	22.6	12.9	1.0
Having three or four alcoholic drinks nearly every day	4.5	12.6	22.0	29.5	30.5	0.9
Having five or more alcoholic drinks in one sitting	11.1	20.5	26.6	18.7	22.2	0.9
Taking steroids for body building or improved athletic performance	1.6	6.8	22.7	28.4	39.5	1.0

GAMBLING BEHAVIORS

Opportunities for gambling have increased rapidly since the 1990's, both nationally and in Indiana. In 1989 the State of Indiana began operating the Hoosier Lottery. River boat casinos and horse tracks were approved by the Indiana legislature in the mid-1990s, and in 2007 the State allowed slot machines to be placed in horse parks. The advent of online gambling and the rapid growth in the popularity of poker have also added to the current environment of gambling. A recent national survey of 18-21 year olds (Barnes et al., 2010) found that 75% of the college students reported gambling in the past year, which was similar to the rate reported by the non-college young adults surveyed. The rate of frequent gambling (weekly or more) was lower for U.S. college students (18%) than their non-college peers (25%). Male college students reported significantly higher prevalence rates of gambling (83% vs. 67%) and frequent gambling (31% vs. 6%) than the female students.

The most common form of gambling reported by Indiana students participating in the 2011 Indiana College Substance Use Survey was playing the lottery (31.9%), followed by playing cards at home (17.4%). Male Indiana students reported higher rates of gambling than female students for all gambling behaviors investigated. Over one-third of the male students (34.7%) played the lottery in the past year, compared to 30.3% of the female students. Three in ten male students (30.3%) played cards at home for money, compared to one in ten (10.0%) of the female students. Almost one-quarter of the male students (24.5%) gambled in betting pools and nearly one in five (19.3%) gambled at a casino. Students 21 or older reported significantly higher rates than the younger students for all gambling behaviors except playing cards at home and gambling at informal locations. Students at public institutions reported higher rates of gambling on-line and placing bets with bookies, while students at private institutions reported a higher rate of playing the lottery (Table 16).

Students were asked how frequently they gambled to assess the level of excessive gambling. Almost two percent of the students (1.9%) played the lottery at least once a week in the past year and almost one percent (0.9%) reported playing cards at home for money at least weekly (Figure 7). The most frequent location that students reported for gambling (other than online or playing the lottery) was at a casino (10.6%), followed by an apartment or house (7.2%) (Figure 8). The most common negative consequence of gambling reported by Indiana students was feeling bad about their gambling (4.4%), followed by financial issues (1.6%) (Table 17).

Table 16. Percentage of Students Reporting Gambling Behaviors in the Past Year, 2011

Gambling Behavior	All Students		Gender		Age		Type of Institution	
	Males	Females	Under 21	21 or Over	Private	Public		
Played cards at home	17.4	10.0 ***	17.5	17.3	16.6	17.9		
Gambled at a casino	14.9	12.5 ***	4.5	24.0 ***	16.0	14.3		
Gambled on-line	2.8	0.6 ***	2.2	3.4 **	2.0	3.4 **		
Gambled at informal locations (e.g., street corners, gambling houses)	1.5	0.6 ***	1.5	1.5	1.7	1.4		
Bet on fantasy football/basketball	7.6	2.6 ***	6.6	8.4 *	7.0	8.0		
Betting pools (e.g., March Madness)	12.0	5.0 ***	11.0	12.9 *	12.5	11.8		
Lottery	31.9	30.3 **	27.3	35.9 ***	35.8	29.6 ***		
Placed bet with bookie	1.2	0.4 ***	0.8	1.5 *	0.7	1.5 **		

* p < .05, **p < .01, ***p < .001

Figure 7. Percentage of Students Who Reported Weekly or More Frequent Gambling in the Past Year, by Gambling Category, 2011

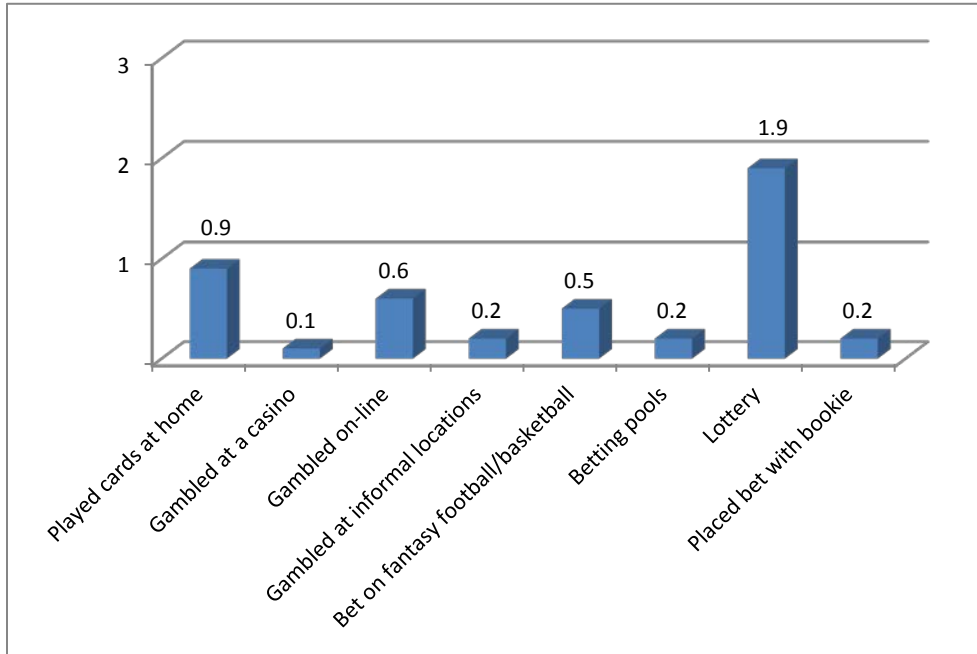


Figure 8. Most Frequent Location (Other Than Online or Lottery) in Past Year, 2011

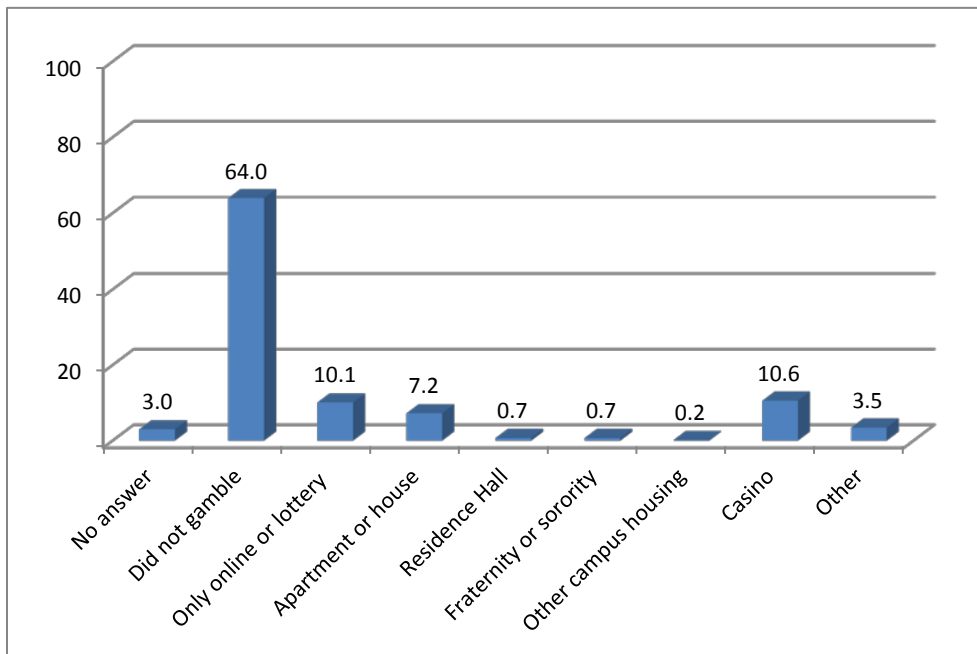


Table 17. Percentage of Students Who Gambled in the Past Year, Who Reported Select Consequences as a Result of Their Gambling, 2011 (n = 2,475)

Consequence	%
Academic problems (missed class, did poorly on exam, lower grades)	0.3
Issues with legal system	0.0
Financial issues	1.6
Felt bad about gambling	4.4
Poor physical health (sleep issues, depression, poor nutrition, poor hygiene)	0.4
Issues with friends and family (lied, strained relationships, arguments)	0.5

CHARACTERISTICS OF SURVEY PARTICIPANTS

Almost two-thirds of the survey respondents are female (63.8%). Slightly more than half (53.6%) are 21 years of age or older. Over four-fifths of the students (86.4%) are White and the vast majority (95.7%) are non-Hispanic. Respondents were nearly evenly divided among freshmen, sophomores, juniors, and seniors. Over ninety percent (92.0%) were full-time students and slightly more than half (54.3%) lived off-campus. Just over three in ten (31.5%) lived in residence halls. Almost two-thirds of the students (62.6%) attend public institutions, and 37.4% attend private institutions.

Table 18. Demographic Characteristics of Survey Participants, 2011

	Frequency	%
Gender		
Male	1,919	36.2
Female	3,385	63.8
Age		
Under 21	2,462	46.4
21 or older	2,842	53.6
Race		
White	4,582	86.4
Black/African American	208	3.9
Asian	226	4.3
Native American/Alaskan Native	16	0.3
Hawaiian/Pacific Islander	8	0.2
More than one race	149	2.8
Other	81	1.5
No answer	34	0.6
Ethnicity		
Hispanic	166	3.1
Non-Hispanic	5,077	95.7
No answer	61	1.2
Classification		
Freshman	1,342	25.3
Sophomore	1,381	26.0
Junior	1,192	22.5
Senior	1,179	22.2
Grad/professional	150	2.8
Not seeking a degree	15	0.3
Other	26	0.5
No answer	19	0.4

Table 18 (continued). Demographic characteristics of survey participants

	Frequency	%
Student status		
Full-time	4,879	92.0
Part-time	378	7.1
No answer	47	0.9
Location of residence		
On-campus	2,391	45.1
Off-campus	2,878	54.3
No answer	35	0.7
Type of residence		
House/apartment/etc.	2,982	56.2
Residence hall	1,673	31.5
Fraternity/Sorority	388	7.3
Other campus housing	135	2.5
Other	94	1.8
No answer	32	0.6
Type of institution		
Private	1,985	37.4
Public	3,319	62.6

REFERENCES

- Barnes, G.M., Welge, J.W., Hoffman, J.H., Tidwell, M.O. (2010) Comparisons of Gambling and Alcohol Use Among College Students and Noncollege Young People in the United States. *Journal of American College Health*, 58(5), 443-452.
- Behrendt, S., Wittchen, H. U., Höfler, M., Lieb, R., & Beesdo, K. (2009). Transitions from first substance use to substance use disorders in adolescence: Is early onset associated with a rapid escalation? *Drug and Alcohol Dependence*, 99(1-3), 68-78.
- Borsari, B., & Carey, K. B. (2003). Descriptive and Injunctive Norms in College Drinking: A Meta-Analytic Integration. *Journal of Studies on Alcohol*, 64(3), 331.
- Brown, R. L., Matousek, T. A., & Radue, M. B. (2009). Legal-Age Students' Provision of Alcohol to Underage College Students: An Exploratory Study. *Journal of American College Health*, 57(6), 611-618.
- Dawson, D. A., Goldstein, R. B., Chou, S. P., Ruan, W. J., & Grant, B. F. (2008). Age at first drink and the first incidence of adult-onset DSM-IV alcohol use disorders. *Alcoholism, Clinical And Experimental Research*, 32(12), 2149-2160.
- Fabian, L. E. A., Toomey, T. L., Lenk, K. M., & Erickson, D. J. (2008). How Do Underage College Students Get Alcohol? *Journal of Drug Education*, 38(1), 15-26.
- Grant, B. F., & Dawson, D. A. (1998). Age of onset of drug use and its association with DSM-IV drug abuse and dependence: results from the National Longitudinal Alcohol Epidemiologic Survey. *Journal Of Substance Abuse*, 10(2), 163-173.
- Hingson, R.W., & Wenxing, Z. (2009). Age of Drinking Onset, Alcohol Use Disorders, Frequent Heavy Drinking, and Unintentionally Injuring Oneself and Others After Drinking. *Pediatrics*, 123(6), 1477-1484.
- Hingson, R.W., Heeren, T., & Winter, M.R. (2006). Age at drinking onset and alcohol dependence: age at onset, duration, and severity. *Archives Of Pediatrics & Adolescent Medicine*, 160(7), 739-746.
- Hingson, R.W., Heeren, T., Winter, M., & Wechsler, H. (2005). Magnitude of alcohol-related mortality and morbidity among U.S. college students age 18-24: Changes from 1998 to 2001. *Annual Review of Public Health*, 26, 259-279.
- Johnston, L.D., O'Malley, P.M., Bachman, J.G., & Schulenberg, J.E. (2009). *Monitoring the Future, National Survey Results on Drug Use, 1975-2008. Volume II: College Students and Adults Ages 19-50*. NIH Pub. No. 09-7403. Bethesda, MD: National Institute on Drug Abuse.
- Johnston, L.D., O'Malley, P.M., Bachman, J.G., & Schulenberg, J. E. (2011). *Monitoring the Future National Survey Results on Drug Use, 1975-2010. Volume II: College Students and Adults Ages 19-50*. Ann Arbor: Institute for Social Research, The University of Michigan.
- Kilmer, J. R., Walker, D. D., Lee, C. M., Palmer, R. S., Mallett, K. A., Fabiano, P., et al. (2006). Misperceptions of College Student Marijuana Use: Implications for Prevention. *Journal of Studies on Alcohol*, 67(2), 277-281.

- Martens, M. P., Page, J. C., Mowry, E. S., Damann, K. M., Taylor, K. K., & Cimini, M. D. (2006). Differences Between Actual and Perceived Student Norms: An Examination of Alcohol Use, Drug Use, and Sexual Behavior. *Journal of American College Health, 54*(5), 295-300.
- National Institute on Alcohol Abuse and Alcoholism (NIAAA) Interdisciplinary Team on Underage Drinking Research. (2004/2005). The Scope of the Problem. *Alcohol Research & Health, 28*(3), 111-120.
- National Institute on Alcohol Abuse and Alcoholism (NIAAA). (2002). A Call to Action: Changing the Culture of Drinking at U.S. Colleges. NIH Pub. No. 02-5010. Bethesda, MD: NIAAA.
- National Institute on Alcohol Abuse and Alcoholism (NIAAA). (2004). NIAAA council approves definition of binge drinking. *NIAAA Newsletter* (3), 3. Accessed at: http://pubs.niaaa.nih.gov/publications/Newsletter/winter2004/Newsletter_Number3.pdf
- Neighbors, C., Lee, C. M., Lewis, M. A., Fossos, N., & Larimer, M. E. (2007). Are Social Norms the Best Predictor of Outcomes Among Heavy-Drinking College Students? *Journal of Studies on Alcohol & Drugs, 68*(4), 556-565.
- Office of National Drug Control Policy (n.d.) Epidemic: Responding to America's Prescription Drug Abuse Crisis. Retrieved from <http://www.whitehouse.gov/ondcp/prescription-drug-abuse>.
- Perkins, H. W., Haines, M. P., & Rice, R. (2005). Misperceiving the College Drinking Norm and Related Problems: A Nationwide Study of Exposure to Prevention Information, Perceived Norms and Student Alcohol Misuse. *Journal of Studies on Alcohol, 470-478*.
- Stinchfield, R., Kushner, M. G., & Winters, K. C. (2005). Alcohol use and prior substance abuse treatment in relation to gambling problem severity and gambling treatment outcome. *Journal of Gambling Studies, 21*(3), 273-297.
- Wechsler, H., & Nelson, T. F. (2008). What We Have Learned From the Harvard School of Public Health College Alcohol Study: Focusing Attention on College Student Alcohol Consumption and the Environmental Conditions That Promote It. *Journal of Studies on Alcohol & Drugs, 69*(4), 481-490.
- Wechsler, H., Kuo, M., Lee, H., & Dowdall, G. W. (2000a). Environmental correlates of underage alcohol use and related problems of college students. *American Journal Of Preventive Medicine, 19*(1), 24-29.
- Wechsler, H., Lee, J. E., Kuo, M., & Lee, H. (2000b). College Binge Drinking in the 1990s: A Continuing Problem. *Journal of American College Health, 48*(5), 199.
- Wechsler, H., Lee, J. E., Nelson, T. F., & Kuo, M. (2002). Underage College Students' Drinking Behavior, Access to Alcohol, and the Influence of Deterrence Policies. *Journal of American College Health, 50*(5), 223.
- Winters, K. C., & Anderson, N. (2000). Gambling involvement and drug use among adolescents. *Journal Of Gambling Studies, 16*(2-3), 175-198.

FREQUENCY TABLES

Substance use during the last 12 months: Cigarettes

		Frequency	Percent	Valid Percent	Cumulative Percent
Valid	No answer	21	.4	.4	.4
	No	3791	71.5	71.5	71.9
	Yes	1492	28.1	28.1	100.0
	Total	5304	100.0	100.0	

Substance use during the last 12 months: Cigars

		Frequency	Percent	Valid Percent	Cumulative Percent
Valid	No answer	43	.8	.8	.8
	No	4134	77.9	77.9	78.8
	Yes	1127	21.2	21.2	100.0
	Total	5304	100.0	100.0	

Substance use during the last 12 months: Chewing or smokeless tobacco

		Frequency	Percent	Valid Percent	Cumulative Percent
Valid	No answer	76	1.4	1.4	1.4
	No	4808	90.6	90.6	92.1
	Yes	420	7.9	7.9	100.0
	Total	5304	100.0	100.0	

Substance use during the last 12 months: Smoking tobacco with hookah or water pipe

		Frequency	Percent	Valid Percent	Cumulative Percent
Valid	No answer	46	.9	.9	.9
	No	3848	72.5	72.5	73.4
	Yes	1410	26.6	26.6	100.0
	Total	5304	100.0	100.0	

Substance use during the last 12 months: Alcohol

		Frequency	Percent	Valid Percent	Cumulative Percent
Valid	No answer	13	.2	.2	.2
	No	1259	23.7	23.7	24.0
	Yes	4032	76.0	76.0	100.0
	Total	5304	100.0	100.0	

Substance use during the last 12 months: Marijuana

		Frequency	Percent	Valid Percent	Cumulative Percent
Valid	No answer	31	.6	.6	.6
	No	3766	71.0	71.0	71.6
	Yes	1507	28.4	28.4	100.0
	Total	5304	100.0	100.0	

Substance use during the last 12 months: Cocaine

		Frequency	Percent	Valid Percent	Cumulative Percent
Valid	No answer	80	1.5	1.5	1.5
	No	5033	94.9	94.9	96.4
	Yes	191	3.6	3.6	100.0
	Total	5304	100.0	100.0	

Substance use during the last 12 months: Hallucinogens

		Frequency	Percent	Valid Percent	Cumulative Percent
Valid	No answer	74	1.4	1.4	1.4
	No	4913	92.6	92.6	94.0
	Yes	317	6.0	6.0	100.0
	Total	5304	100.0	100.0	

Substance use during the last 12 months: Heroin

		Frequency	Percent	Valid Percent	Cumulative Percent
Valid	No answer	104	2.0	2.0	2.0
	No	5114	96.4	96.4	98.4
	Yes	86	1.6	1.6	100.0
	Total	5304	100.0	100.0	

Substance use during the last 12 months: Inhalants

		Frequency	Percent	Valid Percent	Cumulative Percent
Valid	No answer	91	1.7	1.7	1.7
	No	5104	96.2	96.2	97.9
	Yes	109	2.1	2.1	100.0
	Total	5304	100.0	100.0	

Substance use during the last 12 months: Prescription pills that are not prescribed to you

		Frequency	Percent	Valid Percent	Cumulative Percent
Valid	No answer	63	1.2	1.2	1.2
	No	4642	87.5	87.5	88.7
	Yes	599	11.3	11.3	100.0
	Total	5304	100.0	100.0	

Substance use during the last 12 months: Medications prescribed to you but used to get high

		Frequency	Percent	Valid Percent	Cumulative Percent
Valid	No answer	89	1.7	1.7	1.7
	No	5015	94.6	94.6	96.2
	Yes	200	3.8	3.8	100.0
	Total	5304	100.0	100.0	

Substance use during the last 12 months: Over-the-counter medications to get high

		Frequency	Percent	Valid Percent	Cumulative Percent
Valid	No answer	93	1.8	1.8	1.8
	No	5053	95.3	95.3	97.0
	Yes	158	3.0	3.0	100.0
	Total	5304	100.0	100.0	

Substance use during the last 12 months: Methamphetamine

		Frequency	Percent	Valid Percent	Cumulative Percent
Valid	No answer	99	1.9	1.9	1.9
	No	5114	96.4	96.4	98.3
	Yes	91	1.7	1.7	100.0
	Total	5304	100.0	100.0	

Substance use during the last 12 months: Other illegal drugs

		Frequency	Percent	Valid Percent	Cumulative Percent
Valid	No answer	502	9.5	9.5	9.5
	No	4667	88.0	88.0	97.5
	Yes	135	2.5	2.5	100.0
	Total	5304	100.0	100.0	

Number of days in the past month substance was used: Cigarettes

		Frequency	Percent	Valid Percent	Cumulative Percent
Valid	No answer	1085	20.5	20.5	20.5
	0 day	3139	59.2	59.2	79.6
	1-2 days	341	6.4	6.4	86.1
	3-5 days	127	2.4	2.4	88.5
	6-9 days	73	1.4	1.4	89.8
	10-19 days	92	1.7	1.7	91.6
	20-29 days	111	2.1	2.1	93.7
	All 30 days	336	6.3	6.3	100.0
	Total	5304	100.0	100.0	

Number of days in the past month substance was used: Cigars

		Frequency	Percent	Valid Percent	Cumulative Percent
Valid	No answer	1132	21.3	21.3	21.3
	0 day	3625	68.3	68.3	89.7
	1-2 days	416	7.8	7.8	97.5
	3-5 days	73	1.4	1.4	98.9
	6-9 days	31	.6	.6	99.5
	10-19 days	10	.2	.2	99.7
	20-29 days	12	.2	.2	99.9
	All 30 days	5	.1	.1	100.0
	Total	5304	100.0	100.0	

Number of days in the past month substance was used: Chewing or smokeless tobacco

		Frequency	Percent	Valid Percent	Cumulative Percent
Valid	No answer	1253	23.6	23.6	23.6
	0 day	3820	72.0	72.0	95.6
	1-2 days	91	1.7	1.7	97.4
	3-5 days	29	.5	.5	97.9
	6-9 days	18	.3	.3	98.2
	10-19 days	29	.5	.5	98.8
	20-29 days	30	.6	.6	99.4
	All 30 days	34	.6	.6	100.0
	Total	5304	100.0	100.0	

Number of days in the past month substance was used: Smoking tobacco with hookah or water pipe

		Frequency	Percent	Valid Percent	Cumulative Percent
Valid	No answer	1164	21.9	21.9	21.9
	0 day	3503	66.0	66.0	88.0
	1-2 days	439	8.3	8.3	96.3
	3-5 days	115	2.2	2.2	98.4
	6-9 days	45	.8	.8	99.3
	10-19 days	25	.5	.5	99.8
	20-29 days	10	.2	.2	99.9
	All 30 days	3	.1	.1	100.0
	Total	5304	100.0	100.0	

Number of days in the past month substance was used: Alcohol

		Frequency	Percent	Valid Percent	Cumulative Percent
Valid	No answer	411	7.7	7.7	7.7
	0 day	1163	21.9	21.9	29.7
	1-2 days	1000	18.9	18.9	48.5
	3-5 days	1022	19.3	19.3	67.8
	6-9 days	920	17.3	17.3	85.1
	10-19 days	663	12.5	12.5	97.6
	20-29 days	102	1.9	1.9	99.6
	All 30 days	23	.4	.4	100.0
	Total	5304	100.0	100.0	

Number of days in the past month substance was used: Marijuana

		Frequency	Percent	Valid Percent	Cumulative Percent
Valid	No answer	1100	20.7	20.7	20.7
	0 day	3180	60.0	60.0	80.7
	1-2 days	403	7.6	7.6	88.3
	3-5 days	162	3.1	3.1	91.3
	6-9 days	126	2.4	2.4	93.7
	10-19 days	110	2.1	2.1	95.8
	20-29 days	122	2.3	2.3	98.1
	All 30 days	101	1.9	1.9	100.0
	Total	5304	100.0	100.0	

Number of days in the past month substance was used: Cocaine

		Frequency	Percent	Valid Percent	Cumulative Percent
Valid	No answer	1272	24.0	24.0	24.0
	0 day	3984	75.1	75.1	99.1
	1-2 days	40	.8	.8	99.8
	3-5 days	3	.1	.1	99.9
	6-9 days	3	.1	.1	100.0
	10-19 days	1	.0	.0	100.0
	All 30 days	1	.0	.0	100.0
	Total	5304	100.0	100.0	

Number of days in the past month substance was used: Hallucinogens

		Frequency	Percent	Valid Percent	Cumulative Percent
Valid	No answer	1262	23.8	23.8	23.8
	0 day	3929	74.1	74.1	97.9
	1-2 days	95	1.8	1.8	99.7
	3-5 days	13	.2	.2	99.9
	6-9 days	3	.1	.1	100.0
	All 30 days	2	.0	.0	100.0
	Total	5304	100.0	100.0	

Number of days in the past month substance was used: Heroin

		Frequency	Percent	Valid Percent	Cumulative Percent
Valid	No answer	1281	24.2	24.2	24.2
	0 day	4021	75.8	75.8	100.0
	6-9 days	2	.0	.0	100.0
	Total	5304	100.0	100.0	

Number of days in the past month substance was used: Inhalants

		Frequency	Percent	Valid Percent	Cumulative Percent
Valid	No answer	1288	24.3	24.3	24.3
	0 day	4003	75.5	75.5	99.8
	1-2 days	8	.2	.2	99.9
	3-5 days	2	.0	.0	99.9
	6-9 days	2	.0	.0	100.0
	10-19 days	1	.0	.0	100.0
	Total	5304	100.0	100.0	

**Number of days in the past month substance was used: Prescription pills
that are not prescribed to you**

		Frequency	Percent	Valid Percent	Cumulative Percent
Valid	No answer	1230	23.2	23.2	23.2
	0 day	3744	70.6	70.6	93.8
	1-2 days	184	3.5	3.5	97.2
	3-5 days	90	1.7	1.7	98.9
	6-9 days	34	.6	.6	99.6
	10-19 days	15	.3	.3	99.9
	20-29 days	4	.1	.1	99.9
	All 30 days	3	.1	.1	100.0
	Total	5304	100.0	100.0	

**Number of days in the past month substance was used: Medications
prescribed to you but used to get high**

		Frequency	Percent	Valid Percent	Cumulative Percent
Valid	No answer	1272	24.0	24.0	24.0
	0 day	3959	74.6	74.6	98.6
	1-2 days	41	.8	.8	99.4
	3-5 days	16	.3	.3	99.7
	6-9 days	7	.1	.1	99.8
	10-19 days	5	.1	.1	99.9
	20-29 days	1	.0	.0	99.9
	All 30 days	3	.1	.1	100.0
	Total	5304	100.0	100.0	

**Number of days in the past month substance was used: Over-the-counter
medications to get high**

		Frequency	Percent	Valid Percent	Cumulative Percent
Valid	No answer	1274	24.0	24.0	24.0
	0 day	3989	75.2	75.2	99.2
	1-2 days	29	.5	.5	99.8
	3-5 days	6	.1	.1	99.9
	6-9 days	5	.1	.1	100.0
	10-19 days	1	.0	.0	100.0
	Total	5304	100.0	100.0	

Number of days in the past month substance was used: Methamphetamine

		Frequency	Percent	Valid Percent	Cumulative Percent
Valid	No answer	1288	24.3	24.3	24.3
	0 day	4012	75.6	75.6	99.9
	1-2 days	2	.0	.0	100.0
	6-9 days	1	.0	.0	100.0
	20-29 days	1	.0	.0	100.0
	Total	5304	100.0	100.0	

Number of days in the past month substance was used: Other illegal drugs

		Frequency	Percent	Valid Percent	Cumulative Percent
Valid	No answer	1297	24.5	24.5	24.5
	0 day	3980	75.0	75.0	99.5
	1-2 days	15	.3	.3	99.8
	3-5 days	4	.1	.1	99.8
	6-9 days	1	.0	.0	99.9
	10-19 days	2	.0	.0	99.9
	All 30 days	5	.1	.1	100.0
	Total	5304	100.0	100.0	

Age of first time use: Cigarettes

		Frequency	Percent	Valid Percent	Cumulative Percent
Valid	No answer	245	4.6	4.6	4.6
	Did not use	2873	54.2	54.2	58.8
	Under 10	52	1.0	1.0	59.8
	10-11	57	1.1	1.1	60.8
	12-13	196	3.7	3.7	64.5
	14-15	381	7.2	7.2	71.7
	16-17	604	11.4	11.4	83.1
	18-20	789	14.9	14.9	98.0
	21-25	92	1.7	1.7	99.7
	26+	15	.3	.3	100.0
	Total	5304	100.0	100.0	

Age of first time use: Cigars

		Frequency	Percent	Valid Percent	Cumulative Percent
Valid	No answer	323	6.1	6.1	6.1
	Did not use	3306	62.3	62.3	68.4
	Under 10	5	.1	.1	68.5
	10-11	7	.1	.1	68.6
	12-13	50	.9	.9	69.6
	14-15	177	3.3	3.3	72.9
	16-17	531	10.0	10.0	82.9
	18-20	800	15.1	15.1	98.0
	21-25	86	1.6	1.6	99.6
	26+	19	.4	.4	100.0
	Total	5304	100.0	100.0	

Age of first time use: Chewing or smokeless tobacco

		Frequency	Percent	Valid Percent	Cumulative Percent
Valid	No answer	385	7.3	7.3	7.3
	Did not use	4255	80.2	80.2	87.5
	Under 10	5	.1	.1	87.6
	10-11	6	.1	.1	87.7
	12-13	20	.4	.4	88.1
	14-15	96	1.8	1.8	89.9
	16-17	204	3.8	3.8	93.7
	18-20	291	5.5	5.5	99.2
	21-25	34	.6	.6	99.8
	26+	8	.2	.2	100.0
	Total	5304	100.0	100.0	

Age of first time use: Smoking tobacco with hookah or water pipe

		Frequency	Percent	Valid Percent	Cumulative Percent
Valid	No answer	349	6.6	6.6	6.6
	Did not use	3319	62.6	62.6	69.2
	10-11	4	.1	.1	69.2
	12-13	8	.2	.2	69.4
	14-15	106	2.0	2.0	71.4
	16-17	461	8.7	8.7	80.1
	18-20	962	18.1	18.1	98.2
	21-25	84	1.6	1.6	99.8
	26+	11	.2	.2	100.0
	Total	5304	100.0	100.0	

Age of first time use: Alcohol

		Frequency	Percent	Valid Percent	Cumulative Percent
Valid	No answer	66	1.2	1.2	1.2
	Did not use	818	15.4	15.4	16.7
	Under 10	70	1.3	1.3	18.0
	10-11	58	1.1	1.1	19.1
	12-13	257	4.8	4.8	23.9
	14-15	795	15.0	15.0	38.9
	16-17	1388	26.2	26.2	65.1
	18-20	1563	29.5	29.5	94.6
	21-25	282	5.3	5.3	99.9
	26+	7	.1	.1	100.0
	Total	5304	100.0	100.0	

Age of first time use: Marijuana

		Frequency	Percent	Valid Percent	Cumulative Percent
Valid	No answer	295	5.6	5.6	5.6
	Did not use	2916	55.0	55.0	60.5
	Under 10	5	.1	.1	60.6
	10-11	12	.2	.2	60.9
	12-13	95	1.8	1.8	62.7
	14-15	356	6.7	6.7	69.4
	16-17	657	12.4	12.4	81.7
	18-20	869	16.4	16.4	98.1
	21-25	93	1.8	1.8	99.9
	26+	6	.1	.1	100.0
	Total	5304	100.0	100.0	

Age of first time use: Cocaine

		Frequency	Percent	Valid Percent	Cumulative Percent
Valid	No answer	380	7.2	7.2	7.2
	Did not use	4649	87.7	87.7	94.8
	12-13	5	.1	.1	94.9
	14-15	11	.2	.2	95.1
	16-17	61	1.2	1.2	96.3
	18-20	148	2.8	2.8	99.1
	21-25	48	.9	.9	100.0
	26+	2	.0	.0	100.0
	Total	5304	100.0	100.0	

Age of first time use: Hallucinogens

		Frequency	Percent	Valid Percent	Cumulative Percent
Valid	No answer	368	6.9	6.9	6.9
	Did not use	4512	85.1	85.1	92.0
	12-13	9	.2	.2	92.2
	14-15	27	.5	.5	92.7
	16-17	96	1.8	1.8	94.5
	18-20	243	4.6	4.6	99.1
	21-25	46	.9	.9	99.9
	26+	3	.1	.1	100.0
	Total	5304	100.0	100.0	

Age of first time use: Heroin

		Frequency	Percent	Valid Percent	Cumulative Percent
Valid	No answer	398	7.5	7.5	7.5
	Did not use	4871	91.8	91.8	99.3
	12-13	1	.0	.0	99.4
	14-15	4	.1	.1	99.4
	16-17	9	.2	.2	99.6
	18-20	18	.3	.3	99.9
	21-25	3	.1	.1	100.0
	Total	5304	100.0	100.0	

Age of first time use: Inhalants

		Frequency	Percent	Valid Percent	Cumulative Percent
Valid	No answer	392	7.4	7.4	7.4
	Did not use	4799	90.5	90.5	97.9
	Under 10	4	.1	.1	97.9
	10-11	9	.2	.2	98.1
	12-13	25	.5	.5	98.6
	14-15	23	.4	.4	99.0
	16-17	19	.4	.4	99.4
	18-20	25	.5	.5	99.8
	21-25	8	.2	.2	100.0
	Total	5304	100.0	100.0	

Age of first time use: Prescription pills that are not prescribed to you

		Frequency	Percent	Valid Percent	Cumulative Percent
Valid	No answer	362	6.8	6.8	6.8
	Did not use	4253	80.2	80.2	87.0
	Under 10	2	.0	.0	87.0
	10-11	2	.0	.0	87.1
	12-13	34	.6	.6	87.7
	14-15	73	1.4	1.4	89.1
	16-17	193	3.6	3.6	92.7
	18-20	310	5.8	5.8	98.6
	21-25	60	1.1	1.1	99.7
	26+	15	.3	.3	100.0
	Total	5304	100.0	100.0	

Age of first time use: Medications prescribed to you but used to get high

		Frequency	Percent	Valid Percent	Cumulative Percent
Valid	No answer	386	7.3	7.3	7.3
	Did not use	4670	88.0	88.0	95.3
	Under 10	2	.0	.0	95.4
	10-11	1	.0	.0	95.4
	12-13	12	.2	.2	95.6
	14-15	34	.6	.6	96.2
	16-17	63	1.2	1.2	97.4
	18-20	104	2.0	2.0	99.4
	21-25	25	.5	.5	99.9
	26+	7	.1	.1	100.0
	Total	5304	100.0	100.0	

Age of first time use: Over-the-counter medications to get high

		Frequency	Percent	Valid Percent	Cumulative Percent
Valid	No answer	391	7.4	7.4	7.4
	Did not use	4743	89.4	89.4	96.8
	Under 10	1	.0	.0	96.8
	10-11	2	.0	.0	96.9
	12-13	13	.2	.2	97.1
	14-15	34	.6	.6	97.7
	16-17	57	1.1	1.1	98.8
	18-20	52	1.0	1.0	99.8
	21-25	10	.2	.2	100.0
	26+	1	.0	.0	100.0
	Total	5304	100.0	100.0	

Age of first time use: Methamphetamine

		Frequency	Percent	Valid Percent	Cumulative Percent
Valid	No answer	391	7.4	7.4	7.4
	Did not use	4870	91.8	91.8	99.2
	Under 10	1	.0	.0	99.2
	12-13	3	.1	.1	99.3
	14-15	4	.1	.1	99.3
	16-17	6	.1	.1	99.5
	18-20	16	.3	.3	99.8
	21-25	11	.2	.2	100.0
	26+	2	.0	.0	100.0
	Total	5304	100.0	100.0	

Age of first time use: Other illegal drugs

		Frequency	Percent	Valid Percent	Cumulative Percent
Valid	No answer	414	7.8	7.8	7.8
	Did not use	4796	90.4	90.4	98.2
	Under 10	3	.1	.1	98.3
	10-11	2	.0	.0	98.3
	12-13	3	.1	.1	98.4
	14-15	8	.2	.2	98.5
	16-17	19	.4	.4	98.9
	18-20	45	.8	.8	99.7
	21-25	11	.2	.2	99.9
	26+	3	.1	.1	100.0
	Total	5304	100.0	100.0	

Use of substance in the past 6 months without a prescription: Adderall

		Frequency	Percent	Valid Percent	Cumulative Percent
Valid	No answer	69	1.3	1.3	1.3
	Did not use	4708	88.8	88.8	90.1
	Once per year	228	4.3	4.3	94.4
	6 times a year	81	1.5	1.5	95.9
	Once a month	144	2.7	2.7	98.6
	Once a week	49	.9	.9	99.5
	3 times a week	16	.3	.3	99.8
	5 times a week	6	.1	.1	99.9
	Every day	3	.1	.1	100.0
	Total	5304	100.0	100.0	

Use of substance in the past 6 months without a prescription: Ritalin

		Frequency	Percent	Valid Percent	Cumulative Percent
Valid	No answer	94	1.8	1.8	1.8
	Did not use	5131	96.7	96.7	98.5
	Once per year	35	.7	.7	99.2
	6 times a year	12	.2	.2	99.4
	Once a month	21	.4	.4	99.8
	Once a week	6	.1	.1	99.9
	3 times a week	2	.0	.0	99.9
	5 times a week	2	.0	.0	100.0
	Every day	1	.0	.0	100.0
	Total	5304	100.0	100.0	

Use of substance in the past 6 months without a prescription: Xanax

		Frequency	Percent	Valid Percent	Cumulative Percent
Valid	No answer	99	1.9	1.9	1.9
	Did not use	5047	95.2	95.2	97.0
	Once per year	76	1.4	1.4	98.5
	6 times a year	30	.6	.6	99.0
	Once a month	34	.6	.6	99.7
	Once a week	12	.2	.2	99.9
	3 times a week	5	.1	.1	100.0
	5 times a week	1	.0	.0	100.0
	Total	5304	100.0	100.0	

Use of substance in the past 6 months without a prescription: Codeine

		Frequency	Percent	Valid Percent	Cumulative Percent
Valid	No answer	92	1.7	1.7	1.7
	Did not use	5055	95.3	95.3	97.0
	Once per year	100	1.9	1.9	98.9
	6 times a year	24	.5	.5	99.4
	Once a month	23	.4	.4	99.8
	Once a week	9	.2	.2	100.0
	3 times a week	1	.0	.0	100.0
	Total	5304	100.0	100.0	

Use of substance in the past 6 months without a prescription: Vicodin

		Frequency	Percent	Valid Percent	Cumulative Percent
Valid	No answer	97	1.8	1.8	1.8
	Did not use	4978	93.9	93.9	95.7
	Once per year	122	2.3	2.3	98.0
	6 times a year	50	.9	.9	98.9
	Once a month	35	.7	.7	99.6
	Once a week	13	.2	.2	99.8
	3 times a week	5	.1	.1	99.9
	5 times a week	4	.1	.1	100.0
	Total	5304	100.0	100.0	

Use of substance in the past 6 months without a prescription: Lortab

		Frequency	Percent	Valid Percent	Cumulative Percent
Valid	No answer	107	2.0	2.0	2.0
	Did not use	5140	96.9	96.9	98.9
	Once per year	26	.5	.5	99.4
	6 times a year	13	.2	.2	99.7
	Once a month	12	.2	.2	99.9
	Once a week	4	.1	.1	100.0
	3 times a week	2	.0	.0	100.0
	Total	5304	100.0	100.0	

Use of substance in the past 6 months without a prescription: Percocet

		Frequency	Percent	Valid Percent	Cumulative Percent
Valid	No answer	108	2.0	2.0	2.0
	Did not use	5139	96.9	96.9	98.9
	Once per year	31	.6	.6	99.5
	6 times a year	9	.2	.2	99.7
	Once a month	12	.2	.2	99.9
	Once a week	2	.0	.0	99.9
	3 times a week	2	.0	.0	100.0
	Every day	1	.0	.0	100.0
	Total	5304	100.0	100.0	

Use of substance in the past 6 months without a prescription: Oxycontin

		Frequency	Percent	Valid Percent	Cumulative Percent
Valid	No answer	104	2.0	2.0	2.0
	Did not use	5147	97.0	97.0	99.0
	Once per year	28	.5	.5	99.5
	6 times a year	10	.2	.2	99.7
	Once a month	10	.2	.2	99.9
	Once a week	5	.1	.1	100.0
	Total	5304	100.0	100.0	

Use of substance in the past 6 months without a prescription: Morphine

		Frequency	Percent	Valid Percent	Cumulative Percent
Valid	No answer	105	2.0	2.0	2.0
	Did not use	5167	97.4	97.4	99.4
	Once per year	21	.4	.4	99.8
	6 times a year	5	.1	.1	99.9
	Once a month	3	.1	.1	99.9
	Once a week	1	.0	.0	100.0
	3 times a week	1	.0	.0	100.0
	5 times a week	1	.0	.0	100.0
	Total	5304	100.0	100.0	

Use of substance in the past 6 months without a prescription: Methadone

		Frequency	Percent	Valid Percent	Cumulative Percent
Valid	No answer	117	2.2	2.2	2.2
	Did not use	5173	97.5	97.5	99.7
	Once per year	7	.1	.1	99.9
	6 times a year	2	.0	.0	99.9
	Once a month	2	.0	.0	99.9
	Once a week	3	.1	.1	100.0
	Total	5304	100.0	100.0	

Use of substance in the past 6 months without a prescription: Steroids

		Frequency	Percent	Valid Percent	Cumulative Percent
Valid	No answer	134	2.5	2.5	2.5
	Did not use	5157	97.2	97.2	99.8
	Once per year	7	.1	.1	99.9
	Once a month	2	.0	.0	99.9
	Once a week	3	.1	.1	100.0
	5 times a week	1	.0	.0	100.0
	Total	5304	100.0	100.0	

Alcohol use in the past 6 months

		Frequency	Percent	Valid Percent	Cumulative Percent
Valid	Yes	4239	79.9	79.9	79.9
	No	1065	20.1	20.1	100.0
	Total	5304	100.0	100.0	

Reasons for drinking: To experiment

		Frequency	Percent	Valid Percent	Cumulative Percent
Valid	No answer	37	.9	.9	.9
	Yes	792	18.7	18.7	19.6
	No	3364	79.4	79.4	98.9
	Unsure	46	1.1	1.1	100.0
	Total	4239	100.0	100.0	

Reasons for drinking: Because I am hooked

		Frequency	Percent	Valid Percent	Cumulative Percent
Valid	No answer	54	1.3	1.3	1.3
	Yes	103	2.4	2.4	3.7
	No	4032	95.1	95.1	98.8
	Unsure	50	1.2	1.2	100.0
	Total	4239	100.0	100.0	

Reasons for drinking: To relax or relieve tension

		Frequency	Percent	Valid Percent	Cumulative Percent
Valid	No answer	24	.6	.6	.6
	Yes	2643	62.3	62.3	62.9
	No	1531	36.1	36.1	99.0
	Unsure	41	1.0	1.0	100.0
	Total	4239	100.0	100.0	

Reasons for drinking: To feel good or get high

		Frequency	Percent	Valid Percent	Cumulative Percent
Valid	No answer	33	.8	.8	.8
	Yes	1967	46.4	46.4	47.2
	No	2195	51.8	51.8	99.0
	Unsure	44	1.0	1.0	100.0
	Total	4239	100.0	100.0	

Reasons for drinking: To seek deeper insights and understanding

		Frequency	Percent	Valid Percent	Cumulative Percent
Valid	No answer	50	1.2	1.2	1.2
	Yes	248	5.9	5.9	7.0
	No	3898	92.0	92.0	99.0
	Unsure	43	1.0	1.0	100.0
	Total	4239	100.0	100.0	

Reasons for drinking: To have a good time with friends

		Frequency	Percent	Valid Percent	Cumulative Percent
Valid	No answer	12	.3	.3	.3
	Yes	3628	85.6	85.6	85.9
	No	580	13.7	13.7	99.6
	Unsure	19	.4	.4	100.0
	Total	4239	100.0	100.0	

Reasons for drinking: To fit in with a group I like

		Frequency	Percent	Valid Percent	Cumulative Percent
Valid	No answer	46	1.1	1.1	1.1
	Yes	521	12.3	12.3	13.4
	No	3629	85.6	85.6	99.0
	Unsure	43	1.0	1.0	100.0
	Total	4239	100.0	100.0	

Reasons for drinking: Because of boredom

		Frequency	Percent	Valid Percent	Cumulative Percent
Valid	No answer	34	.8	.8	.8
	Yes	861	20.3	20.3	21.1
	No	3304	77.9	77.9	99.1
	Unsure	40	.9	.9	100.0
	Total	4239	100.0	100.0	

Reasons for drinking: Because of anger or frustration

		Frequency	Percent	Valid Percent	Cumulative Percent
Valid	No answer	40	.9	.9	.9
	Yes	707	16.7	16.7	17.6
	No	3464	81.7	81.7	99.3
	Unsure	28	.7	.7	100.0
	Total	4239	100.0	100.0	

Reasons for drinking: To get through the day

		Frequency	Percent	Valid Percent	Cumulative Percent
Valid	No answer	47	1.1	1.1	1.1
	Yes	134	3.2	3.2	4.3
	No	4038	95.3	95.3	99.5
	Unsure	20	.5	.5	100.0
	Total	4239	100.0	100.0	

Reasons for drinking: To increase the effects of other drug(s)

		Frequency	Percent	Valid Percent	Cumulative Percent
Valid	No answer	40	.9	.9	.9
	Yes	155	3.7	3.7	4.6
	No	4033	95.1	95.1	99.7
	Unsure	11	.3	.3	100.0
	Total	4239	100.0	100.0	

Reasons for drinking: To decrease the effects of other drug(s)

		Frequency	Percent	Valid Percent	Cumulative Percent
Valid	No answer	49	1.2	1.2	1.2
	Yes	58	1.4	1.4	2.5
	No	4126	97.3	97.3	99.9
	Unsure	6	.1	.1	100.0
	Total	4239	100.0	100.0	

Reasons for drinking: To get to sleep

		Frequency	Percent	Valid Percent	Cumulative Percent
Valid	No answer	53	1.3	1.3	1.3
	Yes	409	9.6	9.6	10.9
	No	3755	88.6	88.6	99.5
	Unsure	22	.5	.5	100.0
	Total	4239	100.0	100.0	

Reasons for drinking: Because it tastes good

		Frequency	Percent	Valid Percent	Cumulative Percent
Valid	No answer	35	.8	.8	.8
	Yes	2487	58.7	58.7	59.5
	No	1669	39.4	39.4	98.9
	Unsure	48	1.1	1.1	100.0
	Total	4239	100.0	100.0	

Reasons for drinking: To get away from my problems

		Frequency	Percent	Valid Percent	Cumulative Percent
Valid	No answer	61	1.4	1.4	1.4
	Yes	574	13.5	13.5	15.0
	No	3529	83.3	83.3	98.2
	Unsure	75	1.8	1.8	100.0
	Total	4239	100.0	100.0	

Combined alcohol with energy drinks

		Frequency	Percent	Valid Percent	Cumulative Percent
Valid	No answer	8	.2	.2	.2
	Yes	1496	35.3	35.3	35.5
	No	2735	64.5	64.5	100.0
	Total	4239	100.0	100.0	

Combined alcohol with stimulants

		Frequency	Percent	Valid Percent	Cumulative Percent
Valid	No answer	8	.2	.2	.2
	Yes	264	6.2	6.2	6.4
	No	3967	93.6	93.6	100.0
	Total	4239	100.0	100.0	

Consequences of alcohol use: Friends or family members worried or complained about your drinking

		Frequency	Percent	Valid Percent	Cumulative Percent
Valid	No answer	19	.4	.4	.4
	Never	3690	87.0	87.0	87.5
	Once	296	7.0	7.0	94.5
	Twice	95	2.2	2.2	96.7
	3-5 times	102	2.4	2.4	99.1
	6-9 times	13	.3	.3	99.4
	10+ times	24	.6	.6	100.0
	Total	4239	100.0	100.0	

Consequences of alcohol use: Had a hangover

		Frequency	Percent	Valid Percent	Cumulative Percent
Valid	No answer	26	.6	.6	.6
	Never	1532	36.1	36.1	36.8
	Once	819	19.3	19.3	56.1
	Twice	612	14.4	14.4	70.5
	3-5 times	616	14.5	14.5	85.0
	6-9 times	302	7.1	7.1	92.2
	10+ times	332	7.8	7.8	100.0
	Total	4239	100.0	100.0	

Consequences of alcohol use: Felt bad about your drinking

		Frequency	Percent	Valid Percent	Cumulative Percent
Valid	No answer	35	.8	.8	.8
	Never	2985	70.4	70.4	71.2
	Once	561	13.2	13.2	84.5
	Twice	314	7.4	7.4	91.9
	3-5 times	235	5.5	5.5	97.4
	6-9 times	54	1.3	1.3	98.7
	10+ times	55	1.3	1.3	100.0
	Total	4239	100.0	100.0	

Consequences of alcohol use: Been unable to stop drinking when you wanted to

		Frequency	Percent	Valid Percent	Cumulative Percent
Valid	No answer	30	.7	.7	.7
	Never	3833	90.4	90.4	91.1
	Once	119	2.8	2.8	93.9
	Twice	61	1.4	1.4	95.4
	3-5 times	67	1.6	1.6	97.0
	6-9 times	41	1.0	1.0	97.9
	10+ times	88	2.1	2.1	100.0
	Total	4239	100.0	100.0	

Consequences of alcohol use: Created problems between you and your friends or family members

		Frequency	Percent	Valid Percent	Cumulative Percent
Valid	No answer	25	.6	.6	.6
	Never	3655	86.2	86.2	86.8
	Once	270	6.4	6.4	93.2
	Twice	156	3.7	3.7	96.9
	3-5 times	99	2.3	2.3	99.2
	6-9 times	16	.4	.4	99.6
	10+ times	18	.4	.4	100.0
	Total	4239	100.0	100.0	

Consequences of alcohol use: Gotten into trouble at work or school because of drinking

		Frequency	Percent	Valid Percent	Cumulative Percent
Valid	No answer	31	.7	.7	.7
	Never	4022	94.9	94.9	95.6
	Once	119	2.8	2.8	98.4
	Twice	39	.9	.9	99.3
	3-5 times	18	.4	.4	99.8
	6-9 times	6	.1	.1	99.9
	10+ times	4	.1	.1	100.0
	Total	4239	100.0	100.0	

Consequences of alcohol use: Gone to anyone for help to reduce your drinking

		Frequency	Percent	Valid Percent	Cumulative Percent
Valid	No answer	24	.6	.6	.6
	Never	4145	97.8	97.8	98.3
	Once	34	.8	.8	99.2
	Twice	17	.4	.4	99.6
	3-5 times	12	.3	.3	99.8
	6-9 times	2	.0	.0	99.9
	10+ times	5	.1	.1	100.0
	Total	4239	100.0	100.0	

Consequences of alcohol use: Been hurt or injured because of drinking

		Frequency	Percent	Valid Percent	Cumulative Percent
Valid	No answer	23	.5	.5	.5
	Never	3721	87.8	87.8	88.3
	Once	268	6.3	6.3	94.6
	Twice	126	3.0	3.0	97.6
	3-5 times	76	1.8	1.8	99.4
	6-9 times	18	.4	.4	99.8
	10+ times	7	.2	.2	100.0
	Total	4239	100.0	100.0	

Consequences of alcohol use: Been ticketed or arrested because of drinking

		Frequency	Percent	Valid Percent	Cumulative Percent
Valid	No answer	24	.6	.6	.6
	Never	4088	96.4	96.4	97.0
	Once	106	2.5	2.5	99.5
	Twice	13	.3	.3	99.8
	3-5 times	5	.1	.1	99.9
	6-9 times	2	.0	.0	100.0
	10+ times	1	.0	.0	100.0
	Total	4239	100.0	100.0	

Consequences of alcohol use: Been arrested for drunk driving

		Frequency	Percent	Valid Percent	Cumulative Percent
Valid	No answer	27	.6	.6	.6
	Never	4180	98.6	98.6	99.2
	Once	22	.5	.5	99.8
	Twice	5	.1	.1	99.9
	3-5 times	4	.1	.1	100.0
	10+ times	1	.0	.0	100.0
	Total	4239	100.0	100.0	

Consequences of alcohol use: Driven a car while under the influence

		Frequency	Percent	Valid Percent	Cumulative Percent
Valid	No answer	27	.6	.6	.6
	Never	3609	85.1	85.1	85.8
	Once	275	6.5	6.5	92.3
	Twice	141	3.3	3.3	95.6
	3-5 times	120	2.8	2.8	98.4
	6-9 times	29	.7	.7	99.1
	10+ times	38	.9	.9	100.0
	Total	4239	100.0	100.0	

Consequences of alcohol use: Gotten into physical fights when drinking

		Frequency	Percent	Valid Percent	Cumulative Percent
Valid	No answer	46	1.1	1.1	1.1
	Never	3989	94.1	94.1	95.2
	Once	132	3.1	3.1	98.3
	Twice	49	1.2	1.2	99.5
	3-5 times	18	.4	.4	99.9
	6-9 times	2	.0	.0	99.9
	10+ times	3	.1	.1	100.0
	Total	4239	100.0	100.0	

Consequences of alcohol use: Experienced unwanted sexual attention

		Frequency	Percent	Valid Percent	Cumulative Percent
Valid	No answer	34	.8	.8	.8
	Never	3781	89.2	89.2	90.0
	Once	225	5.3	5.3	95.3
	Twice	124	2.9	2.9	98.2
	3-5 times	59	1.4	1.4	99.6
	6-9 times	8	.2	.2	99.8
	10+ times	8	.2	.2	100.0
	Total	4239	100.0	100.0	

Consequences of alcohol use: Engaged in risky sexual behavior

		Frequency	Percent	Valid Percent	Cumulative Percent
Valid	No answer	23	.5	.5	.5
	Never	3675	86.7	86.7	87.2
	Once	247	5.8	5.8	93.1
	Twice	147	3.5	3.5	96.5
	3-5 times	97	2.3	2.3	98.8
	6-9 times	25	.6	.6	99.4
	10+ times	25	.6	.6	100.0
	Total	4239	100.0	100.0	

Consequences of alcohol use: Missed class or assignments

		Frequency	Percent	Valid Percent	Cumulative Percent
Valid	No answer	27	.6	.6	.6
	Never	3458	81.6	81.6	82.2
	Once	329	7.8	7.8	90.0
	Twice	212	5.0	5.0	95.0
	3-5 times	160	3.8	3.8	98.7
	6-9 times	34	.8	.8	99.6
	10+ times	19	.4	.4	100.0
	Total	4239	100.0	100.0	

Consequences of alcohol use: Blacked out

		Frequency	Percent	Valid Percent	Cumulative Percent
Valid	No answer	30	.7	.7	.7
	Never	2963	69.9	69.9	70.6
	Once	507	12.0	12.0	82.6
	Twice	321	7.6	7.6	90.1
	3-5 times	237	5.6	5.6	95.7
	6-9 times	90	2.1	2.1	97.9
	10+ times	91	2.1	2.1	100.0
	Total	4239	100.0	100.0	

Consequences of alcohol use: Seriously thought about suicide

		Frequency	Percent	Valid Percent	Cumulative Percent
Valid	No answer	23	.5	.5	.5
	Never	4125	97.3	97.3	97.9
	Once	55	1.3	1.3	99.2
	Twice	18	.4	.4	99.6
	3-5 times	13	.3	.3	99.9
	6-9 times	2	.0	.0	99.9
	10+ times	3	.1	.1	100.0
	Total	4239	100.0	100.0	

Consequences of alcohol use: Seriously tried to commit suicide

		Frequency	Percent	Valid Percent	Cumulative Percent
Valid	No answer	43	1.0	1.0	1.0
	Never	4176	98.5	98.5	99.5
	Once	12	.3	.3	99.8
	Twice	4	.1	.1	99.9
	3-5 times	2	.0	.0	100.0
	6-9 times	1	.0	.0	100.0
	10+ times	1	.0	.0	100.0
	Total	4239	100.0	100.0	

Usual type of alcohol

		Frequency	Percent	Valid Percent	Cumulative Percent
Valid	No answer	17	.4	.4	.4
	I did not drink alcohol	385	9.1	9.1	9.5
	Beer	1195	28.2	28.2	37.7
	Malt beverages	252	5.9	5.9	43.6
	Wine	503	11.9	11.9	55.5
	Liquor	1796	42.4	42.4	97.9
	High alcohol drinks	39	.9	.9	98.8
	Some other type	52	1.2	1.2	100.0
	Total	4239	100.0	100.0	

Frequency of binge drinking during the past month

		Frequency	Percent	Valid Percent	Cumulative Percent
Valid	0	2634	49.7	49.7	49.7
	1	558	10.5	10.5	60.2
	2	491	9.3	9.3	69.4
	3	312	5.9	5.9	75.3
	4	222	4.2	4.2	79.5
	5	277	5.2	5.2	84.7
	6	169	3.2	3.2	87.9
	7	79	1.5	1.5	89.4
	8	138	2.6	2.6	92.0
	9	58	1.1	1.1	93.1
	10	160	3.0	3.0	96.1
	11	10	.2	.2	96.3
	12	74	1.4	1.4	97.7
	13	9	.2	.2	97.9
	14	10	.2	.2	98.1
	15	46	.9	.9	98.9
	16	5	.1	.1	99.0
	17	1	.0	.0	99.0
	18	3	.1	.1	99.1
	19	3	.1	.1	99.2
	20	25	.5	.5	99.6
	23	1	.0	.0	99.6
	24	1	.0	.0	99.7
	25	10	.2	.2	99.8
	27	1	.0	.0	99.9
	30	5	.1	.1	100.0
	39	1	.0	.0	100.0
	63	1	.0	.0	100.0
	Total	5304	100.0	100.0	

Frequency of binge drinking during the last two weeks

		Frequency	Percent	Valid Percent	Cumulative Percent
Valid	0	3171	59.8	59.8	59.8
	1	797	15.0	15.0	74.8
	2	477	9.0	9.0	83.8
	3	287	5.4	5.4	89.2
	4	216	4.1	4.1	93.3
	5	130	2.5	2.5	95.7
	6	61	1.2	1.2	96.9
	7	37	.7	.7	97.6
	8	28	.5	.5	98.1
	9	6	.1	.1	98.2
	10	35	.7	.7	98.9
	11	1	.0	.0	98.9
	12	11	.2	.2	99.1
	13	3	.1	.1	99.2
	14	5	.1	.1	99.3
	15	7	.1	.1	99.4
	16	1	.0	.0	99.4
	18	2	.0	.0	99.5
	20	13	.2	.2	99.7
	24	2	.0	.0	99.7
	25	4	.1	.1	99.8
	30	3	.1	.1	99.9
	35	1	.0	.0	99.9
	40	3	.1	.1	99.9
	85	1	.0	.0	100.0
	99	2	.0	.0	100.0
	Total	5304	100.0	100.0	

Age

		Frequency	Percent	Valid Percent	Cumulative Percent
Valid	21 or older	2842	53.6	53.6	53.6
	Under 21	2462	46.4	46.4	100.0
	Total	5304	100.0	100.0	

Students under 21: 1st easiest way to get alcohol

		Frequency	Percent	Valid Percent	Cumulative Percent
Valid	No answer	39	2.2	2.2	2.2
	Older friends	938	53.0	53.0	55.2
	Older siblings	61	3.4	3.4	58.6
	On-campus parties	88	5.0	5.0	63.6
	Fraternity or sorority houses	212	12.0	12.0	75.6
	Off-campus private parties	212	12.0	12.0	87.5
	Someone else on campus	96	5.4	5.4	92.9
	Buying it yourself	39	2.2	2.2	95.1
	Stealing it from store	2	.1	.1	95.3
	From parents without their knowledge	10	.6	.6	95.8
	From parents with their knowledge	74	4.2	4.2	100.0
	Total	1771	100.0	100.0	

Students under 21: 2nd easiest way to get alcohol

		Frequency	Percent	Valid Percent	Cumulative Percent
Valid	No answer	102	5.8	5.8	5.8
	Older friends	355	20.0	20.0	25.8
	Older siblings	165	9.3	9.3	35.1
	On-campus parties	222	12.5	12.5	47.7
	Fraternity or sorority houses	219	12.4	12.4	60.0
	Off-campus private parties	434	24.5	24.5	84.5
	Someone else on campus	165	9.3	9.3	93.8
	Buying it yourself	24	1.4	1.4	95.2
	Stealing it from store	3	.2	.2	95.4
	From parents without their knowledge	26	1.5	1.5	96.8
	From parents with their knowledge	56	3.2	3.2	100.0
	Total	1771	100.0	100.0	

Students under 21: 3rd easiest way to get alcohol

		Frequency	Percent	Valid Percent	Cumulative Percent
Valid	No answer	147	8.3	8.3	8.3
	Older friends	188	10.6	10.6	18.9
	Older siblings	145	8.2	8.2	27.1
	On-campus parties	251	14.2	14.2	41.3
	Fraternity or sorority houses	254	14.3	14.3	55.6
	Off-campus private parties	312	17.6	17.6	73.2
	Someone else on campus	258	14.6	14.6	87.8
	Buying it yourself	38	2.1	2.1	89.9
	Stealing it from store	4	.2	.2	90.2
	From parents without their knowledge	43	2.4	2.4	92.6
	From parents with their knowledge	131	7.4	7.4	100.0
	Total	1771	100.0	100.0	

Students under 21: Bought alcohol

		Frequency	Percent	Valid Percent	Cumulative Percent
Valid	No answer	5	.2	.2	.2
	Yes	164	6.7	6.7	6.9
	No	2293	93.1	93.1	100.0
	Total	2462	100.0	100.0	

Students under 21: Most common method to purchase alcohol

		Frequency	Percent	Valid Percent	Cumulative Percent
Valid	No answer	8	4.9	4.9	4.9
	Used a fake ID	49	29.9	29.9	34.8
	Used someone else's ID	50	30.5	30.5	65.2
	Bought alcohol without using an ID	57	34.8	34.8	100.0
	Total	164	100.0	100.0	

Students under 21: Easiest place to purchase alcohol

		Frequency	Percent	Valid Percent	Cumulative Percent
Valid	No answer	6	3.7	3.7	3.7
	Bar	59	36.0	36.0	39.6
	Restaurant	24	14.6	14.6	54.3
	Grocery store	21	12.8	12.8	67.1
	Discount store	5	3.0	3.0	70.1
	Convenience store	14	8.5	8.5	78.7
	Drug store	7	4.3	4.3	82.9
	Liquor store	27	16.5	16.5	99.4
	Winery or microbrewery	1	.6	.6	100.0
	Total	164	100.0	100.0	

Any drug use in the past 6 months

		Frequency	Percent	Valid Percent	Cumulative Percent
Valid	Yes	1753	33.1	33.1	33.1
	No	3551	66.9	66.9	100.0
	Total	5304	100.0	100.0	

Consequences of drug use: Abused more than one drug at a time

		Frequency	Percent	Valid Percent	Cumulative Percent
Valid	No answer	11	.6	.6	.6
	Never	1269	72.4	72.4	73.0
	Once	116	6.6	6.6	79.6
	Twice	98	5.6	5.6	85.2
	3-5 times	143	8.2	8.2	93.4
	6-9 times	47	2.7	2.7	96.1
	10+ times	69	3.9	3.9	100.0
	Total	1753	100.0	100.0	

Consequences of drug use: Been unable to stop using drugs when you wanted to

		Frequency	Percent	Valid Percent	Cumulative Percent
Valid	No answer	14	.8	.8	.8
	Never	1590	90.7	90.7	91.5
	Once	29	1.7	1.7	93.2
	Twice	23	1.3	1.3	94.5
	3-5 times	29	1.7	1.7	96.1
	6-9 times	8	.5	.5	96.6
	10+ times	60	3.4	3.4	100.0
	Total	1753	100.0	100.0	

Consequences of drug use: Had blackouts or flashbacks as a result of drug use

		Frequency	Percent	Valid Percent	Cumulative Percent
Valid	No answer	17	1.0	1.0	1.0
	Never	1556	88.8	88.8	89.7
	Once	67	3.8	3.8	93.6
	Twice	50	2.9	2.9	96.4
	3-5 times	41	2.3	2.3	98.7
	6-9 times	11	.6	.6	99.4
	10+ times	11	.6	.6	100.0
	Total	1753	100.0	100.0	

Consequences of drug use: Felt bad or guilty about your drug use

		Frequency	Percent	Valid Percent	Cumulative Percent
Valid	No answer	15	.9	.9	.9
	Never	1308	74.6	74.6	75.5
	Once	183	10.4	10.4	85.9
	Twice	103	5.9	5.9	91.8
	3-5 times	78	4.4	4.4	96.2
	6-9 times	22	1.3	1.3	97.5
	10+ times	44	2.5	2.5	100.0
	Total	1753	100.0	100.0	

Consequences of drug use: Had your friends or family complain about your involvement with drugs

		Frequency	Percent	Valid Percent	Cumulative Percent
Valid	No answer	14	.8	.8	.8
	Never	1551	88.5	88.5	89.3
	Once	79	4.5	4.5	93.8
	Twice	46	2.6	2.6	96.4
	3-5 times	40	2.3	2.3	98.7
	6-9 times	5	.3	.3	99.0
	10+ times	18	1.0	1.0	100.0
	Total	1753	100.0	100.0	

Consequences of drug use: Created problems between you and your friends or family members

		Frequency	Percent	Valid Percent	Cumulative Percent
Valid	No answer	10	.6	.6	.6
	Never	1607	91.7	91.7	92.2
	Once	74	4.2	4.2	96.5
	Twice	23	1.3	1.3	97.8
	3-5 times	25	1.4	1.4	99.2
	6-9 times	4	.2	.2	99.4
	10+ times	10	.6	.6	100.0
	Total	1753	100.0	100.0	

Consequences of drug use: Engaged in illegal activities in order to obtain drugs

		Frequency	Percent	Valid Percent	Cumulative Percent
Valid	No answer	13	.7	.7	.7
	Never	1622	92.5	92.5	93.3
	Once	22	1.3	1.3	94.5
	Twice	36	2.1	2.1	96.6
	3-5 times	23	1.3	1.3	97.9
	6-9 times	8	.5	.5	98.3
	10+ times	29	1.7	1.7	100.0
	Total	1753	100.0	100.0	

Consequences of drug use: Gotten into physical fights because you were using drugs

		Frequency	Percent	Valid Percent	Cumulative Percent
Valid	No answer	15	.9	.9	.9
	Never	1715	97.8	97.8	98.7
	Once	7	.4	.4	99.1
	Twice	8	.5	.5	99.5
	3-5 times	5	.3	.3	99.8
	6-9 times	1	.1	.1	99.9
	10+ times	2	.1	.1	100.0
	Total	1753	100.0	100.0	

Consequences of drug use: Experienced withdrawal symptoms when you stopped taking drugs

		Frequency	Percent	Valid Percent	Cumulative Percent
Valid	No answer	14	.8	.8	.8
	Never	1618	92.3	92.3	93.1
	Once	38	2.2	2.2	95.3
	Twice	35	2.0	2.0	97.3
	3-5 times	28	1.6	1.6	98.9
	6-9 times	6	.3	.3	99.2
	10+ times	14	.8	.8	100.0
	Total	1753	100.0	100.0	

Consequences of drug use: Had medical problems as a result of your drug use

		Frequency	Percent	Valid Percent	Cumulative Percent
Valid	No answer	13	.7	.7	.7
	Never	1676	95.6	95.6	96.3
	Once	24	1.4	1.4	97.7
	Twice	20	1.1	1.1	98.9
	3-5 times	13	.7	.7	99.6
	6-9 times	3	.2	.2	99.8
	10+ times	4	.2	.2	100.0
	Total	1753	100.0	100.0	

Consequences of drug use: Driven a car while under the influence of drugs

		Frequency	Percent	Valid Percent	Cumulative Percent
Valid	No answer	13	.7	.7	.7
	Never	1336	76.2	76.2	77.0
	Once	101	5.8	5.8	82.7
	Twice	85	4.8	4.8	87.6
	3-5 times	86	4.9	4.9	92.5
	6-9 times	32	1.8	1.8	94.3
	10+ times	100	5.7	5.7	100.0
	Total	1753	100.0	100.0	

Consequences of drug use: Gotten in trouble at work or school because of drug use

		Frequency	Percent	Valid Percent	Cumulative Percent
Valid	No answer	14	.8	.8	.8
	Never	1689	96.3	96.3	97.1
	Once	32	1.8	1.8	99.0
	Twice	7	.4	.4	99.4
	3-5 times	8	.5	.5	99.8
	10+ times	3	.2	.2	100.0
	Total	1753	100.0	100.0	

Consequences of drug use: Been in very vulnerable situations

		Frequency	Percent	Valid Percent	Cumulative Percent
Valid	No answer	11	.6	.6	.6
	Never	1676	95.6	95.6	96.2
	Once	32	1.8	1.8	98.1
	Twice	13	.7	.7	98.8
	3-5 times	16	.9	.9	99.7
	6-9 times	1	.1	.1	99.8
	10+ times	4	.2	.2	100.0
	Total	1753	100.0	100.0	

Consequences of drug use: Engaged in risky sexual behavior

		Frequency	Percent	Valid Percent	Cumulative Percent
Valid	No answer	15	.9	.9	.9
	Never	1625	92.7	92.7	93.6
	Once	41	2.3	2.3	95.9
	Twice	36	2.1	2.1	97.9
	3-5 times	19	1.1	1.1	99.0
	6-9 times	9	.5	.5	99.5
	10+ times	8	.5	.5	100.0
	Total	1753	100.0	100.0	

Consequences of drug use: Failed a class because of drug use

		Frequency	Percent	Valid Percent	Cumulative Percent
Valid	No answer	11	.6	.6	.6
	Never	1714	97.8	97.8	98.4
	Once	11	.6	.6	99.0
	Twice	11	.6	.6	99.7
	3-5 times	2	.1	.1	99.8
	6-9 times	1	.1	.1	99.8
	10+ times	3	.2	.2	100.0
	Total	1753	100.0	100.0	

Consequences of drug use: Missed class or assignments due to drug use

		Frequency	Percent	Valid Percent	Cumulative Percent
Valid	No answer	16	.9	.9	.9
	Never	1538	87.7	87.7	88.6
	Once	70	4.0	4.0	92.6
	Twice	55	3.1	3.1	95.8
	3-5 times	43	2.5	2.5	98.2
	6-9 times	15	.9	.9	99.1
	10+ times	16	.9	.9	100.0
	Total	1753	100.0	100.0	

Perception of peer approval/disapproval: Trying marijuana once or twice

		Frequency	Percent	Valid Percent	Cumulative Percent
Valid	No answer	37	.7	.7	.7
	Strongly approve	1032	19.5	19.5	20.2
	Somewhat approve	2009	37.9	37.9	58.0
	Neither approve or disapprove	1454	27.4	27.4	85.4
	Somewhat disapprove	390	7.4	7.4	92.8
	Strongly disapprove	382	7.2	7.2	100.0
	Total	5304	100.0	100.0	

Perception of peer approval/disapproval: Smoking marijuana occasionally

		Frequency	Percent	Valid Percent	Cumulative Percent
Valid	No answer	51	1.0	1.0	1.0
	Strongly approve	577	10.9	10.9	11.8
	Somewhat approve	1848	34.8	34.8	46.7
	Neither approve or disapprove	1625	30.6	30.6	77.3
	Somewhat disapprove	688	13.0	13.0	90.3
	Strongly disapprove	515	9.7	9.7	100.0
	Total	5304	100.0	100.0	

Perception of peer approval/disapproval: Smoking marijuana regularly

		Frequency	Percent	Valid Percent	Cumulative Percent
Valid	No answer	45	.8	.8	.8
	Strongly approve	264	5.0	5.0	5.8
	Somewhat approve	991	18.7	18.7	24.5
	Neither approve or disapprove	1526	28.8	28.8	53.3
	Somewhat disapprove	1494	28.2	28.2	81.4
	Strongly disapprove	984	18.6	18.6	100.0
	Total	5304	100.0	100.0	

Perception of peer approval/disapproval: Trying cocaine once or twice

		Frequency	Percent	Valid Percent	Cumulative Percent
Valid	No answer	45	.8	.8	.8
	Strongly approve	62	1.2	1.2	2.0
	Somewhat approve	369	7.0	7.0	9.0
	Neither approve or disapprove	873	16.5	16.5	25.4
	Somewhat disapprove	1844	34.8	34.8	60.2
	Strongly disapprove	2111	39.8	39.8	100.0
	Total	5304	100.0	100.0	

Perception of peer approval/disapproval: Taking cocaine regularly

		Frequency	Percent	Valid Percent	Cumulative Percent
Valid	No answer	58	1.1	1.1	1.1
	Strongly approve	32	.6	.6	1.7
	Somewhat approve	91	1.7	1.7	3.4
	Neither approve or disapprove	551	10.4	10.4	13.8
	Somewhat disapprove	932	17.6	17.6	31.4
	Strongly disapprove	3640	68.6	68.6	100.0
	Total	5304	100.0	100.0	

Perception of peer approval/disapproval: Trying amphetamines once or twice

		Frequency	Percent	Valid Percent	Cumulative Percent
Valid	No answer	50	.9	.9	.9
	Strongly approve	401	7.6	7.6	8.5
	Somewhat approve	1080	20.4	20.4	28.9
	Neither approve or disapprove	1410	26.6	26.6	55.4
	Somewhat disapprove	1011	19.1	19.1	74.5
	Strongly disapprove	1352	25.5	25.5	100.0
	Total	5304	100.0	100.0	

Perception of peer approval/disapproval: Taking amphetamines regularly

		Frequency	Percent	Valid Percent	Cumulative Percent
Valid	No answer	78	1.5	1.5	1.5
	Strongly approve	115	2.2	2.2	3.6
	Somewhat approve	507	9.6	9.6	13.2
	Neither approve or disapprove	1049	19.8	19.8	33.0
	Somewhat disapprove	1298	24.5	24.5	57.4
	Strongly disapprove	2257	42.6	42.6	100.0
	Total	5304	100.0	100.0	

Perception of peer approval/disapproval: Taking one or two alcoholic drinks nearly every day

		Frequency	Percent	Valid Percent	Cumulative Percent
Valid	No answer	51	1.0	1.0	1.0
	Strongly approve	530	10.0	10.0	11.0
	Somewhat approve	1226	23.1	23.1	34.1
	Neither approve or disapprove	1614	30.4	30.4	64.5
	Somewhat disapprove	1201	22.6	22.6	87.1
	Strongly disapprove	682	12.9	12.9	100.0
	Total	5304	100.0	100.0	

Perception of peer approval/disapproval: Taking three or four alcoholic drinks nearly every day

		Frequency	Percent	Valid Percent	Cumulative Percent
Valid	No answer	49	.9	.9	.9
	Strongly approve	237	4.5	4.5	5.4
	Somewhat approve	666	12.6	12.6	17.9
	Neither approve or disapprove	1168	22.0	22.0	40.0
	Somewhat disapprove	1564	29.5	29.5	69.5
	Strongly disapprove	1620	30.5	30.5	100.0
	Total	5304	100.0	100.0	

Perception of peer approval/disapproval: Having five or more drinks in one sitting

		Frequency	Percent	Valid Percent	Cumulative Percent
Valid	No answer	50	.9	.9	.9
	Strongly approve	589	11.1	11.1	12.0
	Somewhat approve	1087	20.5	20.5	32.5
	Neither approve or disapprove	1410	26.6	26.6	59.1
	Somewhat disapprove	990	18.7	18.7	77.8
	Strongly disapprove	1178	22.2	22.2	100.0
	Total	5304	100.0	100.0	

Perception of peer approval/disapproval: Taking steroids for body building or improved athletic performance

		Frequency	Percent	Valid Percent	Cumulative Percent
Valid	No answer	52	1.0	1.0	1.0
	Strongly approve	86	1.6	1.6	2.6
	Somewhat approve	362	6.8	6.8	9.4
	Neither approve or disapprove	1205	22.7	22.7	32.1
	Somewhat disapprove	1505	28.4	28.4	60.5
	Strongly disapprove	2094	39.5	39.5	100.0
	Total	5304	100.0	100.0	

**Perceived number of alcoholic drinks consumed by the typical student
at the last party**

		Frequency	Percent	Valid Percent	Cumulative Percent
Valid	0	163	3.1	3.1	3.1
	1	49	.9	.9	4.0
	2	254	4.8	4.8	8.8
	3	656	12.4	12.4	21.2
	4	670	12.6	12.6	33.8
	5	1042	19.6	19.6	53.4
	6	731	13.8	13.8	67.2
	7	418	7.9	7.9	75.1
	8	422	8.0	8.0	83.1
	9	85	1.6	1.6	84.7
	10	453	8.5	8.5	93.2
	11	7	.1	.1	93.3
	12	96	1.8	1.8	95.1
	13	19	.4	.4	95.5
	14	8	.2	.2	95.6
	15	90	1.7	1.7	97.3
	16	5	.1	.1	97.4
	17	3	.1	.1	97.5
	18	2	.0	.0	97.5
	20	32	.6	.6	98.1
	22	2	.0	.0	98.2
	23	1	.0	.0	98.2
	24	1	.0	.0	98.2
	25	5	.1	.1	98.3
	30	14	.3	.3	98.6
	31	1	.0	.0	98.6
	35	3	.1	.1	98.6
	40	4	.1	.1	98.7
	45	3	.1	.1	98.8
	50	18	.3	.3	99.1
	53	1	.0	.0	99.1
	54	1	.0	.0	99.2
	55	1	.0	.0	99.2
	60	3	.1	.1	99.2

**Perceived number of alcoholic drinks consumed by the typical student
at the last party**

	Frequency	Percent	Valid Percent	Cumulative Percent
Valid 64	1	.0	.0	99.2
65	3	.1	.1	99.3
67	1	.0	.0	99.3
68	1	.0	.0	99.3
70	2	.0	.0	99.4
75	2	.0	.0	99.4
77	1	.0	.0	99.4
78	1	.0	.0	99.5
80	6	.1	.1	99.6
87	2	.0	.0	99.6
88	1	.0	.0	99.6
90	4	.1	.1	99.7
95	1	.0	.0	99.7
99	15	.3	.3	100.0
Total	5304	100.0	100.0	

Gambling: Played cards at home

	Frequency	Percent	Valid Percent	Cumulative Percent
Valid No answer	20	.4	.4	.4
Never	4362	82.2	82.2	82.6
1-2 times per year	505	9.5	9.5	92.1
3-6 times per year	273	5.1	5.1	97.3
Monthly	97	1.8	1.8	99.1
Weekly	40	.8	.8	99.9
3+ times per week	7	.1	.1	100.0
Total	5304	100.0	100.0	

Gambling: Gambled at a casino

		Frequency	Percent	Valid Percent	Cumulative Percent
Valid	No answer	30	.6	.6	.6
	Never	4482	84.5	84.5	85.1
	1-2 times per year	641	12.1	12.1	97.2
	3-6 times per year	133	2.5	2.5	99.7
	Monthly	12	.2	.2	99.9
	Weekly	3	.1	.1	99.9
	3+ times per week	3	.1	.1	100.0
	Total	5304	100.0	100.0	

Gambling: Gambled on-line

		Frequency	Percent	Valid Percent	Cumulative Percent
Valid	No answer	36	.7	.7	.7
	Never	5117	96.5	96.5	97.2
	1-2 times per year	64	1.2	1.2	98.4
	3-6 times per year	35	.7	.7	99.0
	Monthly	22	.4	.4	99.4
	Weekly	17	.3	.3	99.8
	3+ times per week	13	.2	.2	100.0
	Total	5304	100.0	100.0	

Gambling: Gambled at informal locations

		Frequency	Percent	Valid Percent	Cumulative Percent
Valid	No answer	34	.6	.6	.6
	Never	5188	97.8	97.8	98.5
	1-2 times per year	49	.9	.9	99.4
	3-6 times per year	18	.3	.3	99.7
	Monthly	7	.1	.1	99.8
	Weekly	6	.1	.1	100.0
	3+ times per week	2	.0	.0	100.0
	Total	5304	100.0	100.0	

Gambling: Bet on fantasy football/basketball

		Frequency	Percent	Valid Percent	Cumulative Percent
Valid	No answer	32	.6	.6	.6
	Never	4869	91.8	91.8	92.4
	1-2 times per year	282	5.3	5.3	97.7
	3-6 times per year	84	1.6	1.6	99.3
	Monthly	13	.2	.2	99.5
	Weekly	17	.3	.3	99.9
	3+ times per week	7	.1	.1	100.0
	Total	5304	100.0	100.0	

Gambling: Betting pools

		Frequency	Percent	Valid Percent	Cumulative Percent
Valid	No answer	42	.8	.8	.8
	Never	4623	87.2	87.2	88.0
	1-2 times per year	550	10.4	10.4	98.3
	3-6 times per year	70	1.3	1.3	99.6
	Monthly	8	.2	.2	99.8
	Weekly	8	.2	.2	99.9
	3+ times per week	3	.1	.1	100.0
	Total	5304	100.0	100.0	

Gambling: Lottery

		Frequency	Percent	Valid Percent	Cumulative Percent
Valid	No answer	32	.6	.6	.6
	Never	3580	67.5	67.5	68.1
	1-2 times per year	938	17.7	17.7	85.8
	3-6 times per year	497	9.4	9.4	95.2
	Monthly	157	3.0	3.0	98.1
	Weekly	88	1.7	1.7	99.8
	3+ times per week	12	.2	.2	100.0
	Total	5304	100.0	100.0	

Gambling: Placed bet with bookie

		Frequency	Percent	Valid Percent	Cumulative Percent
Valid	No answer	52	1.0	1.0	1.0
	Never	5190	97.9	97.9	98.8
	1-2 times per year	30	.6	.6	99.4
	3-6 times per year	13	.2	.2	99.6
	Monthly	6	.1	.1	99.8
	Weekly	7	.1	.1	99.9
	3+ times per week	6	.1	.1	100.0
	Total	5304	100.0	100.0	

Location where you gambled most frequently

		Frequency	Percent	Valid Percent	Cumulative Percent
Valid	No answer	160	3.0	3.0	3.0
	I did not gamble in the past year	3393	64.0	64.0	67.0
	I only gambled online or playing the lottery	536	10.1	10.1	77.1
	Apartment/House	384	7.2	7.2	84.3
	Residence hall	38	.7	.7	85.0
	Fraternity/Sorority	38	.7	.7	85.8
	Other campus housing	10	.2	.2	86.0
	Casino	561	10.6	10.6	96.5
	Other	184	3.5	3.5	100.0
	Total	5304	100.0	100.0	

Consequences of gambling: Academic problems

		Frequency	Percent	Valid Percent	Cumulative Percent
Valid	No answer	12	.5	.5	.5
	I do not gamble	949	38.3	38.3	38.8
	None	1506	60.8	60.8	99.7
	Occasionally	6	.2	.2	99.9
	Frequently	2	.1	.1	100.0
	Total	2475	100.0	100.0	

Consequences of gambling: Issues with legal system

		Frequency	Percent	Valid Percent	Cumulative Percent
Valid	No answer	20	.8	.8	.8
	I do not gamble	940	38.0	38.0	38.8
	None	1515	61.2	61.2	100.0
	Total	2475	100.0	100.0	

Consequences of gambling: Financial issues

		Frequency	Percent	Valid Percent	Cumulative Percent
Valid	No answer	29	1.2	1.2	1.2
	I do not gamble	934	37.7	37.7	38.9
	None	1473	59.5	59.5	98.4
	Occasionally	38	1.5	1.5	100.0
	Frequently	1	.0	.0	100.0
	Total	2475	100.0	100.0	

Consequences of gambling: Felt bad about gambling

		Frequency	Percent	Valid Percent	Cumulative Percent
Valid	No answer	28	1.1	1.1	1.1
	I do not gamble	934	37.7	37.7	38.9
	None	1404	56.7	56.7	95.6
	Occasionally	100	4.0	4.0	99.6
	Frequently	9	.4	.4	100.0
	Total	2475	100.0	100.0	

Consequences of gambling: Poor physical health

		Frequency	Percent	Valid Percent	Cumulative Percent
Valid	No answer	21	.8	.8	.8
	I do not gamble	938	37.9	37.9	38.7
	None	1506	60.8	60.8	99.6
	Occasionally	8	.3	.3	99.9
	Frequently	2	.1	.1	100.0
	Total	2475	100.0	100.0	

Consequences of gambling: Issues with friends and family

		Frequency	Percent	Valid Percent	Cumulative Percent
Valid	No answer	35	1.4	1.4	1.4
	I do not gamble	930	37.6	37.6	39.0
	None	1498	60.5	60.5	99.5
	Occasionally	10	.4	.4	99.9
	Frequently	2	.1	.1	100.0
	Total	2475	100.0	100.0	

Gender

		Frequency	Percent	Valid Percent	Cumulative Percent
Valid	Male	1919	36.2	36.2	36.2
	Female	3385	63.8	63.8	100.0
	Total	5304	100.0	100.0	

Ethnicity

		Frequency	Percent	Valid Percent	Cumulative Percent
Valid	No answer	61	1.2	1.2	1.2
	Hispanic	166	3.1	3.1	4.3
	Non-Hispanic	5077	95.7	95.7	100.0
	Total	5304	100.0	100.0	

Race

		Frequency	Percent	Valid Percent	Cumulative Percent
Valid	No answer	34	.6	.6	.6
	White	4582	86.4	86.4	87.0
	Black	208	3.9	3.9	91.0
	Asian	226	4.3	4.3	95.2
	Native American or Alaskan Native	16	.3	.3	95.5
	Hawaiian or Pacific Islander	8	.2	.2	95.7
	More than one race	149	2.8	2.8	98.5
	Other	81	1.5	1.5	100.0
	Total	5304	100.0	100.0	

Marital status

		Frequency	Percent	Valid Percent	Cumulative Percent
Valid	No answer	22	.4	.4	.4
	Single, never married	4342	81.9	81.9	82.3
	Single, living with partner	295	5.6	5.6	87.8
	Married	492	9.3	9.3	97.1
	Separated	28	.5	.5	97.6
	Divorced	117	2.2	2.2	99.8
	Widowed	8	.2	.2	100.0
	Total	5304	100.0	100.0	

Employment status

		Frequency	Percent	Valid Percent	Cumulative Percent
Valid	No answer	32	.6	.6	.6
	Full-time	443	8.4	8.4	9.0
	Part-time	2245	42.3	42.3	51.3
	No	2584	48.7	48.7	100.0
	Total	5304	100.0	100.0	

Student status

		Frequency	Percent	Valid Percent	Cumulative Percent
Valid	No answer	47	.9	.9	.9
	Full-time	4879	92.0	92.0	92.9
	Part-time	378	7.1	7.1	100.0
	Total	5304	100.0	100.0	

Classification

		Frequency	Percent	Valid Percent	Cumulative Percent
Valid	No answer	19	.4	.4	.4
	Freshman or first year	1342	25.3	25.3	25.7
	Sophomore or second year	1381	26.0	26.0	51.7
	Junior	1192	22.5	22.5	74.2
	Senior	1179	22.2	22.2	96.4
	Grad or professional	150	2.8	2.8	99.2
	Not seeking a degree	15	.3	.3	99.5
	Other	26	.5	.5	100.0
	Total	5304	100.0	100.0	

Location of current residence

		Frequency	Percent	Valid Percent	Cumulative Percent
Valid	No answer	35	.7	.7	.7
	On-campus	2391	45.1	45.1	45.7
	Off-campus	2878	54.3	54.3	100.0
	Total	5304	100.0	100.0	

Housing type

		Frequency	Percent	Valid Percent	Cumulative Percent
Valid	No answer	32	.6	.6	.6
	House or apartment	2982	56.2	56.2	56.8
	Residence hall	1673	31.5	31.5	88.4
	Fraternity or sorority	388	7.3	7.3	95.7
	Other campus housing	135	2.5	2.5	98.2
	Other	94	1.8	1.8	100.0
	Total	5304	100.0	100.0	

With whom do you live: Alone

		Frequency	Percent	Valid Percent	Cumulative Percent
Valid	No answer	4623	87.2	87.2	87.2
	Yes	681	12.8	12.8	100.0
	Total	5304	100.0	100.0	

With whom do you live: With roomates

		Frequency	Percent	Valid Percent	Cumulative Percent
Valid	No answer	1972	37.2	37.2	37.2
	Yes	3332	62.8	62.8	100.0
	Total	5304	100.0	100.0	

With whom do you live: With parents

		Frequency	Percent	Valid Percent	Cumulative Percent
Valid	No answer	4736	89.3	89.3	89.3
	Yes	568	10.7	10.7	100.0
	Total	5304	100.0	100.0	

With whom do you live: With spouse

		Frequency	Percent	Valid Percent	Cumulative Percent
Valid	No answer	4727	89.1	89.1	89.1
	Yes	577	10.9	10.9	100.0
	Total	5304	100.0	100.0	

With whom do you live: With children

		Frequency	Percent	Valid Percent	Cumulative Percent
Valid	No answer	4809	90.7	90.7	90.7
	Yes	495	9.3	9.3	100.0
	Total	5304	100.0	100.0	

With whom do you live: Other

		Frequency	Percent	Valid Percent	Cumulative Percent
Valid	No answer	5108	96.3	96.3	96.3
	Yes	196	3.7	3.7	100.0
	Total	5304	100.0	100.0	

1. Did you use any of the following substances **in the last 12 months**? (Mark No or Yes for each line.)

	No	Yes
a. Cigarettes	N	Y
b. Cigars	N	Y
c. Chewing/smokeless tobacco	N	Y
d. Smoking tobacco with hookah/water pipe	N	Y
e. Alcohol (beer, wine, liquor)	N	Y
f. Marijuana (pot, hashish, hash oil)	N	Y
g. Cocaine (crack, rock, freebase)	N	Y
h. Hallucinogens (LSD, PCP, ecstasy)	N	Y
i. Heroin	N	Y
j. Inhalants (glue, solvents, gas)	N	Y
k. Prescription pills that are not prescribed to you	N	Y
l. Medications prescribed to you, but you used to get high	N	Y
m. Over-the-counter medications to get high	N	Y
n. Methamphetamine	N	Y
o. Other illegal drugs	N	Y

2. If you answered YES to using any of the substances above, how many days did you use it **in the past month**? (Mark one for each line.)

	Number of Days						
	0	1-2	3-5	6-9	10-19	20-29	All 30
a. Cigarettes	A	B	C	D	E	F	G
b. Cigars	A	B	C	D	E	F	G
c. Chewing/smokeless tobacco	A	B	C	D	E	F	G
d. Smoking tobacco with hookah/water pipe	A	B	C	D	E	F	G
e. Alcohol (beer, wine, liquor)	A	B	C	D	E	F	G
f. Marijuana (pot, hashish, hash oil)	A	B	C	D	E	F	G
g. Cocaine (crack, rock, freebase)	A	B	C	D	E	F	G
h. Hallucinogens (LSD, PCP, ecstasy)	A	B	C	D	E	F	G
i. Heroin	A	B	C	D	E	F	G
j. Inhalants (glue, solvents, gas)	A	B	C	D	E	F	G
k. Prescription pills that are not prescribed to you	A	B	C	D	E	F	G
l. Medications prescribed to you, but you used to get high	A	B	C	D	E	F	G
m. Over-the-counter medications to get high	A	B	C	D	E	F	G
n. Methamphetamine	A	B	C	D	E	F	G
o. Other illegal drugs	A	B	C	D	E	F	G

3. How old were you when you **first used**... (Mark one for each line.)

	Did not use	Under 10	10-11	12-13	14-15	16-17	18-20	21-25	26+
a. Cigarettes	A	B	C	D	E	F	G	H	I
b. Cigars	A	B	C	D	E	F	G	H	I
c. Chewing/smokeless tobacco	A	B	C	D	E	F	G	H	I
d. Smoked tobacco with hookah/water pipe	A	B	C	D	E	F	G	H	I
e. Alcohol (beer, wine, liquor)	A	B	C	D	E	F	G	H	I
f. Marijuana (pot, hashish, hash oil)	A	B	C	D	E	F	G	H	I
g. Cocaine (crack, rock, freebase)	A	B	C	D	E	F	G	H	I
h. Hallucinogens (LSD, PCP, ecstasy)	A	B	C	D	E	F	G	H	I
i. Heroin	A	B	C	D	E	F	G	H	I
j. Inhalants (glue, solvents, gas)	A	B	C	D	E	F	G	H	I
k. Prescription pills that are not prescribed to you	A	B	C	D	E	F	G	H	I
l. Medications prescribed to you, but you used to get high	A	B	C	D	E	F	G	H	I
m. Over-the-counter medications to get high	A	B	C	D	E	F	G	H	I
n. Methamphetamine	A	B	C	D	E	F	G	H	I
o. Other illegal drugs	A	B	C	D	E	F	G	H	I

4. **In the last 6 months**, how many times have you used the following drugs *without* a prescription? (Mark one for each line.)

	Did not use	Once	Every other month	Once/month	Once/week	3 times/week	5 times/week	Every day
a. Adderall	A	B	C	D	E	F	G	H
b. Ritalin	A	B	C	D	E	F	G	H
c. Xanax	A	B	C	D	E	F	G	H
d. Codeine	A	B	C	D	E	F	G	H
e. Vicodin	A	B	C	D	E	F	G	H
f. Lortab	A	B	C	D	E	F	G	H
g. Percocet	A	B	C	D	E	F	G	H
h. Oxycontin	A	B	C	D	E	F	G	H
i. Morphine	A	B	C	D	E	F	G	H
j. Methadone	A	B	C	D	E	F	G	H
k. Steroids	A	B	C	D	E	F	G	H

5. Did you drink alcohol in the last **6 months**?

- A. Yes (Go to question #6)
- B. No (Go to Question #13)

6. Did you drink alcoholic beverages for any of the following reasons in the last 6 months? (Mark one for each line.)

	Yes	No	Unsure
a. To experiment (to see what it's like)	Y	N	U
b. Because I am "hooked" (I feel I have to drink)	Y	N	U
c. To relax or relieve tension	Y	N	U
d. To feel good or get high	Y	N	U
e. To seek deeper insights and understanding	Y	N	U
f. To have a good time with my friends	Y	N	U
g. To fit in with a group I like	Y	N	U
h. Because of boredom, nothing else to do	Y	N	U
i. Because of anger or frustration	Y	N	U
j. To get through the day	Y	N	U
k. To increase the effects of some other drug(s)	Y	N	U
l. To decrease (offset) the effects of some other drug(s)	Y	N	U
m. To get to sleep	Y	N	U
n. Because it tastes good	Y	N	U
o. To get away from my problems or troubles	Y	N	U

7. Have you combined alcohol with energy drinks (e.g., Red Bull, Monster) in the past 6 months?

- Y
- N

8. Have you combined alcohol with stimulants (e.g., Adderall, Ritalin) in the past 6 months?

- Y
- N

9. Please indicate if you have experienced the following due to your drinking in the last 6 months.
(Mark one for each line.)

	Number of Times					
	Never	Once	Twice	3-5 times	6-9 times	10+ times
a. Had friends or family members worry or complain about your drinking	A	B	C	D	E	F
b. Had a hangover	A	B	C	D	E	F
c. Felt bad or guilty about your drinking	A	B	C	D	E	F
d. Been unable to stop drinking when you wanted to	A	B	C	D	E	F
e. Created problems between you and your friends or family members	A	B	C	D	E	F
f. Gotten into trouble at work or school because of drinking	A	B	C	D	E	F
g. Gone to anyone for help to reduce your drinking	A	B	C	D	E	F
h. Been hurt or injured because of drinking	A	B	C	D	E	F
i. Been ticketed or arrested because of your drinking	A	B	C	D	E	F
j. Been arrested for drunk driving	A	B	C	D	E	F
k. Driven a car while under the influence	A	B	C	D	E	F
l. Gotten into physical fights when drinking	A	B	C	D	E	F
m. Experienced unwanted sexual attention such as being touched when you don't want to be, forced kissing, etc.	A	B	C	D	E	F
n. Engaged in risky sexual behavior such as having unprotected sex or sex with someone you just met because you were drinking	A	B	C	D	E	F
o. Missed class or assignments	A	B	C	D	E	F
p. Forgot where you were or what you did (blacked out)	A	B	C	D	E	F
q. Seriously thought about suicide	A	B	C	D	E	F
r. Seriously tried to commit suicide	A	B	C	D	E	F

10. If you drank alcohol in the past month, what type of alcohol did you usually drink? (Mark one only)
- I did not drink alcohol during the past month
 - Beer
 - Malt beverages, such as Smirnoff Ice, Bacardi Silver, Hard Lemonade
 - Wine
 - Liquor, such as vodka, rum, whiskey
 - High alcohol drinks, such as Everclear, Bacardi 151, 99 bananas
 - Some other type

**Use this definition for the following two questions.
One drink is a 12-ounce bottle of beer, a 5-ounce glass of wine, or
one shot of liquor straight or in a mixed drink.**

11. During the **past 30 days**, on how many **days** did you drink 5 or more alcoholic drinks (for males) or 4 or more alcoholic drinks (for females) in 2-3 hours or less? (If zero, enter 00. If less than 10, enter 01, 02, 03, etc.)

--	--

12. Think back over the **last two weeks**. How many **times** have you had 5 or more alcoholic drinks (for males) or 4 or more alcoholic drinks (for females) in 2-3 hours or less? (If zero, enter 00. If less than 10, enter 01, 02, 03, etc.)

--	--

13. Are you 21 years or older?
- a. No, I am under 21 years old
 - b. Yes

***** IF YOU ARE 21 OR OLDER, SKIP TO QUESTION #18**

14. IF YOU ARE UNDER 21 and drink alcohol, what are the **three easiest ways** for you to get alcohol?

- A. older friends
- B. older siblings
- C. on-campus parties
- D. fraternity or sorority houses
- E. off-campus private parties (apartments, houses)
- F. someone else on-campus gives it to you
- G. buying it yourself
- H. stealing it from store
- I. from parents without their knowledge
- J. from parents with their knowledge

First easiest: _____ **Second easiest:** _____ **Third easiest:** _____

(Please place your choice on the response sheet)

15. IF YOU ARE UNDER 21, have you bought alcohol yourself in the past **6 months**?

- A. Yes
- B. No

***** IF YOU ANSWERED "NO", SKIP TO QUESTION #18**

16. IF YOU ARE UNDER 21 and have bought alcohol yourself, which is the most common method?
(Mark one.)

- A. Used a fake ID to buy alcohol
- B. Used someone else's ID to buy alcohol
- C. Bought alcohol without using an ID

17. IF YOU ARE UNDER 21 and have bought alcohol yourself, where are you most easily able to purchase alcohol? (Mark one.)

- A. Bar
- B. Restaurant
- C. Grocery store (e.g., Kroger, Marsh)
- D. Discount store (e.g., Wal-Mart, Target)
- E. Convenience store (e.g., Village Pantry, Circle K)
- F. Drug store (e.g., CVS)
- G. Liquor store
- H. Internet
- I. Winery/microbrewery

18. Did you use other drugs (e.g., cigarettes, illegal drugs, medications) in the past **6 months**?

- A. Yes (go to question #19)
- B. No (go to question #20)

19. Indicate if you have experienced the following due to your use of drugs **in the past 6 months**. (Mark one for each line.)

	Number of Times					
	Never	Once	Twice	3-5	6-9	10 or more
a. Abused more than one drug at a time	A	B	C	D	E	F
b. Been unable to stop using drugs when you wanted to	A	B	C	D	E	F
c. Had blackouts or flashbacks as a result of drug use	A	B	C	D	E	F
d. Felt bad or guilty about your drug use	A	B	C	D	E	F
e. Had friends or family members worry or complain about your drug use	A	B	C	D	E	F
f. Created problems between you and your friends or family members	A	B	C	D	E	F
g. Engaged in illegal activities in order to obtain drugs	A	B	C	D	E	F
h. Gotten into physical fights because you were using drugs	A	B	C	D	E	F
i. Experienced withdrawal symptoms (felt sick) when you stopped taking drugs	A	B	C	D	E	F
j. Had medical problems as a result of your drug use (e.g. memory loss, infections, convulsions, bleeding)	A	B	C	D	E	F
k. Driven a car while under the influence of drugs	A	B	C	D	E	F
l. Gotten in trouble at work or school because of your drug use	A	B	C	D	E	F
m. Been in vulnerable situations (e.g., could have been hurt and/or date raped when using drugs)	A	B	C	D	E	F
n. Engaged in risky sexual behavior such as having unprotected sex or sex with someone you just met because you were using drugs	A	B	C	D	E	F
o. Failed a class because of drug use	A	B	C	D	E	F
p. Missed class or assignments due to drug use	A	B	C	D	E	F

20. How do you think other students on campus feel (or would feel) about... (Mark one for each line.)

	Strongly approve	Somewhat approve	Neither approve or disapprove	Somewhat disapprove	Strongly disapprove
a. Trying marijuana once or twice	A	B	C	D	E
b. Smoking marijuana occasionally	A	B	C	D	E
c. Smoking marijuana regularly	A	B	C	D	E
d. Trying cocaine once or twice	A	B	C	D	E
e. Taking cocaine regularly	A	B	C	D	E
f. Trying amphetamines (e.g., Adderall, Ritalin) once or twice	A	B	C	D	E
g. Taking amphetamines regularly	A	B	C	D	E
h. Having one or two alcoholic drinks nearly every day	A	B	C	D	E
i. Having three or four alcoholic drinks nearly every day	A	B	C	D	E
j. Having five or more alcoholic drinks in one sitting	A	B	C	D	E
k. Taking steroids for body building or improved athletic performance	A	B	C	D	E

**Use this definition for the next question.
One drink is a 12-ounce bottle of beer, a 5-ounce glass of wine, or
one shot of liquor straight or in a mixed drink.**

21. How many alcoholic drinks do you think the typical student at your school had the last time he/she “partied/socialized”? (If you think the typical student at your school does not drink alcohol, enter 00. If less than 10, enter 01, 02, 03, etc.)

--	--

22. In the past year, how often have you done the following for *money*?

	Number of Times					
	Never	1-2 times/year	3-6 times/year	Monthly	Weekly	3 or more times/week
a. Played cards at home	A	B	C	D	E	F
b. Gambled at a casino	A	B	C	D	E	F
c. Gambled on-line	A	B	C	D	E	F
d. Gambled at informal locations (e.g., street corners, gambling houses)	A	B	C	D	E	F
e. Bet on fantasy football/basketball	A	B	C	D	E	F
f. Betting pools (e.g., March Madness)	A	B	C	D	E	F
g. Lottery	A	B	C	D	E	F
h. Placed bet with bookie	A	B	C	D	E	F

23. In the past year, if you gambled in ways other than online or playing the lottery, **where** did you most frequently gamble?

- A. I did not gamble in the past year
- B. I only gambled online or playing the lottery
- C. Apartment or house
- D. Residence hall
- E. Fraternity or sorority
- F. Other campus housing
- G. Casino
- H. Other

24. What consequences have you experienced due to your gambling?

	I do not gamble	None	Occasionally	Frequently
a. Academic problems (missed class, did poorly on exam, lower grades)	A	B	C	D
b. Issues with legal system	A	B	C	D
c. Financial issues	A	B	C	D
d. Felt bad about gambling	A	B	C	D
e. Poor physical health (sleep issues, depression, poor nutrition, poor hygiene)	A	B	C	D
f. Issues with friends and family (lied, strained relationships, arguments)	A	B	C	D

25. Gender:

- M. Male
- F. Female

26. Ethnicity:

- A. Hispanic
- B. Non-Hispanic

27. Race: (Mark one only.)

- A. White
- B. Black/African American
- C. Asian
- D. Native American/Alaskan
Native
- E. Hawaiian/Pacific Islander
- F. More than one race
- G. Other

28. Marital status:

- A. Single, never married
- B. Single, living with partner
- C. Married
- D. Separated
- E. Divorced
- F. Widowed

29. Are you employed?

- A. Yes, full-time
- B. Yes, part-time
- C. No

30. Student status:

- A. Full-time
- B. Part-time

31. Classification:

- A. Freshman/First year
- B. Sophomore/Second year
- C. Junior
- D. Senior
- E. Grad/professional
- F. Not seeking a degree
- G. Other

32. Current residence as a student:

- A. On-campus
- B. Off-campus

33. Where do you live?

- A. House/apartment/etc.
- B. Residence hall
- C. Fraternity or sorority
- D. Other campus housing
- E. Other

34. With whom do you live? (Mark all that apply)

- A. Alone
- B. With roommate(s)
- C. With parent(s)
- D. With spouse
- E. With children
- F. Other

Results of the Indiana College Substance Use Survey 2011

by
Rosemary King, M.P.H.
Mi Kyung Jun, Ph.D.
Junghun Lee, M.S.

Funded by the Indiana Family and Social Services Administration, Division of Mental Health and Addiction through a contract with the Indiana Collegiate Action Network

Contact:
Indiana Prevention Resource Center
501 North Morton Street Suite 110
Bloomington, IN 47404
<http://www.drugs.indiana.edu>
drugprc@indiana.edu
Toll Free: 1-800-346-3077
Fax: 812-855-4940

